

GPS SURVEY MARK DESCRIPTION

GIS MAPPING BY:
 THE SIDWELL COMPANY
 WEST CHICAGO, ILLINOIS

THE OFFICE OF THE
 COUNTY ENGINEER
 DICKINSON COUNTY, IOWA

DESIGNATION 993604 1 GPS NO. 8033 COUNTY DICKINSON STATE IOWA
 LOCATED IN SECTION 4 TWP 99 N RANGE 36 W USGS QUAD MAP SPIRIT LAKE
 TO REACH THE STATION FROM _____
 THE INTERSECTION OF HIGHWAY 9 AND 250TH AVENUE. HEAD SOUTH ON HIGHWAY 9 APPROXIMATELY 275 FEET TO THE
 STATION ON THE LEFT.

MARK

BERNTSEN MONUMENT WITH 2-1/2" ALUMINUM DISK ON ROD WITH 6" ACCESS COVER

MARK EXISTING VALUES AS PUBLISHED BY
 MARK SET VALUES ESTABLISHED BY

Patrick Engineering Inc. DATE August, 2002

HORIZONTAL VALUES ORIGINATED ON ORDER "B" IOWA HIGH ACCURACY REFERENCE NETWORK (HARN) CONTROL
 ESTABLISHED BY THE NATIONAL GEODETIC SURVEY AND BASED ON THE NORTH AMERICAN DATUM OF 1983, 1996
 ADJUSTMENT.

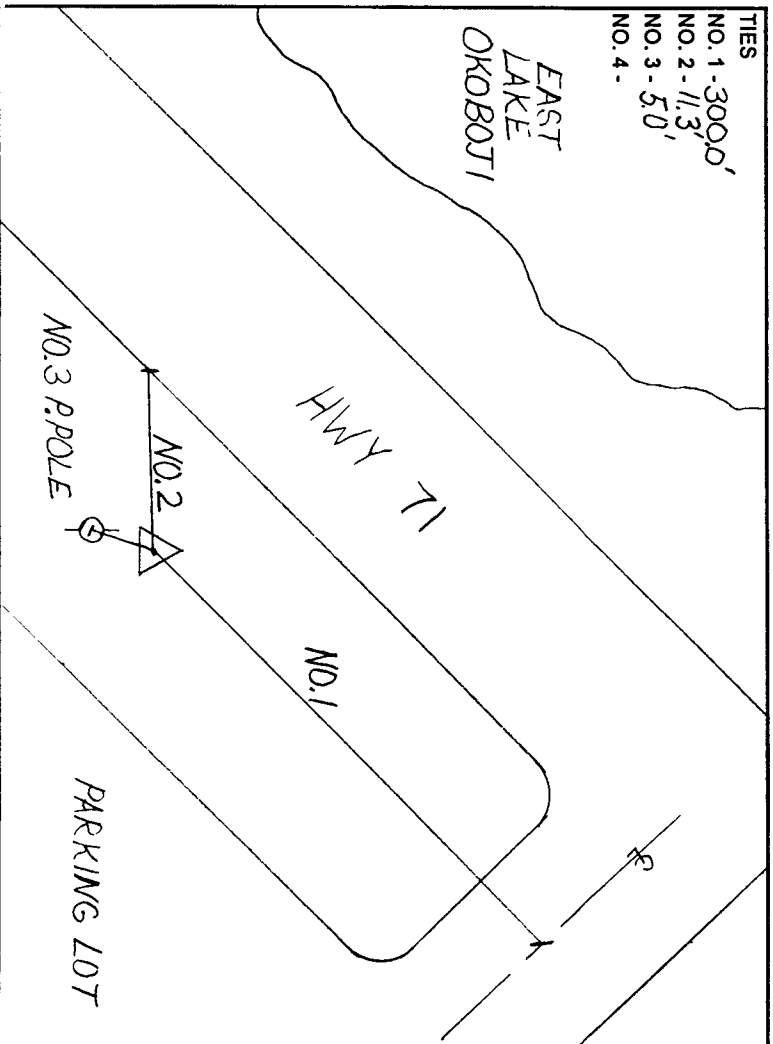
LATITUDE NORTH 43° 25' 32.030142"
 LONGITUDE WEST 95° 05' 34.927823"
 ELLIPSOID HEIGHT (meter) 399.187 * (Based on GEOID99 Model)

IOWA COORDINATE SYSTEM, NORTH ZONE

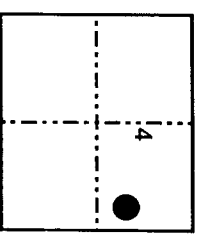
COORDINATES (US FEET)	CONVERGENCE ANGLE
NORTHING (Y) <u>3986577.09</u>	<u>-1° 04' 46.82"</u>
EASTING (X) <u>4498041.53</u>	SCALE FACTOR <u>0.999970</u>
	COORDINATES (METERS)
	NORTHING (Y) <u>1215111.127</u>
	EASTING (X) <u>1371005.800</u>

VERTICAL VALUES ORIGINATED ON VERTICAL CONTROL ESTABLISHED BY THE NATIONAL GEODETIC SURVEY AND/OR THE
 U.S. GEOLOGICAL SURVEY AND BASED ON THE NORTH AMERICAN VERTICAL DATUM OF 1988.

ELEVATION (US FEET)	<u>1401.20</u>	ELEVATION (METERS)	<u>427.087</u>
---------------------	----------------	--------------------	----------------



TIES
 NO. 1 - 3000.0'
 NO. 2 - 11.3'
 NO. 3 - 50'
 NO. 4 -



SECTION MAP



SKETCH
 BY CCS
 PATRICK 09-2002