

**GPS SURVEY MARK DESCRIPTION**

**GIS MAPPING BY:**  
 THE SIDWELL COMPANY  
 WEST CHICAGO, ILLINOIS

THE OFFICE OF THE  
 COUNTY ENGINEER  
 DICKINSON COUNTY, IOWA

**DESIGNATION** 993634 3 **GPS NO.** 8035 **COUNTY** DICKINSON **STATE** IOWA  
**LOCATED IN SECTION** 34 **TWP** 99 N **RANGE** 36 W **USGS QUAD MAP** SPIRIT LAKE SE  
**THE STATION IS**  
 AT THE NORTHEAST CORNER OF THE INTERSECTION BETWEEN 210TH STREET AND 250TH AVENUE.

**MARK**  MARK EXISTING  VALUES AS PUBLISHED BY BERTNSEN MONUMENT WITH 2-1/2" ALUMINUM DISK ON ROD WITH 6" ACCESS COVER  
 MARK SET  VALUES ESTABLISHED BY Patrick Engineering Inc. **DATE** August, 2002

**HORIZONTAL VALUES ORIGINATED ON ORDER "B" IOWA HIGH ACCURACY REFERENCE NETWORK (HARN) CONTROL ESTABLISHED BY THE NATIONAL GEODETIC SURVEY AND BASED ON THE NORTH AMERICAN DATUM OF 1983, 1996 ADJUSTMENT.**

**LATITUDE NORTH** 43° 20' 32.897897"  
**LONGITUDE WEST** 95° 05' 30.308435"  
**ELLIPSOID HEIGHT (meter)** 415.055 \* (Based on GEOID99 Model)

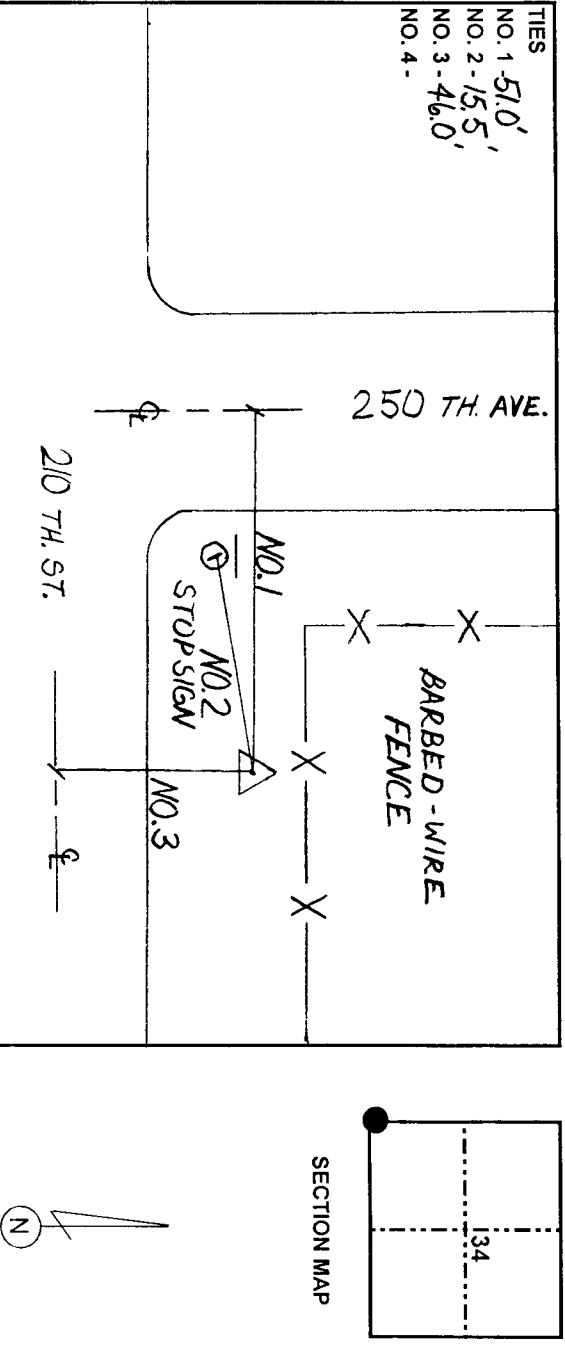
**IOWA COORDINATE SYSTEM, NORTH ZONE** **CONVERGENCE ANGLE** -1° 04' 43.69"  
**SCALE FACTOR** 0.999950

**COORDINATES (US FEET)** **COORDINATES (METERS)**  
**NORTHING (Y)** 3956288.07 **NORTHING (Y)** 1205879.015  
**EASTING (X)** 4497812.13 **EASTING (X)** 1370935.879

**VERTICAL VALUES ORIGINATED ON VERTICAL CONTROL ESTABLISHED BY THE NATIONAL GEODETIC SURVEY AND/OR THE U.S. GEOLOGICAL SURVEY AND BASED ON THE NORTH AMERICAN VERTICAL DATUM OF 1988.**

**ELEVATION (US FEET)** 1454.11 **ELEVATION (METERS)** 443.214

**TIES**  
 NO. 1 - 51.0'  
 NO. 2 - 15.5'  
 NO. 3 - 46.0'  
 NO. 4 -



SKETCH BY CCS  
 PATRICK 09-2002