

GPS SURVEY MARK DESCRIPTION

GIS MAPPING BY:
 THE SIDWELL COMPANY
 WEST CHICAGO, ILLINOIS

THE OFFICE OF THE
 COUNTY ENGINEER
 DICKINSON COUNTY, IOWA

DESIGNATION 1003519 3 GPS NO. 8038 COUNTY DICKINSON STATE IOWA
 LOCATED IN SECTION 19 TWP 100 N RANGE 35 W USGS QUAD MAP SPIRIT LAKE
 TO REACH THE STATION FROM _____
 THE INTERSECTION BETWEEN 280TH AVENUE AND 120TH (A15) STREET; HEAD SOUTH ON 280TH AVENUE FOR 0.5 MILE
 TO THE STATION ON THE LEFT.

MARK BERNTSEN MONUMENT WITH 2-1/2" ALUMINUM DISK ON ROD WITH 6" ACCESS COVER

MARK EXISTING VALUES AS PUBLISHED BY _____
 MARK SET VALUES ESTABLISHED BY Patrick Engineering Inc. DATE August, 2002

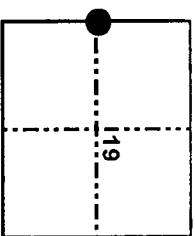
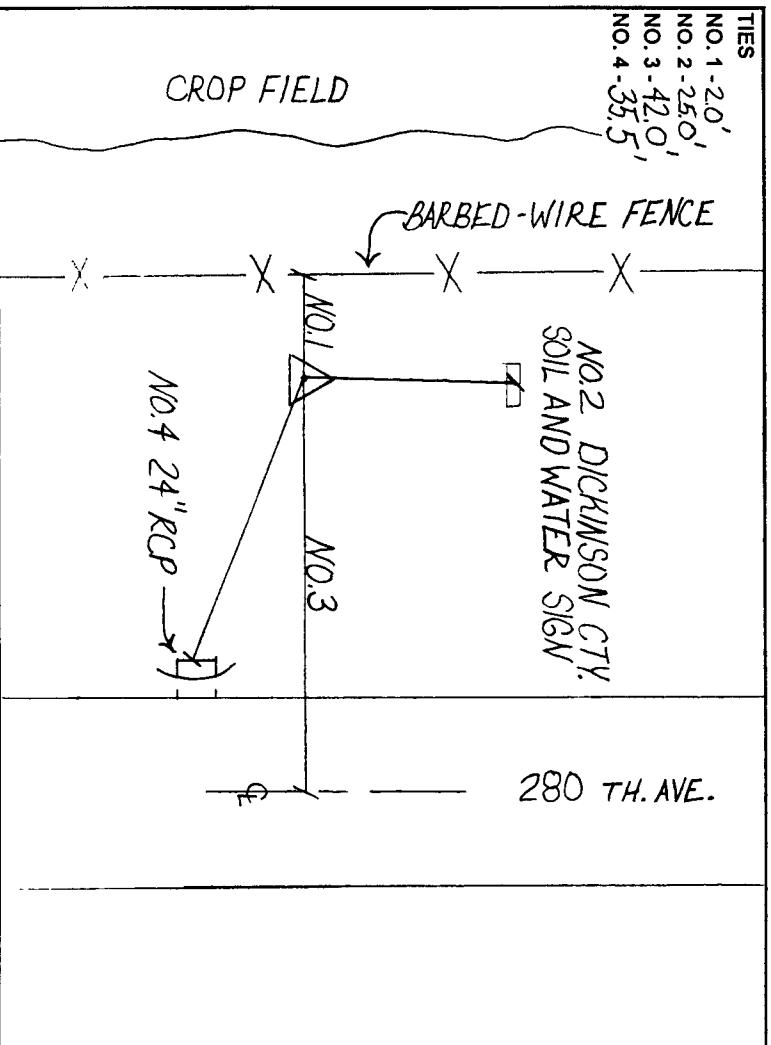
HORIZONTAL VALUES ORIGINATED ON ORDER "B" IOWA HIGH ACCURACY REFERENCE NETWORK (HARN) CONTROL ESTABLISHED BY THE NATIONAL GEODETIC SURVEY AND BASED ON THE NORTH AMERICAN DATUM OF 1983, 1996 ADJUSTMENT.

LATITUDE NORTH 43° 27' 59.808475"
 LONGITUDE WEST 95° 01' 57.342667"
 ELLIPSOID HEIGHT (meter) 414.336 * (Based on GEOID99 Model)

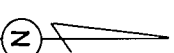
IOWA COORDINATE SYSTEM, NORTH ZONE
 CONVERGENCE ANGLE -1° 02' 19.35"
 SCALE FACTOR 0.999978
 COORDINATES (US FEET)
 NORTHING (Y) 4001241.13 COORDINATES (METERS)
 NORTHING (Y) 1219580.736
 EASTING (X) 4514367.67 EASTING (X) 1375982.018

VERTICAL VALUES ORIGINATED ON VERTICAL CONTROL ESTABLISHED BY THE NATIONAL GEODETIC SURVEY AND/OR THE U.S. GEOLOGICAL SURVEY AND BASED ON THE NORTH AMERICAN VERTICAL DATUM OF 1988.

ELEVATION (US FEET) 1450.80 ELEVATION (METERS) 442.205



SECTION MAP



SKETCH BY CCS

PATRICK 09-2002