

GPS SURVEY MARK DESCRIPTION

GIS MAPPING BY:  
THE SIDWELL COMPANY  
WEST CHICAGO, ILLINOIS

THE OFFICE OF THE  
COUNTY ENGINEER  
DICKINSON COUNTY, IOWA

DESIGNATION 993613 2 GPS NO. 8040 COUNTY DICKINSON STATE IOWA  
LOCATED IN SECTION 13 TWP 99 N RANGE 36 W USGS QUAD MAP SPIRIT LAKE  
TO REACH THE STATION FROM \_\_\_\_\_  
THE INTERSECTION OF 280TH AVENUE AND 190TH STREET, HEAD NORTH ON 280TH AVENUE FOR 1.1 MILE TO  
THE STATION ON THE LEFT, LOCATED IN A GRAVEL PARKING AREA.

MARK

MARK EXISTING  VALUES AS PUBLISHED BY BERNTSEN MONUMENT WITH 2-1/2" ALUMINUM DISK ON ROD WITH 6" ACCESS COVER

MARK SET  VALUES ESTABLISHED BY Patrick Engineering Inc. DATE August 2002

HORIZONTAL VALUES ORIGINATED ON ORDER "B" IOWA HIGH ACCURACY REFERENCE NETWORK (HARN) CONTROL ESTABLISHED BY THE NATIONAL GEODETIC SURVEY AND BASED ON THE NORTH AMERICAN DATUM OF 1983, 1996 ADJUSTMENT.

LATITUDE NORTH 43° 23' 15.763360"  
LONGITUDE WEST 95° 01' 58.185343"  
ELLIPSOID HEIGHT (meter) 432.046 \* (Based on GEOID99 Model)

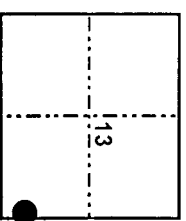
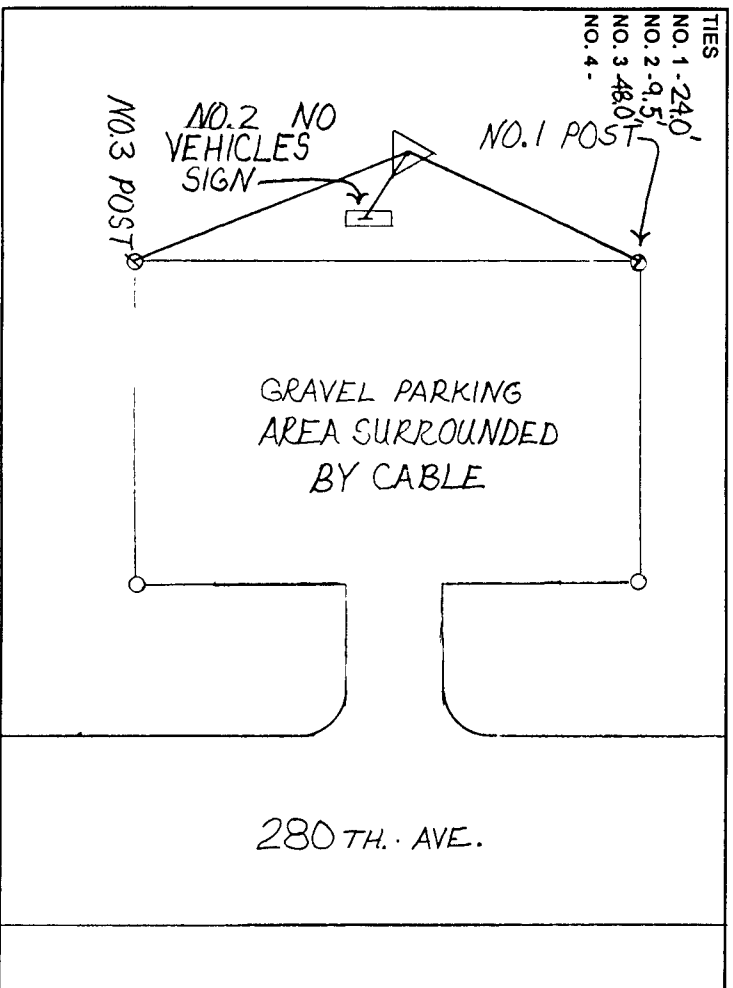
IOWA COORDINATE SYSTEM, NORTH ZONE

CONVERGENCE ANGLE -1° 02' 19.92"

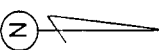
COORDINATES (US FEET)		SCALE FACTOR	<u>0.999957</u>
NORTHING (Y)	<u>3972486.14</u>	COORDINATES (METERS)	
EASTING (X)	<u>4513784.08</u>	NORTHING (Y)	<u>1210816.197</u>
		EASTING (X)	<u>1375804.139</u>

VERTICAL VALUES ORIGINATED ON VERTICAL CONTROL ESTABLISHED BY THE NATIONAL GEODETIC SURVEY AND/OR THE U.S. GEOLOGICAL SURVEY AND BASED ON THE NORTH AMERICAN VERTICAL DATUM OF 1988.

ELEVATION (US FEET) 1509.64 ELEVATION (METERS) 460.139



SECTION MAP



SKETCH BY CCS

PATRICK 09-2002