

GPS SURVEY MARK DESCRIPTION

GIS MAPPING BY:
 THE SIDWELL COMPANY
 WEST CHICAGO, ILLINOIS

THE OFFICE OF THE
 COUNTY ENGINEER
 DICKINSON COUNTY, IOWA

DEJURISDICTION 983506 4 GPS NO. 8041 COUNTY DICKINSON STATE IOWA
 LOCATED IN SECTION 6 TWP 98 N RANGE 35 W USGS QUAD MAP SPRIT LAKE SE
 THE STATION IS
 AT THE SOUTHEAST CORNER OF THE INTERSECTION BETWEEN 280TH AVENUE AND 210TH STREET.

MARK MARK EXISTING VALUES AS PUBLISHED BY BERTNSEN MONUMENT WITH 2-1/2" ALUMINUM DISK ON ROD WITH 6" ACCESS COVER
 MARK SET VALUES ESTABLISHED BY Patrick Engineering Inc. DATE August, 2002

HORIZONTAL VALUES ORIGINATED ON ORDER "B" IOWA HIGH ACCURACY REFERENCE NETWORK (HARN) CONTROL ESTABLISHED BY THE NATIONAL GEODETIC SURVEY AND BASED ON THE NORTH AMERICAN DATUM OF 1983, 1996 ADJUSTMENT.

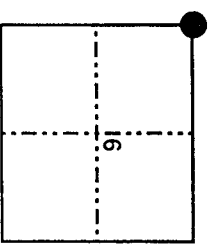
LATITUDE NORTH 43° 20' 31.455007"
 LONGITUDE WEST 95° 01' 56.901556"
 ELLIPSOID HEIGHT (meter) 418.290 * (Based on GEOID99 Model)

IOWA COORDINATE SYSTEM, NORTH ZONE
 CONVERGENCE ANGLE -1° 02' 19.05"
 SCALE FACTOR 0.999949
 COORDINATES (US FEET)
 NORTHING (Y) 3955850.61 COORDINATES (METERS) 1205745.677
 EASTING (X) 4513577.30 EASTING (X) 1375741.113

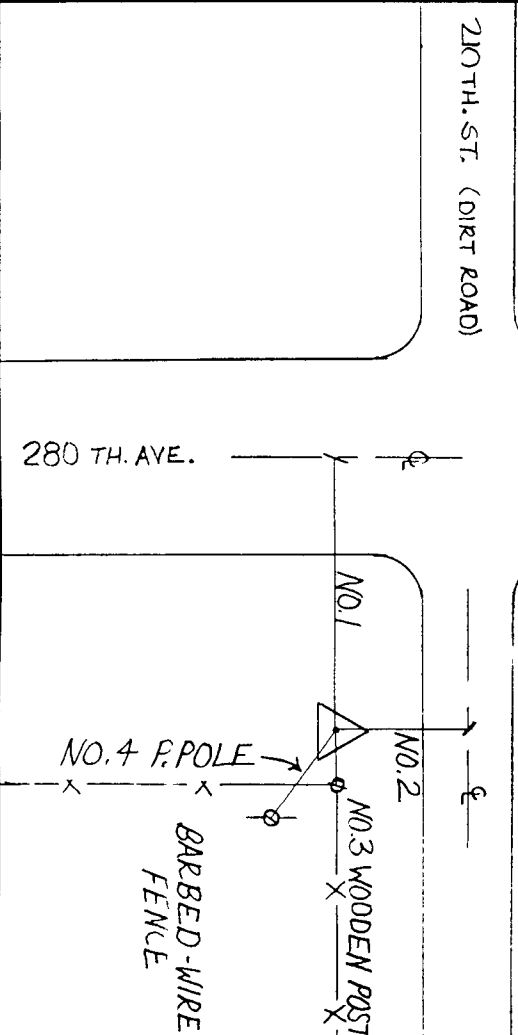
VERTICAL VALUES ORIGINATED ON VERTICAL CONTROL ESTABLISHED BY THE NATIONAL GEODETIC SURVEY AND/OR THE U.S. GEOLOGICAL SURVEY AND BASED ON THE NORTH AMERICAN VERTICAL DATUM OF 1988.

ELEVATION (US FEET) 1464.96 ELEVATION (METERS) 446.521

- TIES
 NO. 1 - 32.0'
 NO. 2 - 22.0'
 NO. 3 - 30'
 NO. 4 - 8.5'



SECTION MAP



SKETCH BY C.C.S.

PATRICK 09-2002