

GPS SURVEY MARK DESCRIPTION

GIS MAPPING BY:
 THE SIDWELL COMPANY
 WEST CHICAGO, ILLINOIS

THE OFFICE OF THE
 COUNTY ENGINEER
 DICKINSON COUNTY, IOWA

DESIGNATION 983613 2 GPS NO. 8042 COUNTY DICKINSON STATE IOWA
 LOCATED IN SECTION 13 TWP 98 N RANGE 36 W USGS QUAD MAP SPIRIT LAKE SE
 THE STATION IS _____
 AT THE NORTHWEST INTERSECTION OF 240TH STREET AND 280TH AVENUE

MARK _____
 MARK EXISTING VALUES AS PUBLISHED BY _____
 MARK SET VALUES ESTABLISHED BY Patrick Engineering Inc. DATE August, 2002

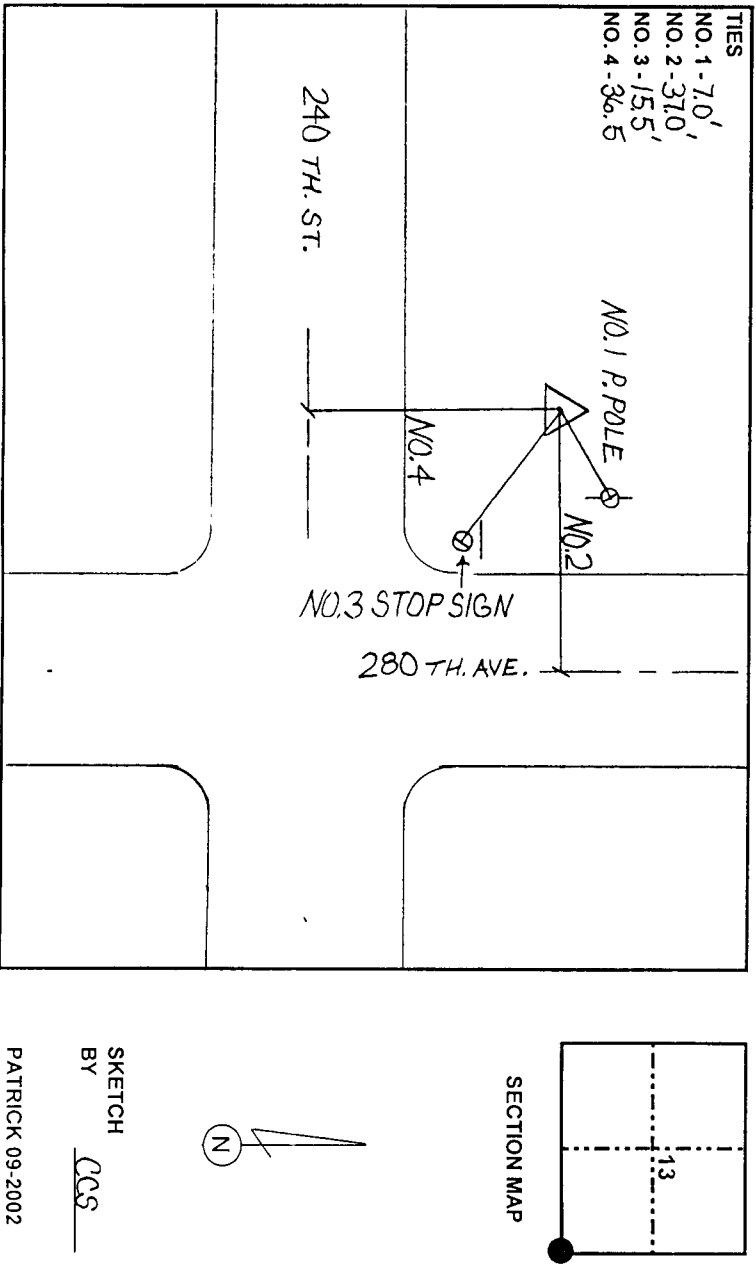
HORIZONTAL VALUES ORIGINATED ON ORDER "B" IOWA HIGH ACCURACY REFERENCE NETWORK (HARN) CONTROL ESTABLISHED BY THE NATIONAL GEODETIC SURVEY AND BASED ON THE NORTH AMERICAN DATUM OF 1983, 1996 ADJUSTMENT.

LATITUDE NORTH 43° 17' 55.613637"
 LONGITUDE WEST 95° 01' 58.799120"
 ELLIPSOID HEIGHT (meter) 413.017 * (Based on GEOID99 Model)

IOWA COORDINATE SYSTEM, NORTH ZONE
 CONVERGENCE ANGLE -1° 02' 20.34"
 SCALE FACTOR 0.999941
 COORDINATES (US FEET)
 NORTHING (Y) 3940076.76
 EASTING (X) 4513150.98
 COORDINATES (METERS)
 NORTHING (Y) 1200937.798
 EASTING (X) 1375611.170

VERTICAL VALUES ORIGINATED ON VERTICAL CONTROL ESTABLISHED BY THE NATIONAL GEODETIC SURVEY AND/OR THE U.S. GEOLOGICAL SURVEY AND BASED ON THE NORTH AMERICAN VERTICAL DATUM OF 1988.

ELEVATION (US FEET) 1448.05 ELEVATION (METERS) 441.367



SKETCH BY CCS
 PATRICK 09-2002