

**GPS SURVEY MARK DESCRIPTION**

GIS MAPPING BY:  
**THE SIDWELL COMPANY**  
 WEST CHICAGO, ILLINOIS

THE OFFICE OF THE  
 COUNTY ENGINEER  
 DICKINSON COUNTY, IOWA

DESIGNATION 993521 1 GPS NO. 8046 COUNTY DICKINSON STATE IOWA  
 LOCATED IN SECTION 21 TWP 99 N RANGE 35 W USGS QUAD MAP SUPERIOR  
 THE STATION IS  
 AT THE SOUTHWEST CORNER OF THE INTERSECTION BETWEEN 310TH AVENUE AND 180TH STREET

MARK BERNTSEN MONUMENT WITH 2-1/2" ALUMINUM DISK ON ROD WITH 6" ACCESS COVER  
 MARK EXISTING  VALUES AS PUBLISHED BY  
 MARK SET  VALUES ESTABLISHED BY Patrick Engineering Inc. DATE August, 2002

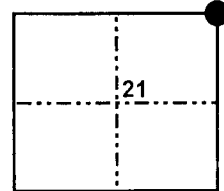
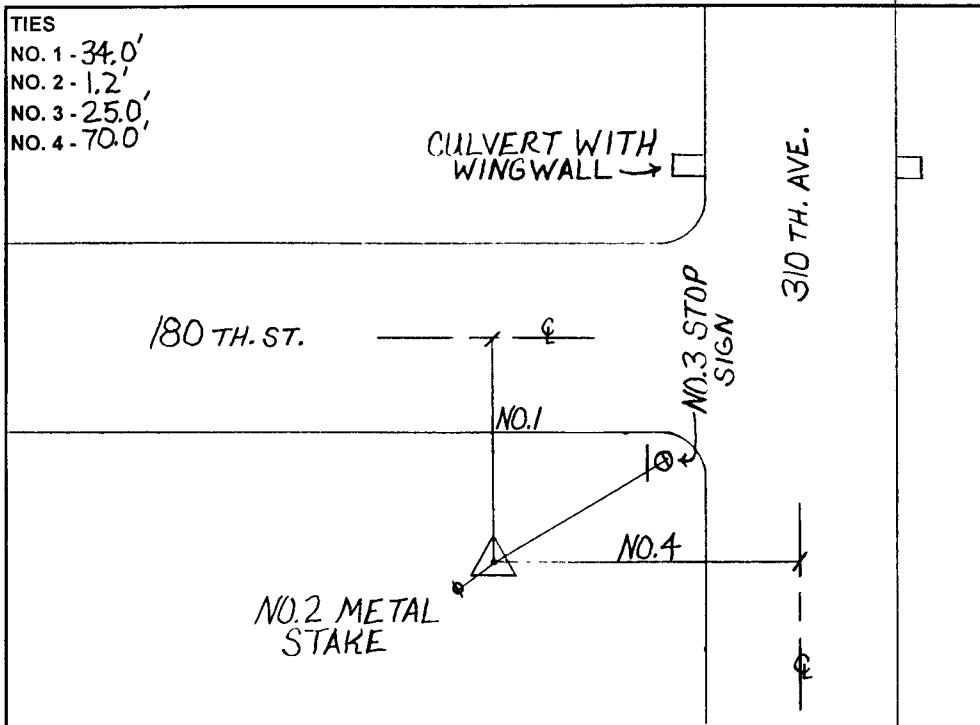
HORIZONTAL VALUES ORIGINATED ON ORDER "B" IOWA HIGH ACCURACY REFERENCE NETWORK (HARN) CONTROL ESTABLISHED BY THE NATIONAL GEODETIC SURVEY AND BASED ON THE NORTH AMERICAN DATUM OF 1983, 1996 ADJUSTMENT.

LATITUDE NORTH 43° 23' 06.313965"  
 LONGITUDE WEST 94° 58' 25.914595"  
 ELLIPSOID HEIGHT (meter) 415 221 \* (Based on GEOID99 Model)

IOWA COORDINATE SYSTEM, NORTH ZONE	CONVERGENCE ANGLE	<u>0° 59' 56 05"</u>
	SCALE FACTOR	<u>0 999959</u>
COORDINATES (US FEET)	COORDINATES (METERS)	
NORTHING (Y)	NORTHING (Y)	<u>1210439 656</u>
EASTING (X)	EASTING (X)	<u>1380576.064</u>

VERTICAL VALUES ORIGINATED ON VERTICAL CONTROL ESTABLISHED BY THE NATIONAL GEODETIC SURVEY AND/OR THE U.S. GEOLOGICAL SURVEY AND BASED ON THE NORTH AMERICAN VERTICAL DATUM OF 1988.

ELEVATION (US FEET) 1454.68 ELEVATION (METERS) 443.387



SECTION MAP



SKETCH BY CCS

PATRICK 09-2002