

GPS SURVEY MARK DESCRIPTION

GIS MAPPING BY:
THE SIDWELL COMPANY
WEST CHICAGO, ILLINOIS

THE OFFICE OF THE
COUNTY ENGINEER
DICKINSON COUNTY, IOWA

DESIGNATION 983503 4 GPS NO. 8047 COUNTY DICKINSON STATE IOWA
 LOCATED IN SECTION 3 TWP 98 N RANGE 35 W USGS QUAD MAP TERRIL
 THE STATION IS
 AT THE SOUTHEAST CORNER OF THE INTERSECTION BETWEEN 310TH AVENUE AND 210TH STREET.

MARK BERNTSEN MONUMENT WITH 2-1/2" ALUMINUM DISK ON ROD WITH 6" ACCESS COVER

MARK EXISTING VALUES AS PUBLISHED BY
 MARK SET VALUES ESTABLISHED BY Patrick Engineering Inc DATE August, 2002

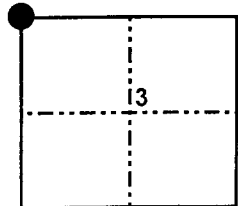
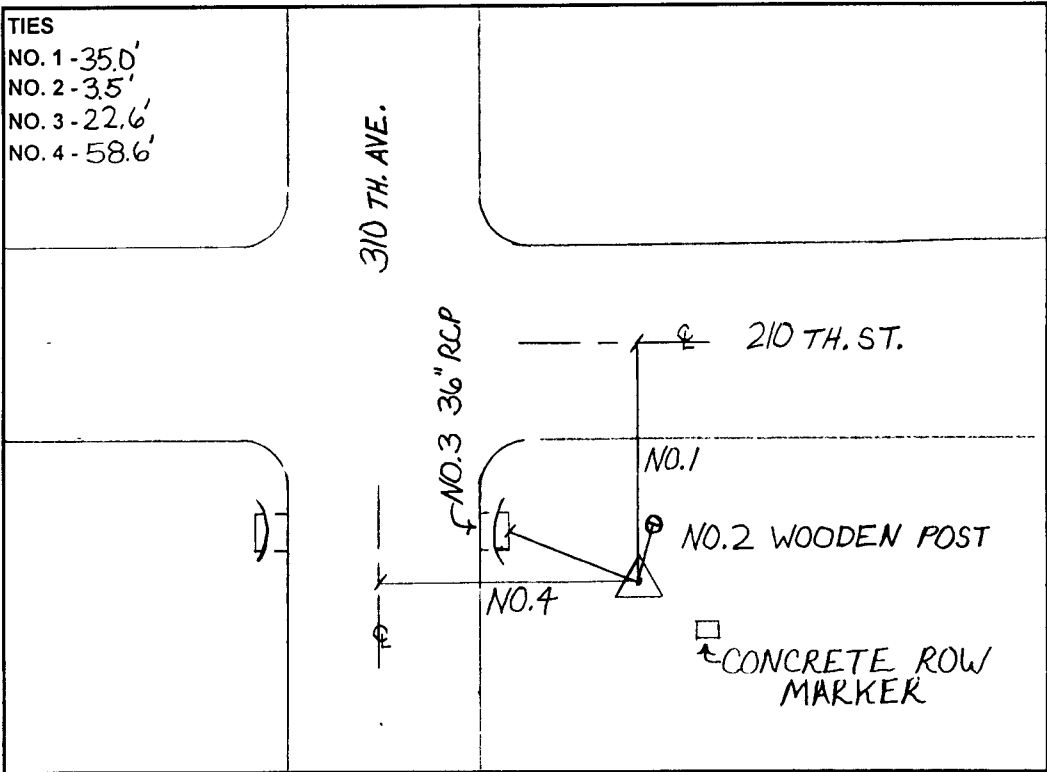
HORIZONTAL VALUES ORIGINATED ON ORDER "B" IOWA HIGH ACCURACY REFERENCE NETWORK (HARN) CONTROL ESTABLISHED BY THE NATIONAL GEODETIC SURVEY AND BASED ON THE NORTH AMERICAN DATUM OF 1983, 1996 ADJUSTMENT.

LATITUDE NORTH 43° 20' 31.136002"
 LONGITUDE WEST 94° 58' 23.603011"
 ELLIPSOID HEIGHT (meter) 405.953 * (Based on GEOID99 Model)

IOWA COORDINATE SYSTEM, NORTH ZONE	CONVERGENCE ANGLE <u>0° 59' 54.49"</u>
	SCALE FACTOR <u>0.999951</u>
COORDINATES (US FEET)	COORDINATES (METERS)
NORTHING (Y) <u>3955538.11</u>	NORTHING (Y) <u>1205650.427</u>
EASTING (X) <u>4529336.85</u>	EASTING (X) <u>1380544.633</u>

VERTICAL VALUES ORIGINATED ON VERTICAL CONTROL ESTABLISHED BY THE NATIONAL GEODETIC SURVEY AND/OR THE U.S. GEOLOGICAL SURVEY AND BASED ON THE NORTH AMERICAN VERTICAL DATUM OF 1988.

ELEVATION (US FEET) 1424.66 ELEVATION (METERS) 434.237



SECTION MAP



SKETCH BY CCS

PATRICK 09-2002