

GPS SURVEY MARK DESCRIPTION

GIS MAPPING BY:
THE SIDWELL COMPANY
WEST CHICAGO, ILLINOIS

THE OFFICE OF THE
COUNTY ENGINEER
DICKINSON COUNTY, IOWA

DESIGNATION 983501 1 GPS NO. 8053 COUNTY DICKINSON STATE IOWA
 LOCATED IN SECTION 1 TWP 98 N RANGE 35 W USGS QUAD MAP TERRIL
 TO REACH THE STATION FROM
THE INTERSECTION BETWEEN 210TH STREET AND 340TH AVENUE, HEAD WEST 0.25 MILE ON 210TH STREET
TO THE STATION ON THE RIGHT.

MARK BERNTSEN MONUMENT WITH 2-1/2" ALUMINUM DISK ON ROD WITH 6" ACCESS COVER

MARK EXISTING VALUES AS PUBLISHED BY
 MARK SET VALUES ESTABLISHED BY Patrick Engineering Inc DATE August, 2002

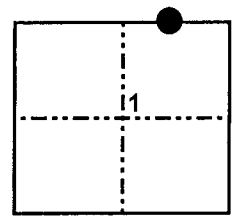
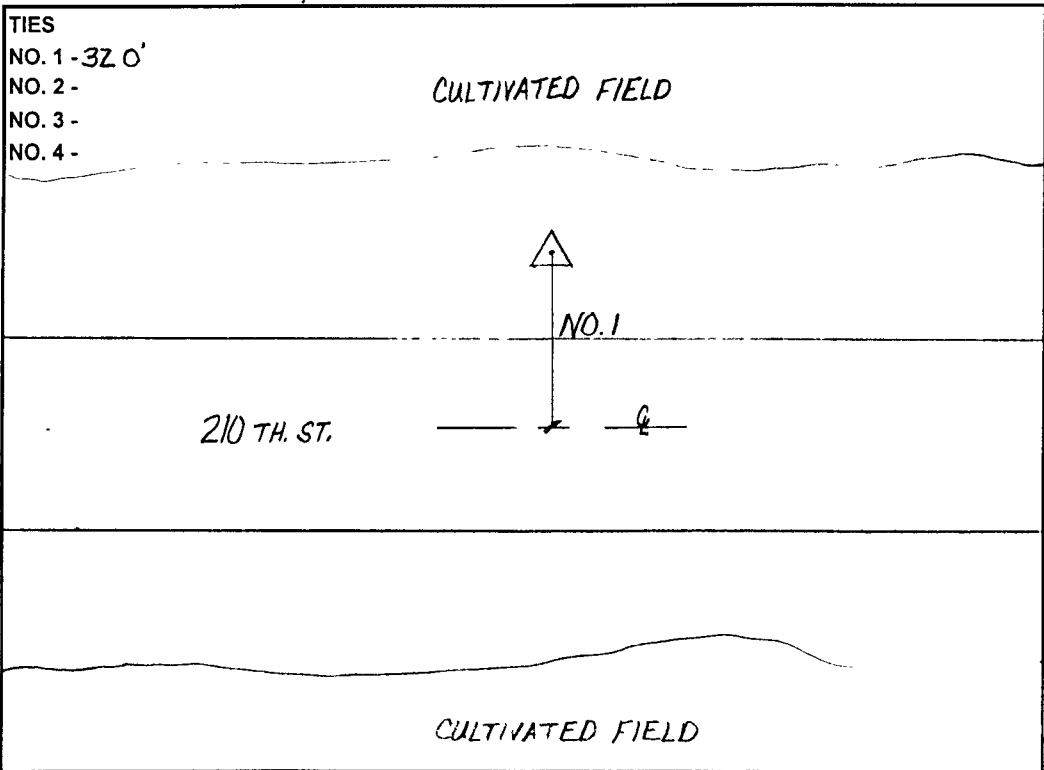
HORIZONTAL VALUES ORIGINATED ON ORDER "B" IOWA HIGH ACCURACY REFERENCE NETWORK (HARN) CONTROL ESTABLISHED BY THE NATIONAL GEODETIC SURVEY AND BASED ON THE NORTH AMERICAN DATUM OF 1983, 1996 ADJUSTMENT.

LATITUDE NORTH 43° 20' 29.638614"
 LONGITUDE WEST 94° 55' 09.525473"
 ELLIPSOID HEIGHT (meter) 409.964 * (Based on GEOID99 Model)

| | | |
|------------------------------------|----------------------|----------------------|
| IOWA COORDINATE SYSTEM, NORTH ZONE | CONVERGENCE ANGLE | <u>0° 57' 42.95"</u> |
| | SCALE FACTOR | <u>0.999950</u> |
| COORDINATES (US FEET) | COORDINATES (METERS) | |
| NORTHING (Y) | NORTHING (Y) | <u>1205529.440</u> |
| EASTING (X) | EASTING (X) | <u>1384914.733</u> |

VERTICAL VALUES ORIGINATED ON VERTICAL CONTROL ESTABLISHED BY THE NATIONAL GEODETIC SURVEY AND/OR THE U.S. GEOLOGICAL SURVEY AND BASED ON THE NORTH AMERICAN VERTICAL DATUM OF 1988.

ELEVATION (US FEET) 1437.96 ELEVATION (METERS) 438.291



SECTION MAP



SKETCH BY PCS