

GPS SURVEY MARK DESCRIPTION

GIS MAPPING BY:
 THE SIDWELL COMPANY
 WEST CHICAGO, ILLINOIS

THE OFFICE OF THE
 COUNTY ENGINEER
 DICKINSON COUNTY, IOWA

DESIGNATION 983513 2 GPS NO. 8054 COUNTY DICKINSON STATE IOWA
 LOCATED IN SECTION 13 TWP 98 N RANGE 35 W USGS QUAD MAP TERRIL
 THE STATION IS AT
THE NORTHWEST CORNER OF THE INTERSECTION OF 240TH STREET AND 340TH AVENUE.

MARK BERNTSEN MONUMENT WITH 2-1/2" ALUMINUM DISK ON ROD WITH 6" ACCESS COVER
 MARK EXISTING VALUES AS PUBLISHED BY
 MARK SET VALUES ESTABLISHED BY Patrick Engineering Inc. DATE August, 2002

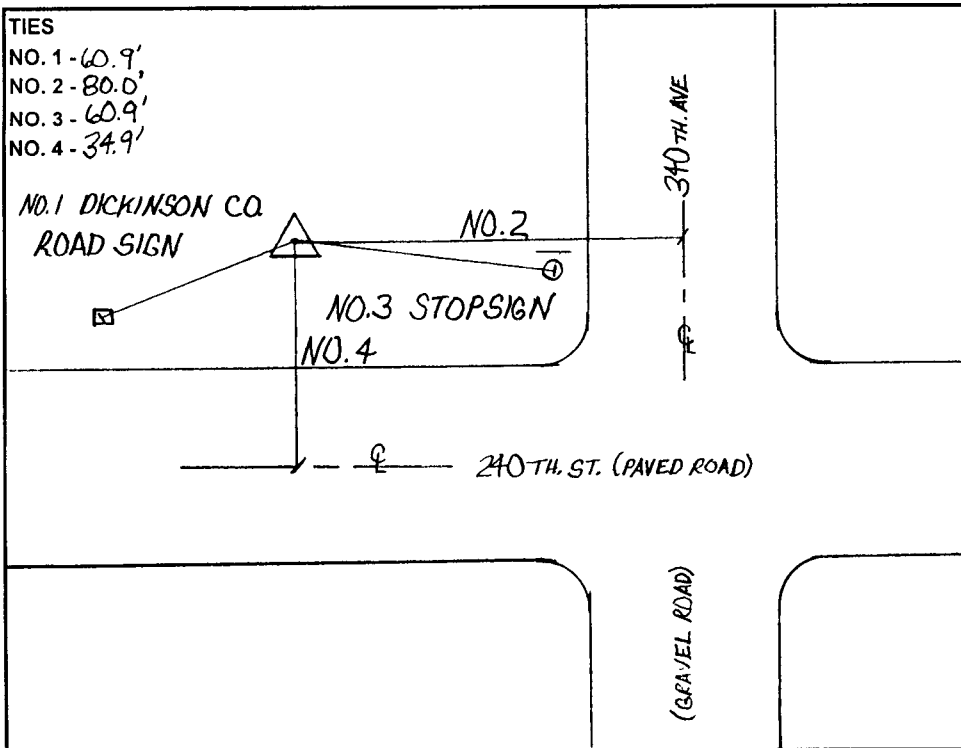
HORIZONTAL VALUES ORIGINATED ON ORDER "B" IOWA HIGH ACCURACY REFERENCE NETWORK (HARN) CONTROL ESTABLISHED BY THE NATIONAL GEODETIC SURVEY AND BASED ON THE NORTH AMERICAN DATUM OF 1983, 1996 ADJUSTMENT.

LATITUDE NORTH 43° 17' 54.924206"
 LONGITUDE WEST 94° 54' 51.389939"
 ELLIPSOID HEIGHT (meter) 407 780 * (Based on GEOID99 Model)

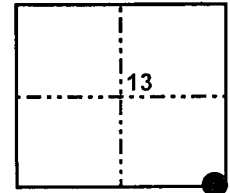
IOWA COORDINATE SYSTEM, NORTH ZONE	CONVERGENCE ANGLE	<u>0° 57' 30.66"</u>
	SCALE FACTOR	<u>0 999942</u>
COORDINATES (US FEET)	COORDINATES (METERS)	
NORTHING (Y)	NORTHING (Y)	<u>1200748 599</u>
EASTING (X)	EASTING (X)	<u>1385243 299</u>

VERTICAL VALUES ORIGINATED ON VERTICAL CONTROL ESTABLISHED BY THE NATIONAL GEODETIC SURVEY AND/OR THE U.S. GEOLOGICAL SURVEY AND BASED ON THE NORTH AMERICAN VERTICAL DATUM OF 1988.

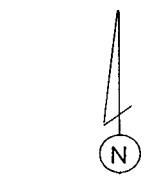
ELEVATION (US FEET) 1431.13 ELEVATION (METERS) 436.209



TIES
 NO. 1 - 60.9'
 NO. 2 - 80.0'
 NO. 3 - 60.9'
 NO. 4 - 34.9'



SECTION MAP



SKETCH BY CCS

PATRICK 09-2002