

### GPS SURVEY MARK DESCRIPTION

GIS MAPPING BY:  
 THE SIDWELL COMPANY  
 WEST CHICAGO, ILLINOIS

THE OFFICE OF THE  
 COUNTY ENGINEER  
 DICKINSON COUNTY, IOWA

DESIGNATION 1003832 4 GPS NO. LAKE PARK COUNTY DICKINSON STATE IOWA  
 LOCATED IN SECTION 32 TWP 100 N RANGE 38 W USGS QUAD MAP LAKE PARK  
 TO REACH THE STATION FROM  
THE INTERSECTION OF 110TH AVENUE AND HIGHWAY 9; GO NORTH ON HIGHWAY 9 FOR 0.9 MILE TO THE TOP OF A HILL AND  
THE STATION ON THE RIGHT (EAST OF THE CENTERLINE)

MARK STANDARD DISK STAMPED "LAKE PARK 1971", SET IN 12" CONCRETE MONUMENT, FLUSH TO THE GROUND  
 MARK EXISTING  VALUES AS PUBLISHED BY National Geodetic Survey (Horizontal)  
 MARK SET  VALUES ESTABLISHED BY Patrick Engineering Inc (Vertical) DATE August, 2002

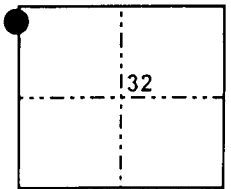
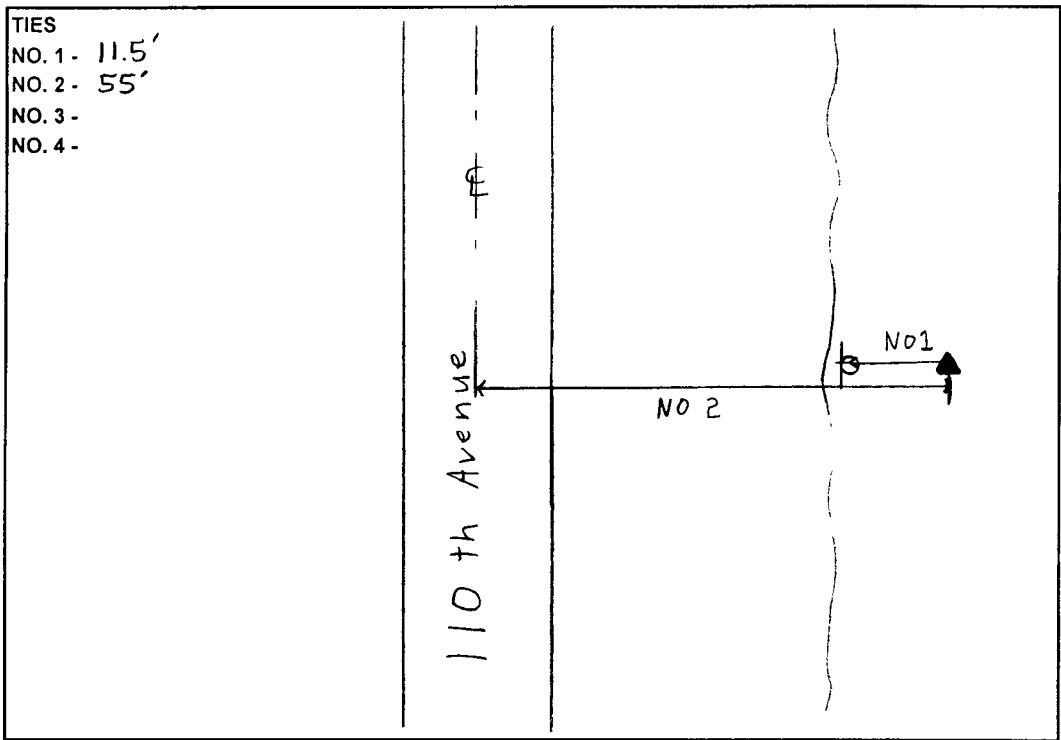
HORIZONTAL VALUES ORIGINATED ON ORDER "B" IOWA HIGH ACCURACY REFERENCE NETWORK (HARN) CONTROL ESTABLISHED BY THE NATIONAL GEODETIC SURVEY AND BASED ON THE NORTH AMERICAN DATUM OF 1983, 1996 ADJUSTMENT.

LATITUDE NORTH 43° 26' 36.327280"  
 LONGITUDE WEST 95° 22' 06.598700"  
 ELLIPSOID HEIGHT (meter) 439.049 \* (Based on GEOID99 Model)

IOWA COORDINATE SYSTEM, NORTH ZONE	CONVERGENCE ANGLE	<u>-1° 15' 58.92"</u>
	SCALE FACTOR	<u>0.999968</u>
COORDINATES (US FEET)	COORDINATES (METERS)	
NORTHING (Y) <u>3994584.09</u>	NORTHING (Y) <u>1217551.666</u>	
EASTING (X) <u>4425016.19</u>	EASTING (X) <u>1348747.632</u>	

VERTICAL VALUES ORIGINATED ON VERTICAL CONTROL ESTABLISHED BY THE NATIONAL GEODETIC SURVEY AND/OR THE U.S. GEOLOGICAL SURVEY AND BASED ON THE NORTH AMERICAN VERTICAL DATUM OF 1988.

ELEVATION (US FEET) 1530.27 ELEVATION (METERS) 466.427



SECTION MAP



SKETCH BY SL

PATRICK 09-2002