

## GPS SURVEY MARK DESCRIPTION

**GIS MAPPING BY:**  
**THE SIDWELL COMPANY**  
 WEST CHICAGO, ILLINOIS

**THE OFFICE OF THE**  
**COUNTY ENGINEER**  
 DICKINSON COUNTY, IOWA

**DESIGNATION** 1003830 2 **GPS NO.** M 20 **COUNTY** DICKINSON **STATE** IOWA  
**LOCATED IN SECTION** 30 **TWP** 100 N **RANGE** 38 W **USGS QUAD MAP** LAKE PARK  
**THE STATION IS** LOCATED IN DICKINSON COUNTY, THE STATION IS APPROXIMATELY 400' WEST ALONG THE CHICAGO ROCK ISLAND AND PACIFIC RAILROAD FROM 110TH AVENUE, THE STATION IS 49' SOUTHWEST OF MILEPOLE 237+10

**MARK** STANDARD DISK, STAMPED M 20, 1934, SET IN THE TOP OF A CONCRETE POST PROJECTION 5" ABOVE THE GROUND  
 **MARK EXISTING**     **VALUES AS PUBLISHED BY** National Geodetic Survey  
 **MARK SET**         **VALUES ESTABLISHED BY** \_\_\_\_\_ **DATE** \_\_\_\_\_

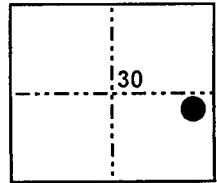
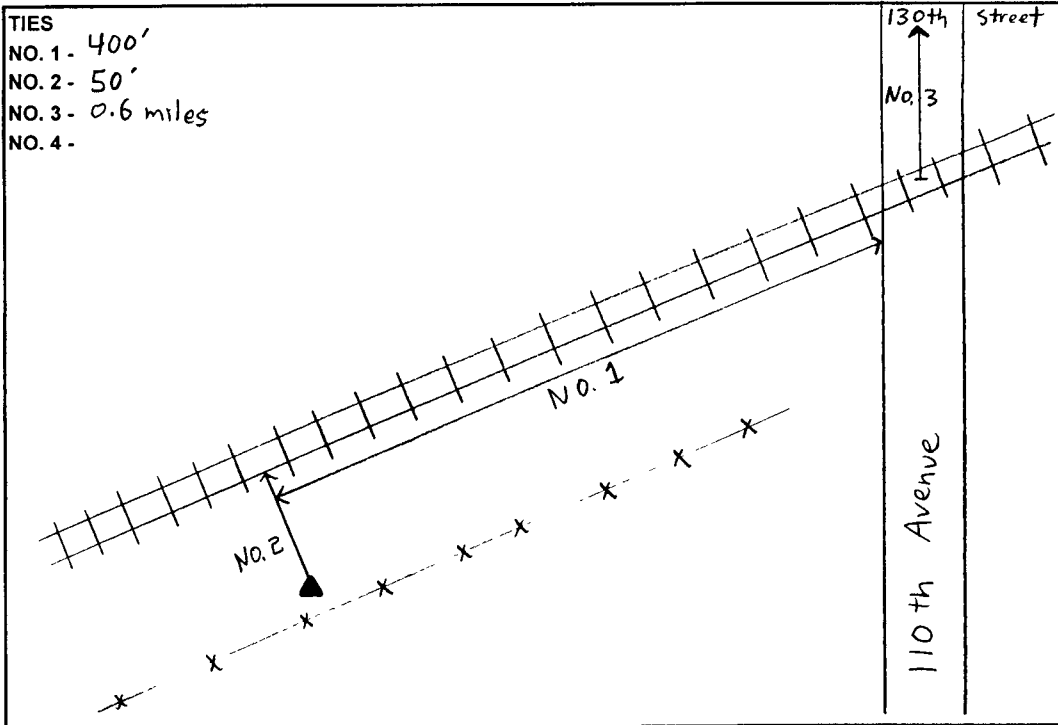
**HORIZONTAL VALUES ORIGINATED ON ORDER "B" IOWA HIGH ACCURACY REFERENCE NETWORK (HARN) CONTROL ESTABLISHED BY THE NATIONAL GEODETIC SURVEY AND BASED ON THE NORTH AMERICAN DATUM OF 1983, 1996 ADJUSTMENT.**

**LATITUDE NORTH** 43° 27' 02.021774"  
**LONGITUDE WEST** 95° 22' 12.060951"  
**ELLIPSOID HEIGHT (meter)** 428.170 \* (Based on GEOID99 Model)

<b>IOWA COORDINATE SYSTEM, NORTH ZONE</b>	<b>CONVERGENCE ANGLE</b>	<u>-1° 16' 02 62"</u>
	<b>SCALE FACTOR</b>	<u>0.999972</u>
<b>COORDINATES (US FEET)</b>	<b>COORDINATES (METERS)</b>	
<b>NORTHING (Y)</b>	<b>NORTHING (Y)</b>	<u>1218347.189</u>
<b>EASTING (X)</b>	<b>EASTING (X)</b>	<u>1348642 369</u>

**VERTICAL VALUES ORIGINATED ON VERTICAL CONTROL ESTABLISHED BY THE NATIONAL GEODETIC SURVEY AND/OR THE U.S. GEOLOGICAL SURVEY AND BASED ON THE NORTH AMERICAN VERTICAL DATUM OF 1988.**

**ELEVATION (US FEET)** 1494 52                      **ELEVATION (METERS)** 455 531



**SECTION MAP**



**SKETCH BY** SL

PATRICK 09-2002