

**GPS SURVEY MARK DESCRIPTION**

**GIS MAPPING BY:**  
**THE SIDWELL COMPANY**  
**WEST CHICAGO, ILLINOIS**

**THE OFFICE OF THE**  
**COUNTY ENGINEER**  
**DICKINSON COUNTY, IOWA**

DESIGNATION 983636 1 GPS NO. WHYNOT COUNTY DICKINSON STATE IOWA  
 LOCATED IN SECTION 36 TWP 98 N RANGE 36 W USGS QUAD MAP SPIRIT LAKE SE  
 TO REACH THE STATION FROM  
THE INTERSECTION OF 280TH AVENUE AND 270TH STREET, HEAD NORTH ON 280TH AVENUE FOR 0.7 MILE TO THE  
STATION ON THE LEFT

**MARK** STANDARD DISK STAMPED "WHYNOT 1971", SET IN 12" CONCRETE MONUMENT, FLUSH TO THE GROUND  
 MARK EXISTING     VALUES AS PUBLISHED BY National Geodetic Survey (Horizontal)  
 MARK SET         VALUES ESTABLISHED BY Patrick Engineering Inc. (Vertical)        DATE August, 2002

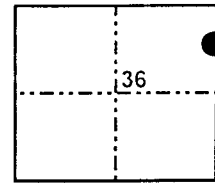
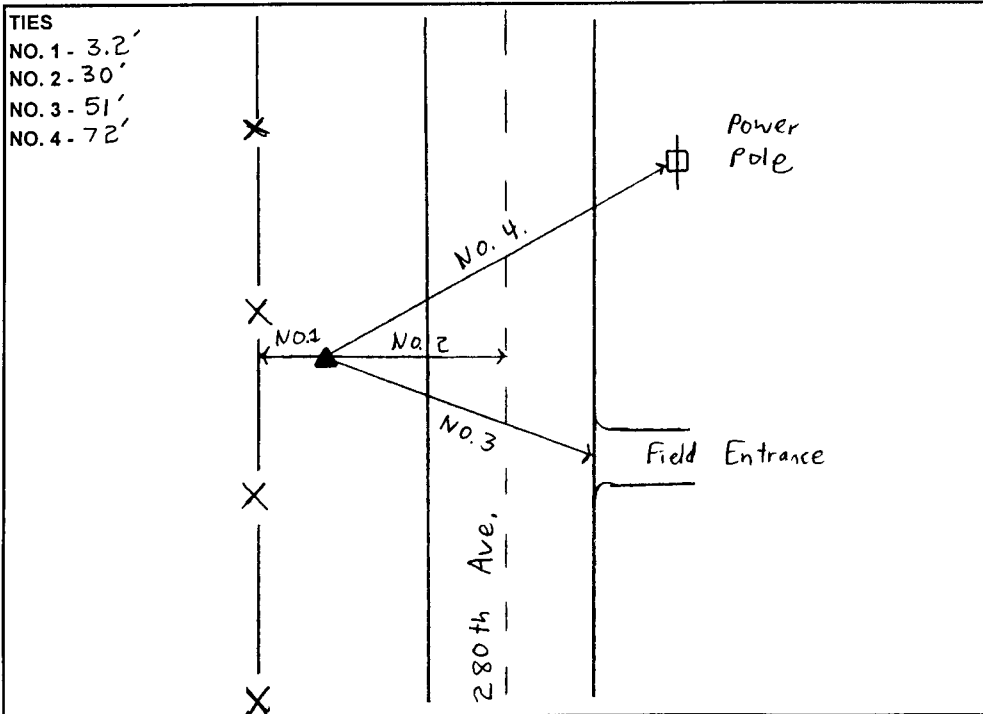
**HORIZONTAL VALUES ORIGINATED ON ORDER "B" IOWA HIGH ACCURACY REFERENCE NETWORK (HARN) CONTROL ESTABLISHED BY THE NATIONAL GEODETIC SURVEY AND BASED ON THE NORTH AMERICAN DATUM OF 1983, 1996 ADJUSTMENT.**

LATITUDE NORTH 43° 15' 56.195080"  
 LONGITUDE WEST 95° 01' 58.986470"  
 ELLIPSOID HEIGHT (meter) 417.675 \* (Based on GEOID99 Model)

IOWA COORDINATE SYSTEM, NORTH ZONE		CONVERGENCE ANGLE	<u>-1° 02' 20.46"</u>
		SCALE FACTOR	<u>0.999934</u>
COORDINATES (US FEET)		COORDINATES (METERS)	
NORTHING (Y)	<u>3927988.01</u>	NORTHING (Y)	<u>1197253.140</u>
EASTING (X)	<u>4512917.88</u>	EASTING (X)	<u>1375540.121</u>

**VERTICAL VALUES ORIGINATED ON VERTICAL CONTROL ESTABLISHED BY THE NATIONAL GEODETIC SURVEY AND/OR THE U.S. GEOLOGICAL SURVEY AND BASED ON THE NORTH AMERICAN VERTICAL DATUM OF 1988.**

ELEVATION (US FEET) 1463.60        ELEVATION (METERS) 446.106



SECTION MAP



SKETCH BY SL

PATRICK 09-2002