

Schneider Land Surveying and Planning, Inc.
P.O. Box 128 - 906 First Street NW
Farley, Iowa 52046
Ph. 563-744-3631 Fax 563-744-3629
Friday, December 28, 2012 2:34:13 PM

PROJECT: M:\PRO files\1705 DBQ CO CONTROL.pro

Point Coordinates Listing

Point	North	East	Elev	Name
78A	3676611.17	5591013.65	1154.97	IPF5
99A	3675572.28	5558416.74	1079.53	DEL27
102A	3612994.48	5561247.42	921.55	DEL63
103A	3580940.54	5613976.17	863.97	JONESGPS67
104A	3708573.30	5591191.36	1216.83	CCGPS187
501A	3600252.08	5639990.49	924.06	IPF6
502A	3599279.38	5608625.20	913.12	IPF6
503A	3695430.50	5605769.66	1134.20	IPF6
504A	3691957.77	5574210.18	1177.57	MNS
505A	3660249.61	5573574.96	1040.74	IPF6
506A	3660913.54	5606995.21	1161.66	IPF6
507A	3628586.95	5605223.50	1035.40	IPF6
508A	3626423.88	5576552.25	1089.32	IPF6
509A	3595998.07	5575738.77	868.09	IPF5
510A	3579914.71	5567382.99	962.49	IPF6
504C	3691709.58	5574209.28	1172.27	IPF6

EX

NEW

2001
Delaware County, Iowa
Iowa North Zone (1401)
NAD_83(1996)

Point Number: 27

Northing: 3675572.34(Ft) Easting: 5558416.66(Ft)

Northing: 1120316.690(M) Easting: 1694208.785(M)

Elev: 1079.38(Ft) NAVD_88

Elev: 328.996(M) NAVD_88 Ellip Ht: 297.395(M) 99C Geoid Ht: -31.601(M)

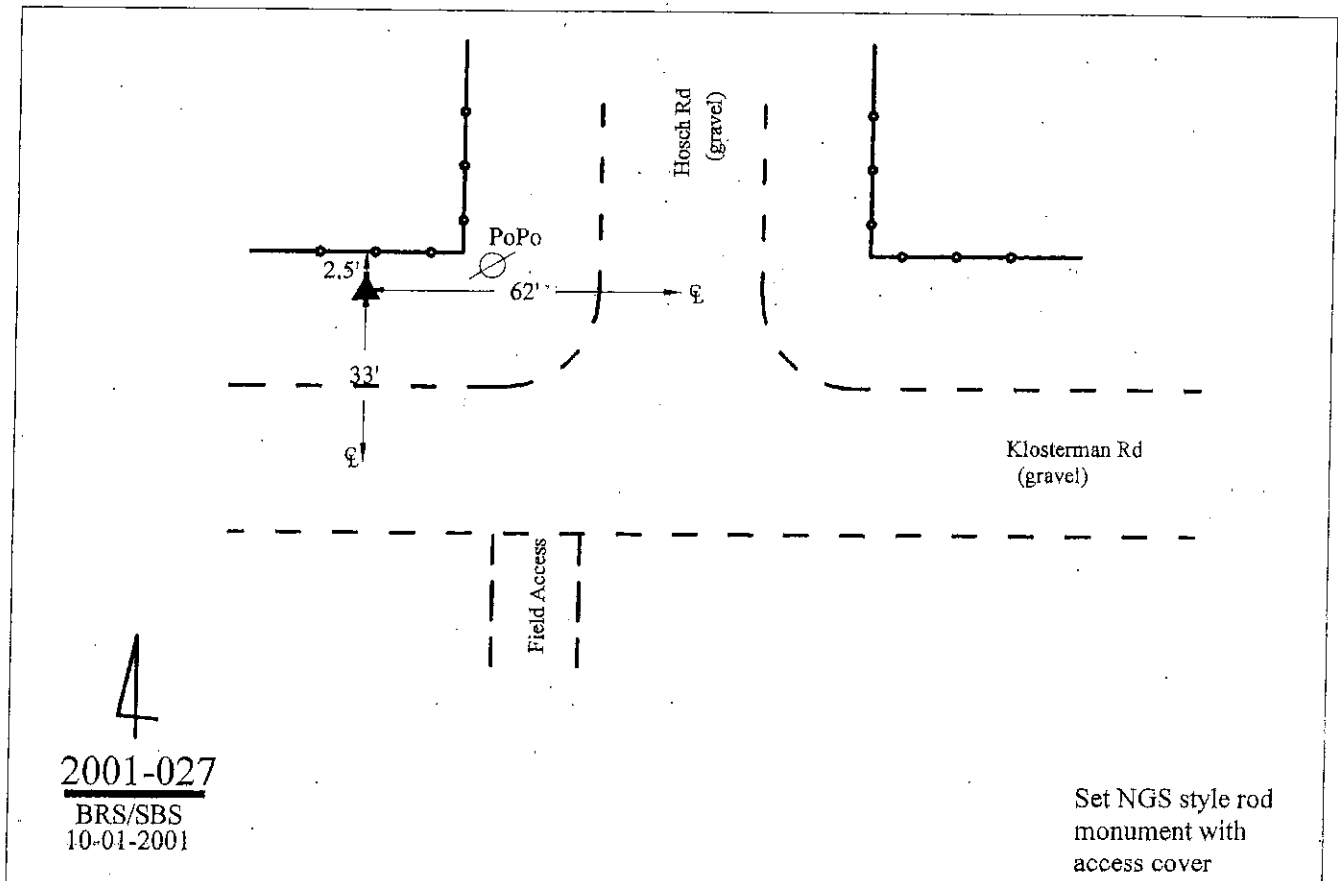
Latitude: 42-33-31.425833 N Longitude: 91-08-04.871004 W

Theta: 1-36-11.08 Combination Factor: 0.99990053

Designation: DELAWARE COUNTY GPS CONTROL PT 2001-27

Monument Type: 5/8" dia driven aluminum rod with a 2-1/2" dia aluminum cap and permanent magnet encased in a 5" dia PVC pipe with an aluminum access cover.

Remarks: Near the SE Cor of Sec 36 T90N R3W.



2001
Delaware County, Iowa
Iowa North Zone (1401)
NAD_83(1996)

Point Number: 63

Northing: 3612994.46(Ft) Easting: 5561247.36(Ft)

Northing: 1101242.914(M) Easting: 1695071.585(M)

Elev: 921.34(Ft) NAVD_88

Elev: 280.824(M) NAVD_88 Ellip Ht: 248.980(M) 99C Geoid Ht: -31.844(M)

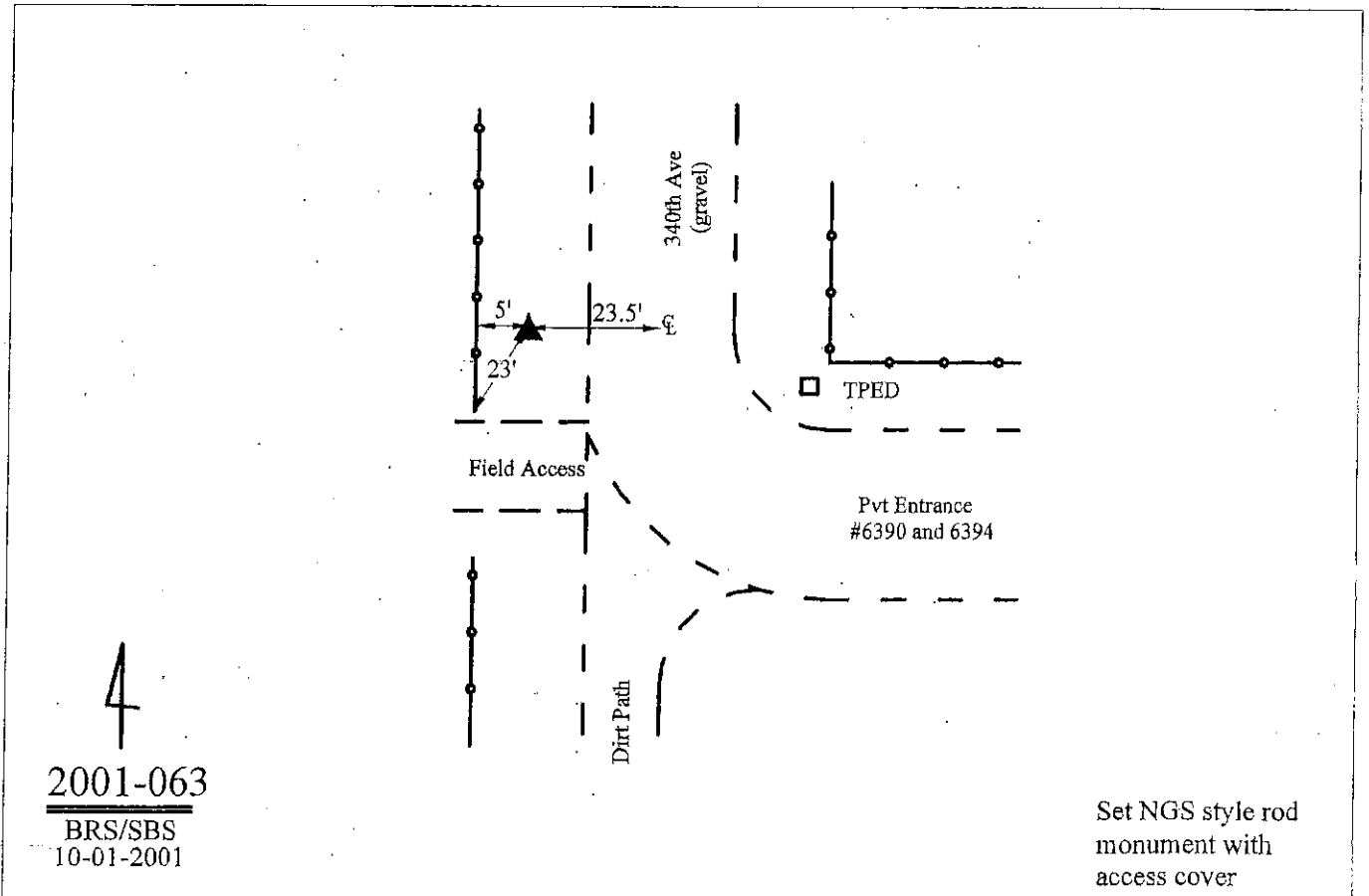
Latitude: 42-23-12.705600 N Longitude: 91-07-50.493189 W

Theta: 1-36-20.83 Combination Factor: 0.99991827

Designation: DELAWARE COUNTY GPS CONTROL PT 2001-63

Monument Type: 5/8" dia driven aluminum rod with a 2-1/2" dia aluminum cap and permanent magnet encased in a 5" dia PVC pipe with an aluminum access cover.

Remarks: In the SE 1/4 of Sec 36 T88N R3W.



2001-063
BRS/SBS
10-01-2001

Set NGS style rod
monument with
access cover

Jones County, Iowa
Iowa North Zone (1401)
Horiz. Datum: NAD83(1996)
Vert. Datum: NAVD 1988
US Survey Feet
2004

Point Name: **67**

Northing: **3580940.58sft** Easting: **5613976.26sft**

Orthometric Height: **863.83sft**

Ellipsoid Height: **758.25sft**

Latitude: **42°17'41.00310"N**

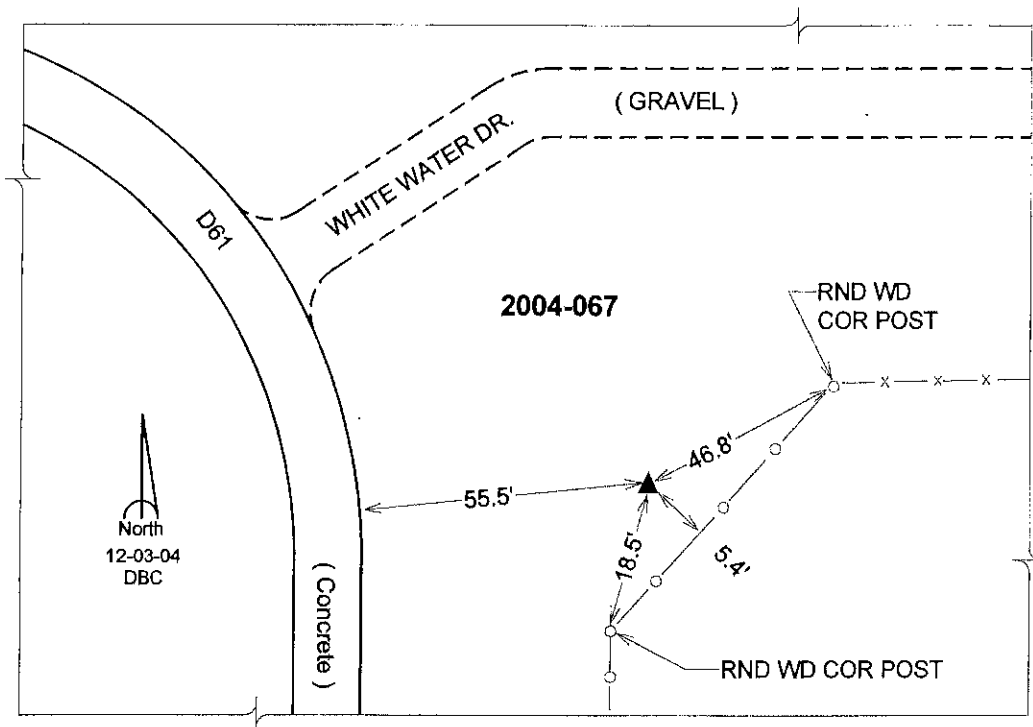
Longitude: **90°56'21.10401"W**

Mapping Angle: **1°44'08"**

Combination Scale Factor: **0.999930250**

Designation: JONES CO. GPS CONTROL PT. 2004-067

Monument Type: Berntsen Top Security Rod Monument with a 2-1/2" dia. domed cap and a permanent magnet encased in a 5" dia. PVC pipe with a NGS style aluminum access cover.



2002
Clayton County, Iowa
Iowa North Zone (1401)
NAD_83(1996)

Point Number: 187

Northing: 3708573.36(Ft)

Easting: 5591191.37(Ft)

Northing: 1130375.421(M)

Easting: 1704198.537(M)

Elev: 1216.70(Ft) NAVD_88

Elev: 370.852(M) NAVD_88

Ellip Ht: 338.977(M)

99C Geoid Ht: -31.875(M)

Latitude: 42-38-47.991540 N

Longitude: -91-00-34.125908 W

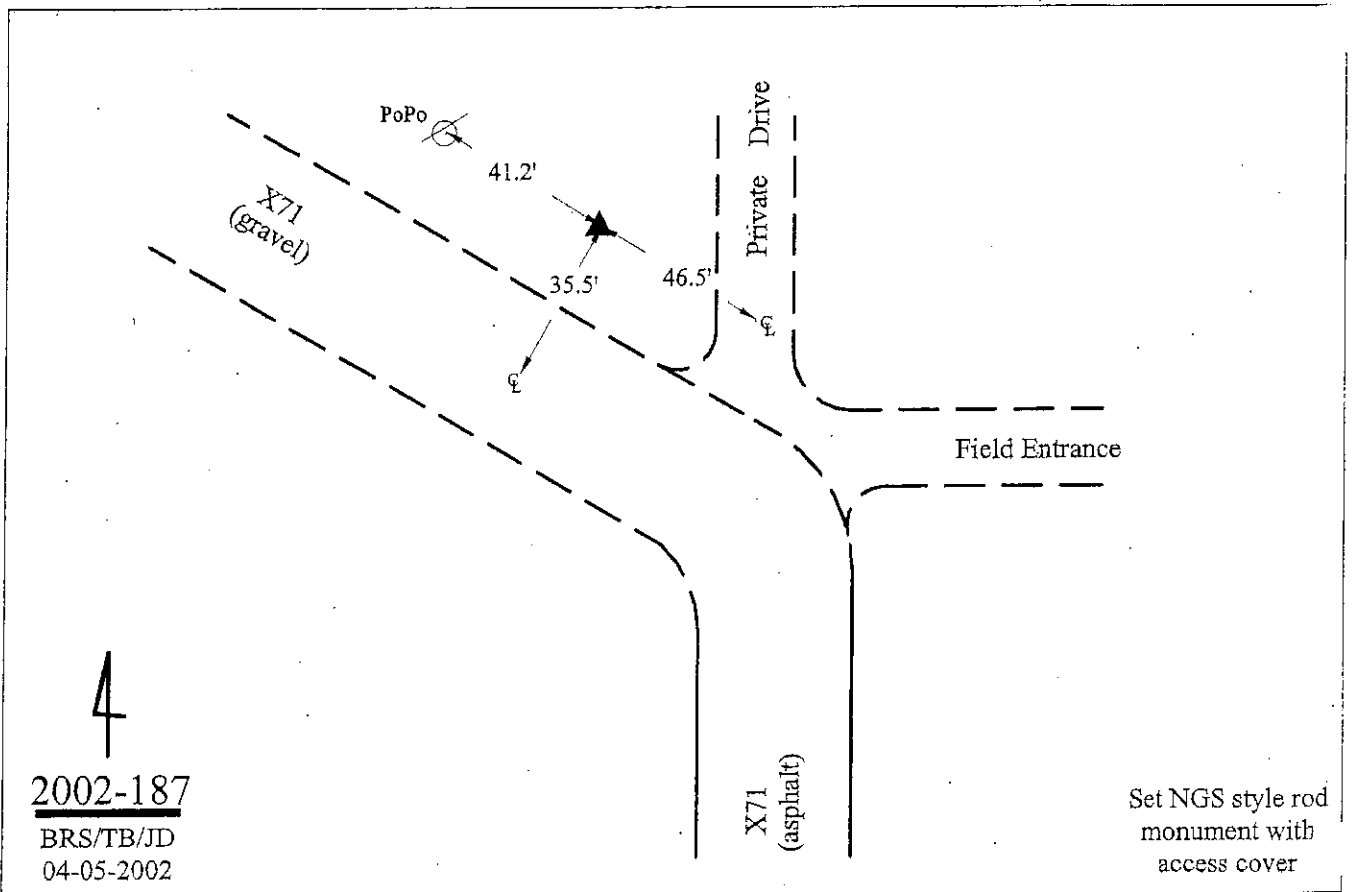
Theta: 1-41-16.57

Combination Factor: 0.999892273

Designation: CLAYTON COUNTY GPS CONTROL PT 2002-187

Monument Type: 5/8" dia. driven aluminum rod with 2-1/2" dia. aluminum cap and permanent magnet encased in a 5/8" dia. PVC pipe with an aluminum access cover.

Remarks: Near the S¹/₄ cor. SW¹/₄ of Sec. 31-91-1



**DUBUQUE COUNTY, IOWA
GPS CONTROL MONUMENT 501A**

IOWA NORTH ZONE
HORIZONTAL DATUM : NAD83 (1996)
VERTICAL DATUM: NAVD 1988 (GEOID2009 GRS80)
US SURVEY FEET

Designation: DUBUQUE CO. GPS CONTROL POINT 501A

Orthometric Height: 924.06

Description: 5' LONG, 3/4" SMOOTH IRON BAR

Ellipsoid Height: 818.22

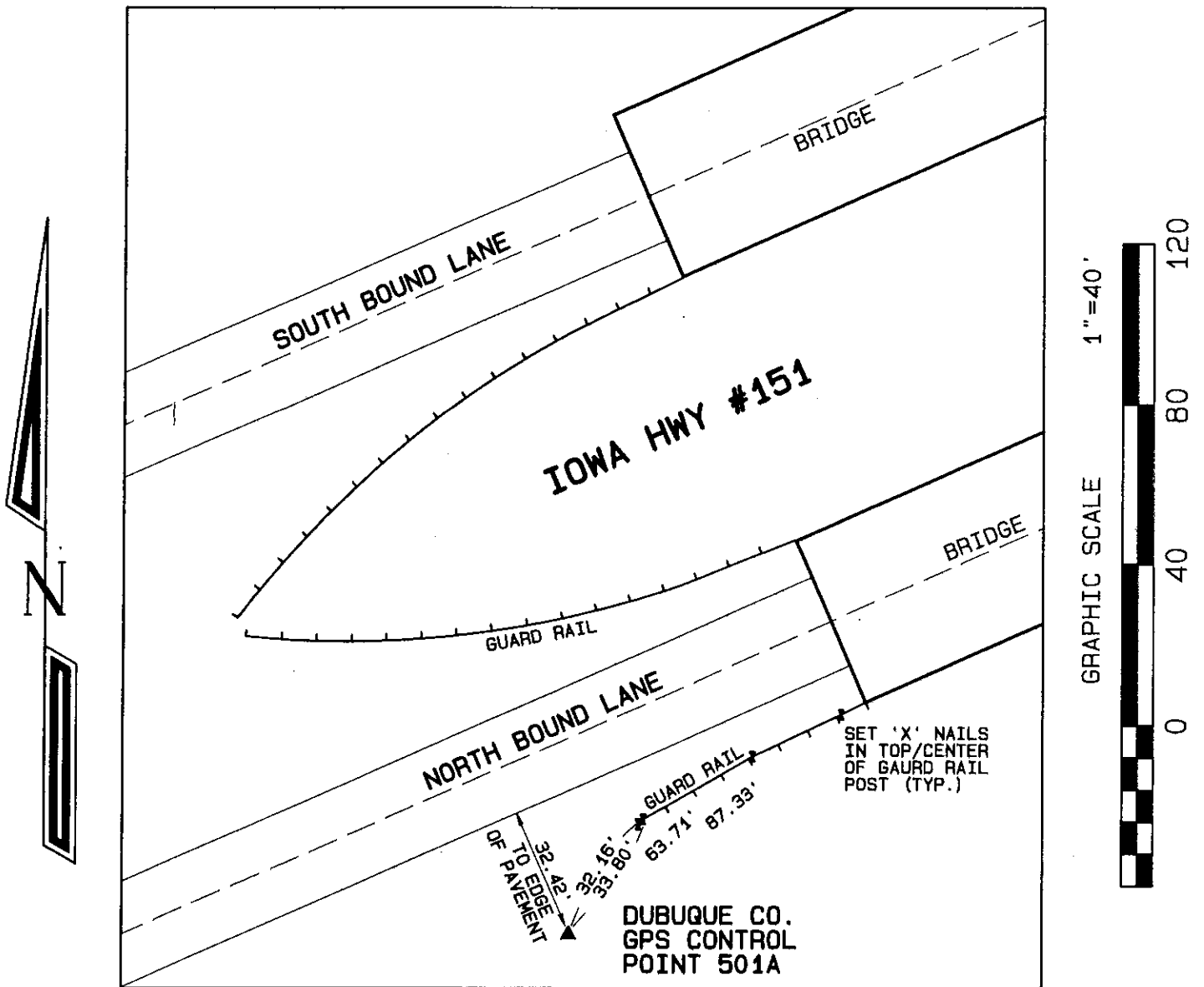
NORTHING: 3600252.08

Latitude: 42°20'43.75211"N

EASTING: 5639990.49

Longitude: 90°50'27.04573"W

PLAN - VIEW



DUBUQUE COUNTY, IOWA GPS CONTROL MONUMENT 502A

IOWA NORTH ZONE
HORIZONTAL DATUM : NAD83 (1996)
VERTICAL DATUM: NAVD 1988 (GEOID2009 GRS80)
US SURVEY FEET

Designation: DUBUQUE CO. GPS CONTROL POINT 502A

Orthometric Height: 913.12

Description: 5' LONG, 3/4" SMOOTH IRON BAR

Ellipsoid Height: 807.60

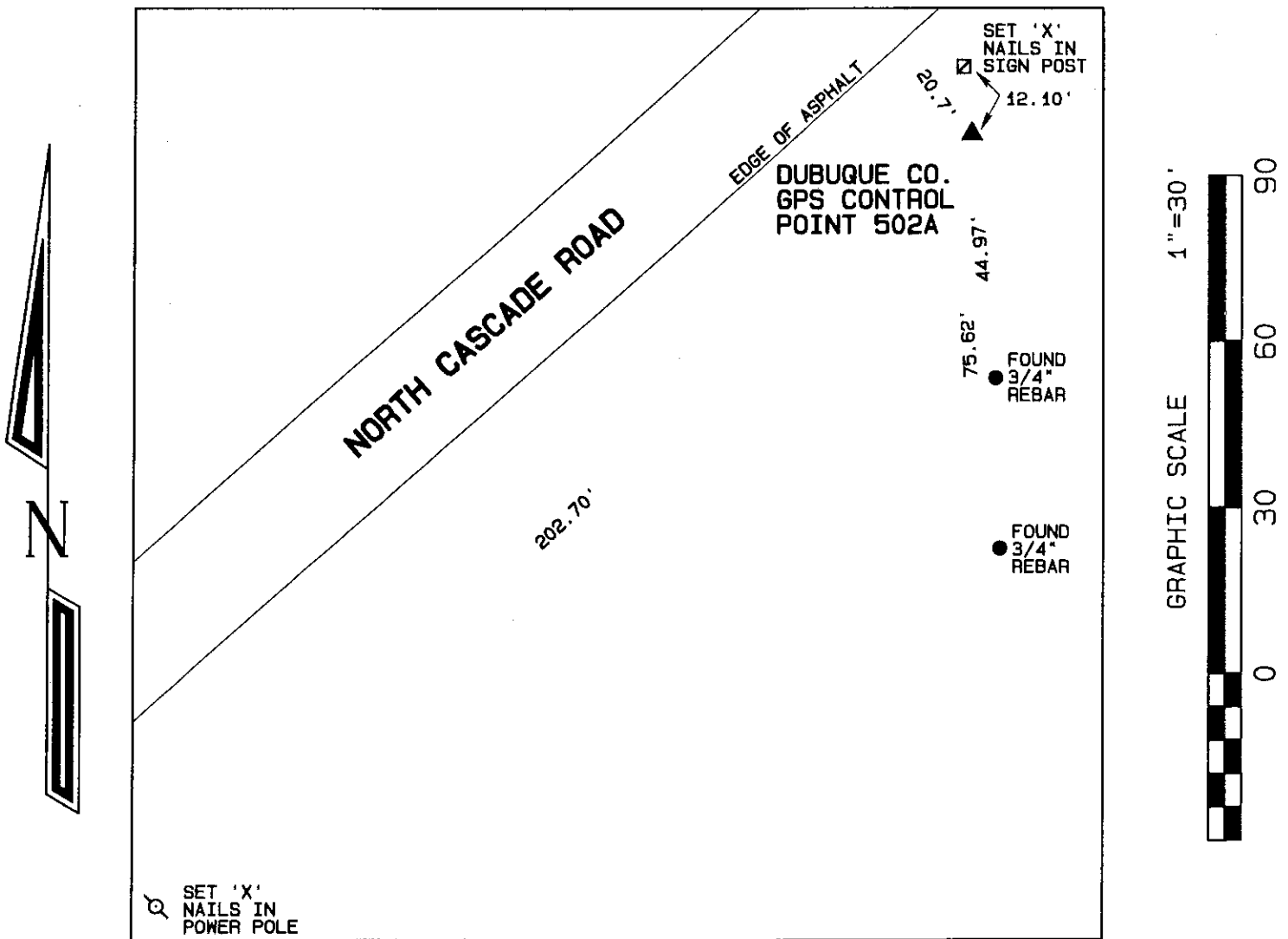
NORTHING: 3599279.38

Latitude: 42°20'43.67970"N

EASTING: 5608625.20

Longitude: 90°57'24.93409"W

PLAN - VIEW



**DUBUQUE COUNTY, IOWA
GPS CONTROL MONUMENT 503A**

IOWA NORTH ZONE
HORIZONTAL DATUM : NAD83 (1996)
VERTICAL DATUM: NAVD 1988 (GEOID2009 GRS80)
US SURVEY FEET

Designation: DUBUQUE CO. GPS CONTROL POINT 503A

Orthometric Height: 1134.20

Description: 5' LONG, 3/4" SMOOTH IRON BAR

Ellipsoid Height: 1029.14

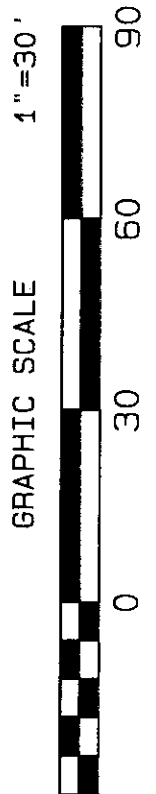
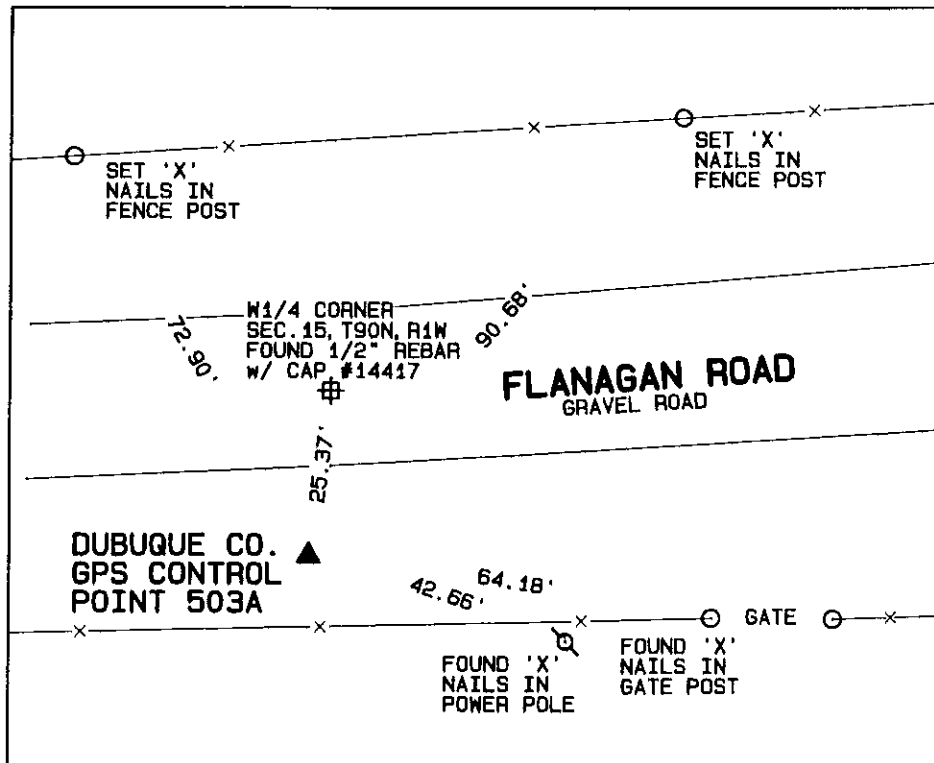
NORTHING: 3695430.50

Latitude: 42°36'33.93244"N

EASTING: 5605769.66

Longitude: 90°57'24.42982"W

PLAN - VIEW



**DUBUQUE COUNTY, IOWA
GPS CONTROL MONUMENT 504C**

IOWA NORTH ZONE
HORIZONTAL DATUM : NAD83 (1996)
VERTICAL DATUM: NAVD 1988 (GEOID2009 GRS80)
US SURVEY FEET

Designation: DUBUQUE CO. GPS CONTROL POINT 504C

Orthometric Height: 1172.27

Description: 5' LONG, 3/4" SMOOTH IRON BAR

Ellipsoid Height: 1068.16

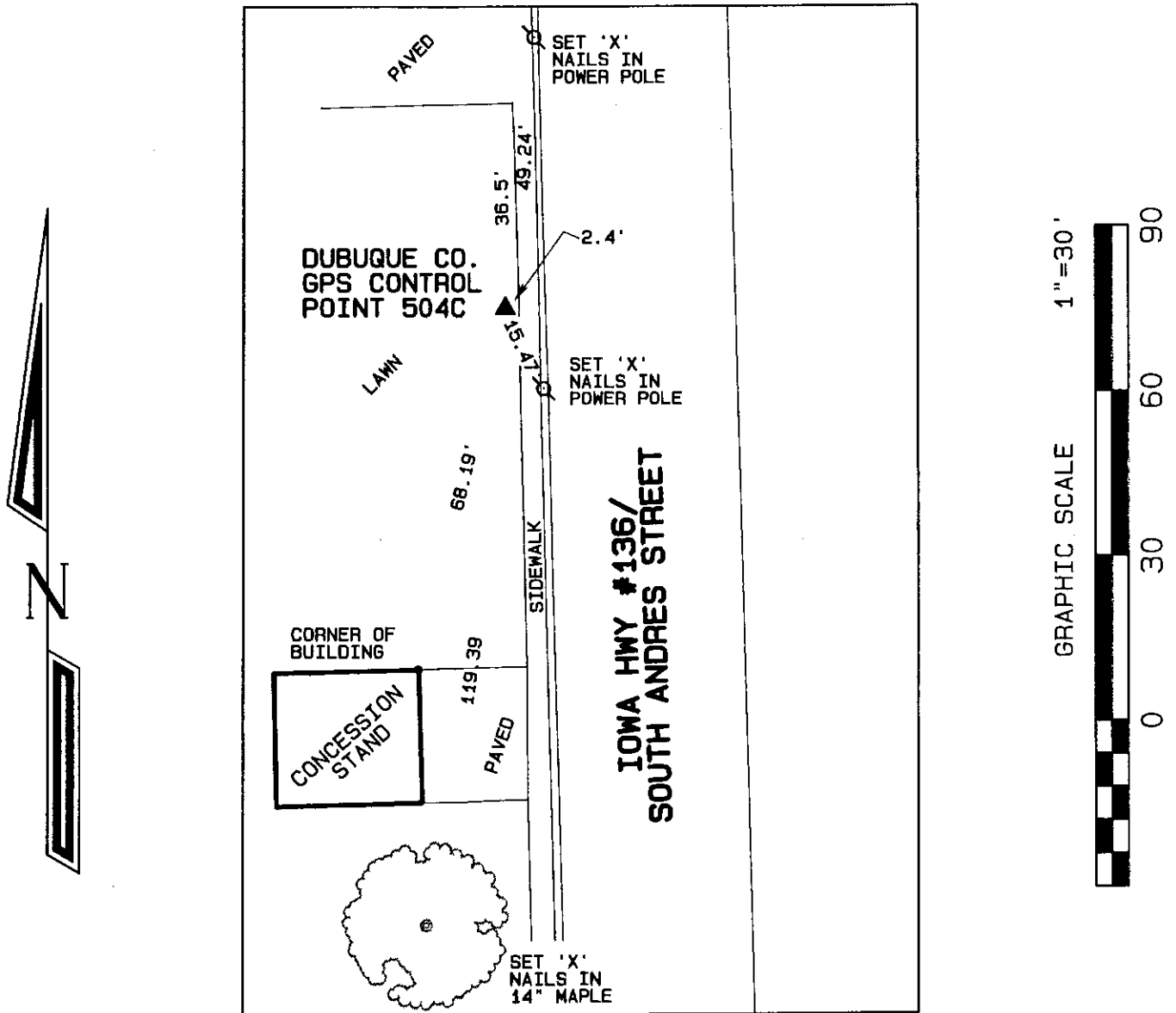
NORTHING: 3691709.58

Latitude: 42°36'06.35241"N

EASTING: 5574209.28

Longitude: 91°04'27.74577"W

PLAN - VIEW



DUBUQUE COUNTY, IOWA GPS CONTROL MONUMENT 505A

IOWA NORTH ZONE
HORIZONTAL DATUM : NAD83 (1996)
VERTICAL DATUM: NAVD 1988 (GEOID2009 GRS80)
US SURVEY FEET

Designation: DUBUQUE CO. GPS CONTROL POINT 505A

Orthometric Height: 1040.74

Description: 5' LONG, 3/4" SMOOTH IRON BAR

Ellipsoid Height: 936.37

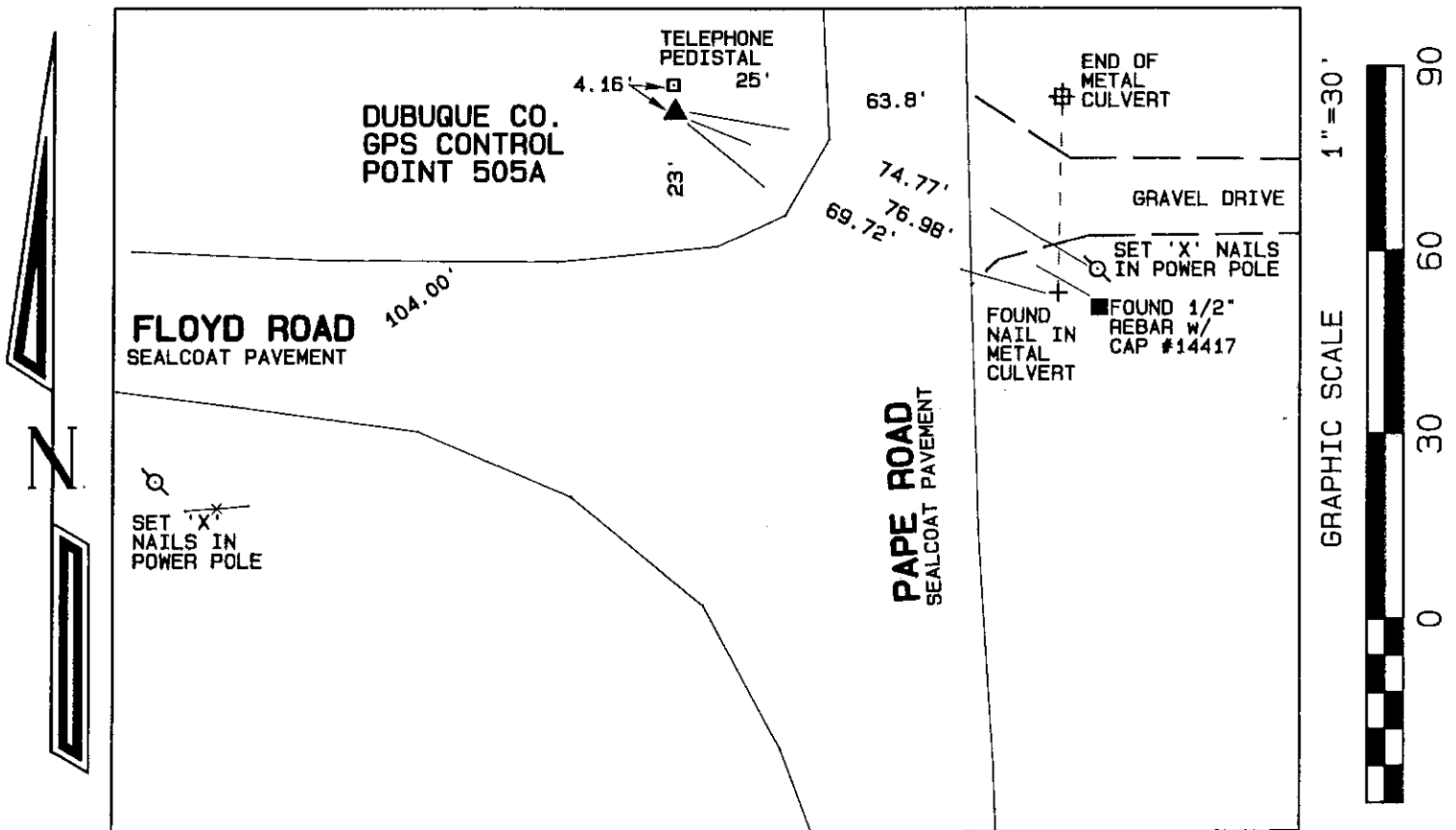
NORTHING: 3660249.61

Latitude: 42°30'55.88364"N

EASTING: 5573574.96

Longitude: 91°04'48.26403"W

PLAN - VIEW



DUBUQUE COUNTY, IOWA GPS CONTROL MONUMENT 506A

IOWA NORTH ZONE
HORIZONTAL DATUM : NAD83(1996)
VERTICAL DATUM: NAVD 1988 (GEOID2009 GRS80)
US SURVEY FEET

Designation: DUBUQUE CO. GPS CONTROL POINT 506A

Orthometric Height: 1161.66

Description: 5' LONG, 3/4" SMOOTH IRON BAR

Ellipsoid Height: 1056.54

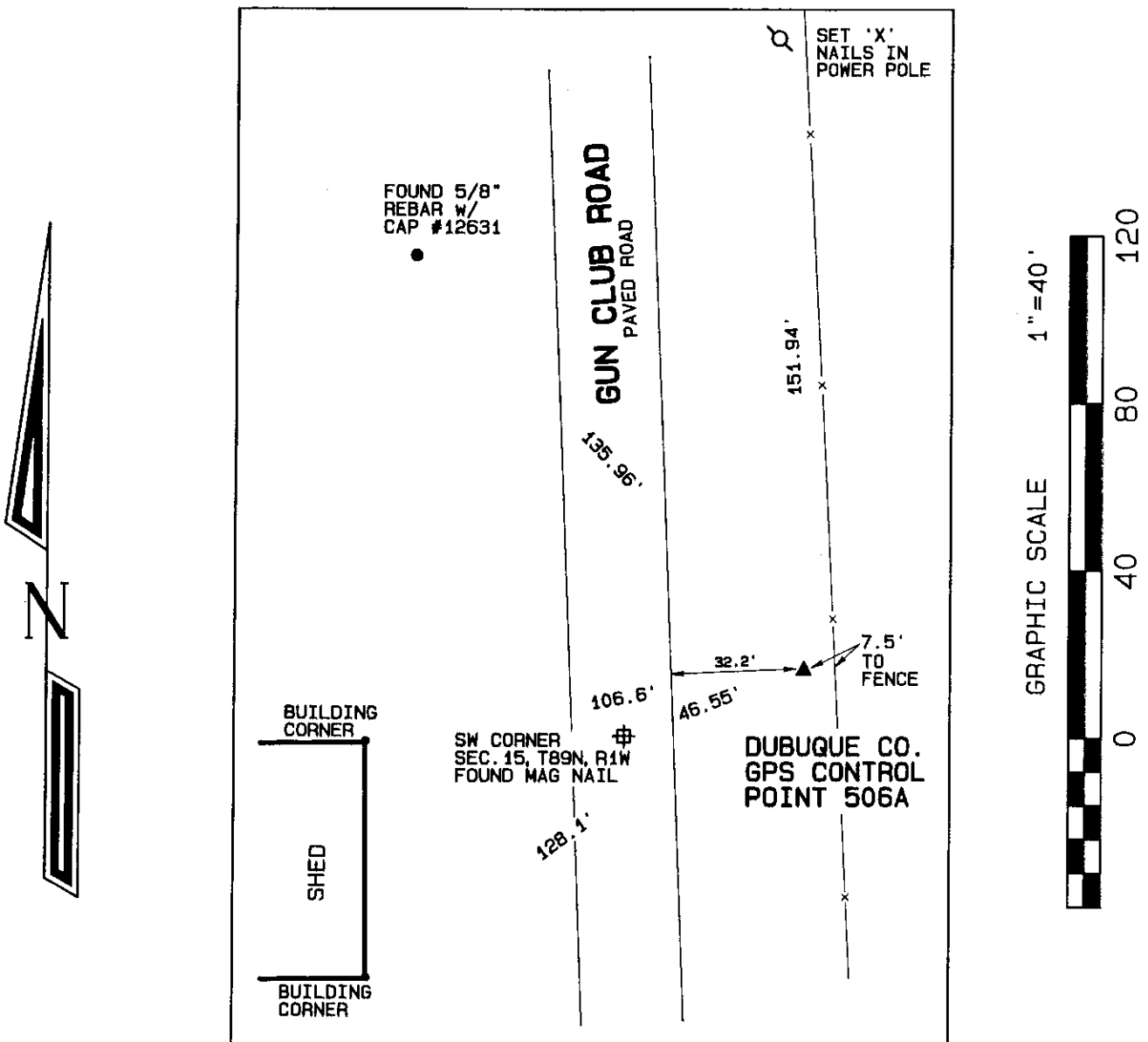
NORTHING: 3660913.54

Latitude: 42°30'52.74845"N

EASTING: 5606995.21

Longitude: 90°57'21.93606"W

PLAN - VIEW



**DUBUQUE COUNTY, IOWA
GPS CONTROL MONUMENT 507A**

IOWA NORTH ZONE
HORIZONTAL DATUM : NAD83 (1996)
VERTICAL DATUM: NAVD 1988 (GEOID2009 GRS80)
US SURVEY FEET

Designation: DUBUQUE CO. GPS CONTROL POINT 507A

Orthometric Height: 1035.40

Description: 5' LONG, 3/4" SMOOTH IRON BAR

Ellipsoid Height: 930.19

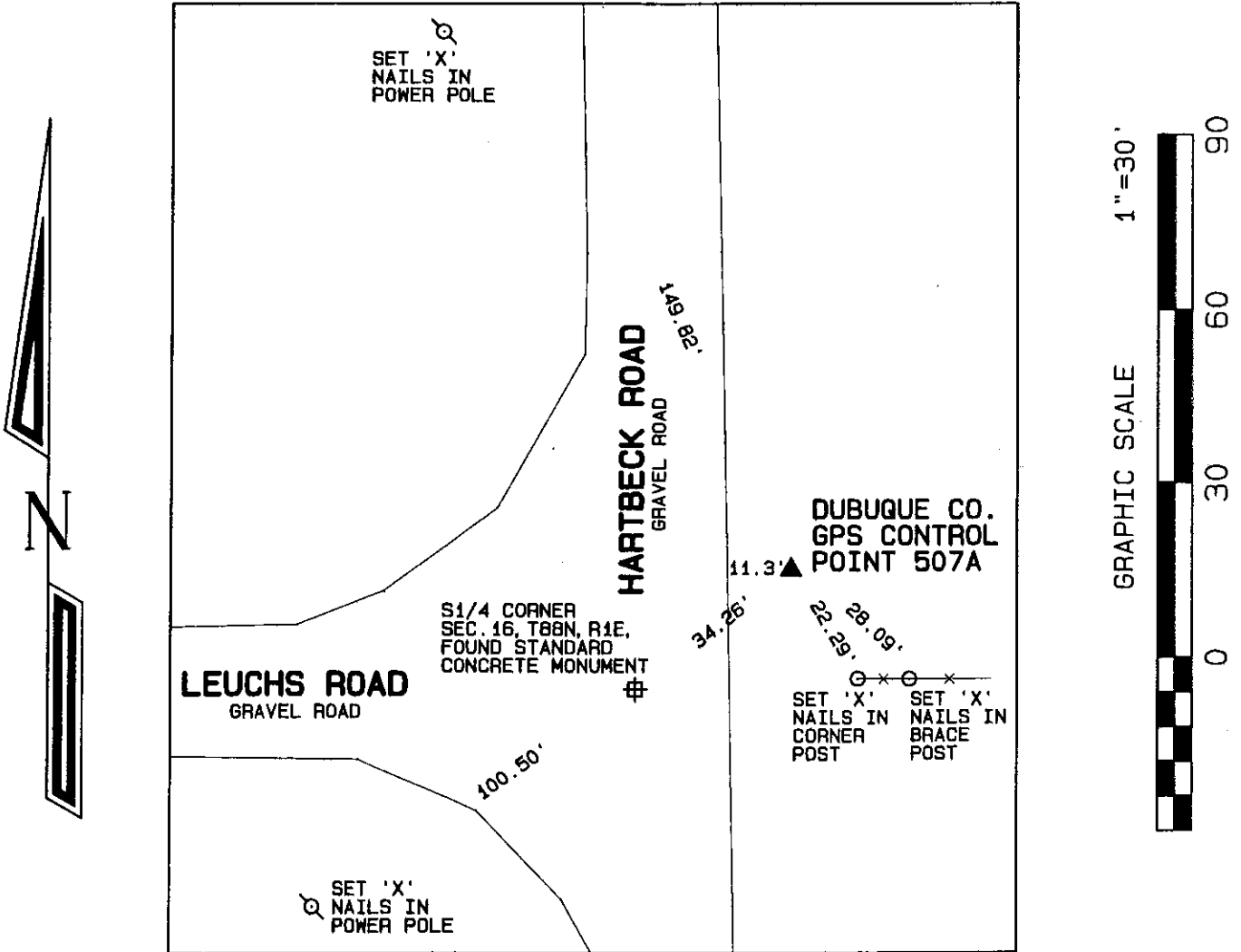
NORTHING: 3628586.95

Latitude: 42°25'34.07744"N

EASTING: 5605223.50

Longitude: 90°57'58.51811"W

PLAN - VIEW



**DUBUQUE COUNTY, IOWA
GPS CONTROL MONUMENT 508A**

IOWA NORTH ZONE
HORIZONTAL DATUM : NAD83 (1996)
VERTICAL DATUM: NAVD 1988 (GEOID2009 GRS80)
US SURVEY FEET

Designation: DUBUQUE CO. GPS CONTROL POINT 508A

Orthometric Height: 1089.32

Description: 5' LONG, 3/4" SMOOTH IRON BAR

Ellipsoid Height: 984.63

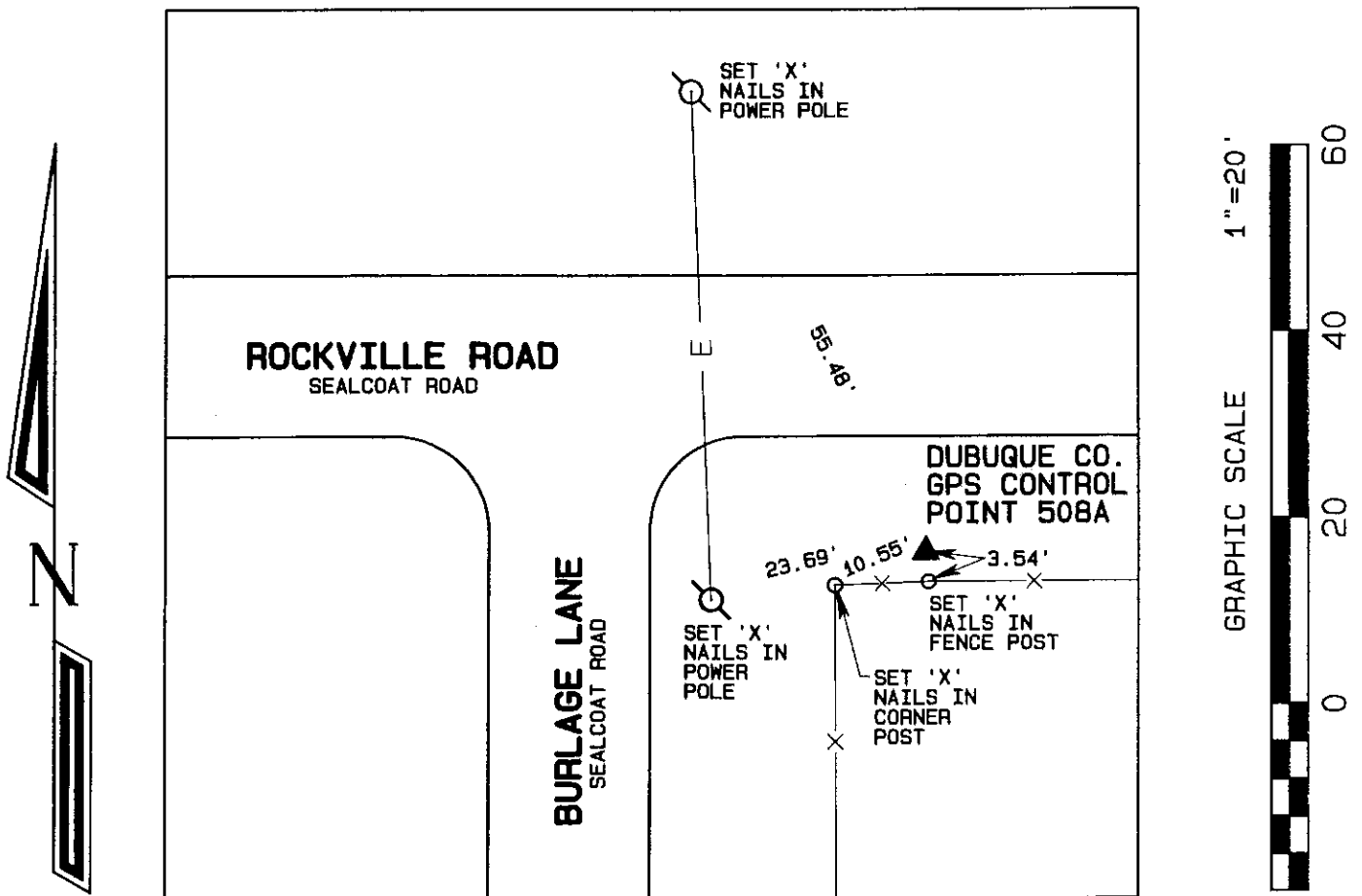
NORTHING: 3626423.88

Latitude: 42°25'21.02800"N

EASTING: 5576552.25

Longitude: 90°04'21.49174"W

PLAN - VIEW



**DUBUQUE COUNTY, IOWA
GPS CONTROL MONUMENT 509A**

IOWA NORTH ZONE
HORIZONTAL DATUM : NAD83 (1996)
VERTICAL DATUM: NAVD 1988 (GEOID2009 GRS80)
US SURVEY FEET

Designation: DUBUQUE CO. GPS CONTROL POINT 509A

Orthometric Height: 868.09

Description: 5' LONG, 3/4" SMOOTH IRON BAR

Ellipsoid Height: 762.95

NORTHING: 3595998.07

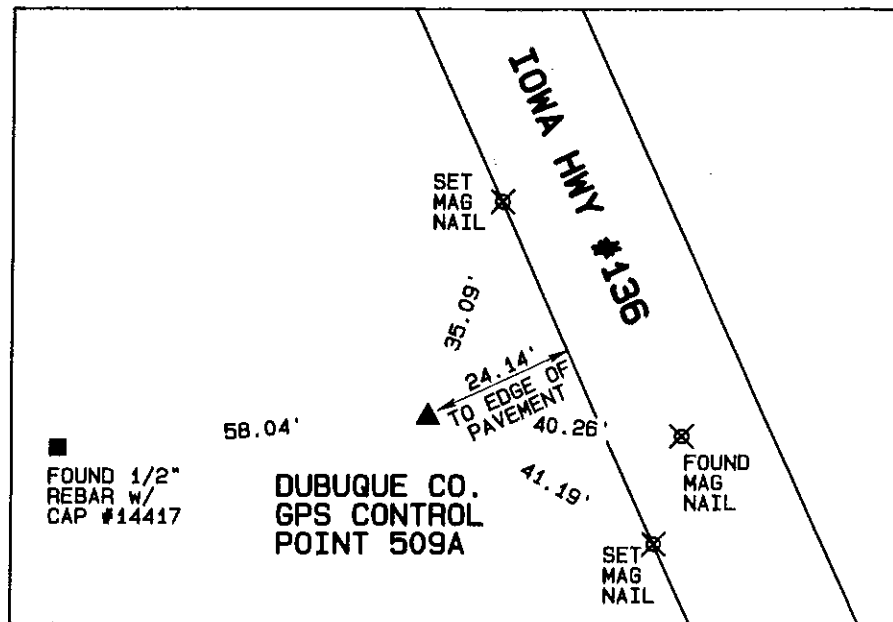
Latitude: 42°20'20.81573"N

EASTING: 5575738.77

Longitude: 91°04'43.95020"W



PLAN - VIEW



DUBUQUE COUNTY, IOWA GPS CONTROL MONUMENT 510A

IOWA NORTH ZONE
HORIZONTAL DATUM : NAD83 (1996)
VERTICAL DATUM: NAVD 1988 (GEOID2009 GRS80)
US SURVEY FEET

Designation: DUBUQUE CO. GPS CONTROL POINT 510A

Orthometric Height: 962.49

Description: 5' LONG, 3/4" SMOOTH IRON BAR

Ellipsoid Height: 857.16

NORTHING: 3579914.71

Latitude: 42°17'44.34489"N

EASTING: 5567382.99

Longitude: 91°06'41.21740"W

PLAN - VIEW

