

Emmet County, Iowa
Iowa North Zone (1401)
Horiz. Datum: NAD83(1996)
Vert. Datum: NAVD 1988
US Survey Feet
2006

Point Name: **100**

Designation: 06-100 (E1) Emmet Co GPS Control Point

Northing: **4002476.11sft** Easting: **4545740.83sft**

Orthometric Height: **1437.80sft** Ellipsoid Height: **1345.91sft** **Geoid03**

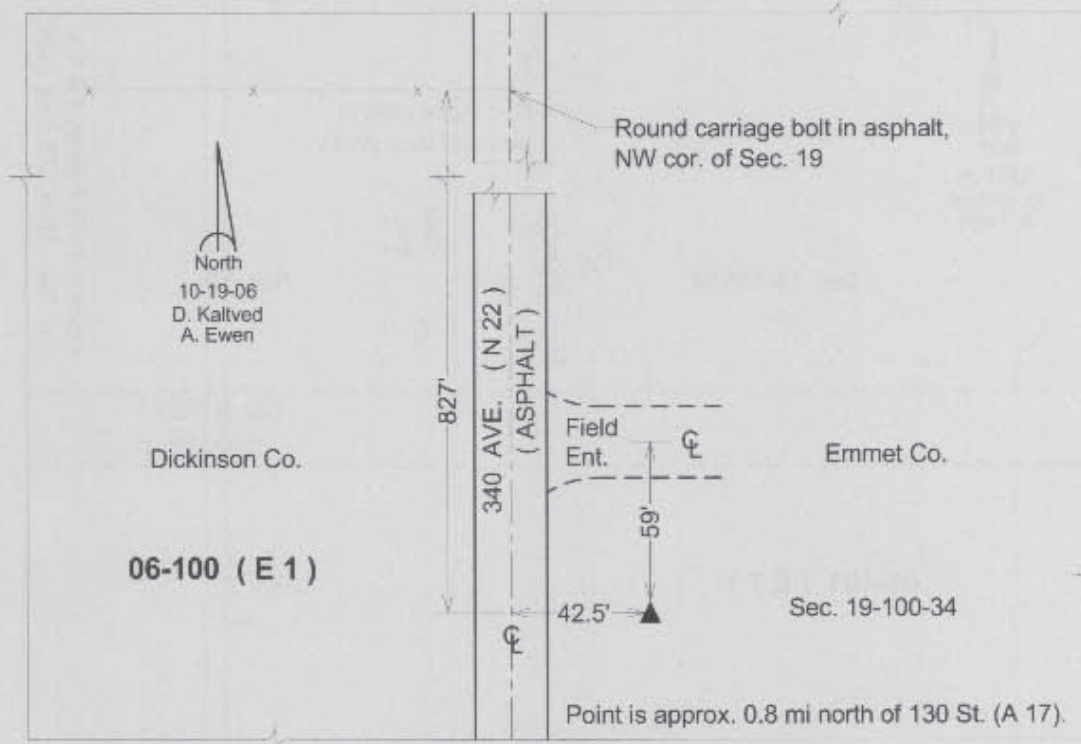
Latitude: **43°28'17.40356"N**

Longitude: **94°54'52.28398"W**

Mapping Angle: **-0°57'31"**

Combination Scale Factor: **0.99997965**

Monument Type: Berntsen Top Security Rod Monument with a 3-1/4" dia. domed survey cap and permanent magnet encased in a 5" dia. PVC pipe with a NGS style aluminum access cover.



This document was prepared by DCI and GBC for use by Emmet County, Iowa.