

Emmet County, Iowa
Iowa North Zone (1401)
Horiz. Datum: NAD83(1996)
Vert. Datum: NAVD 1988
US Survey Feet
2006

Point Name: **1001**

Designation: MN/DOT, NGS 1st order horizontal. PID: DF6933 Desig: PETERSBURG C

Northing: **4029176.28sft** Easting: **4546914.15sft**

Orthometric Height: **1406.99sft** Ellipsoid Height: **1315.65sft** **Geoid03**

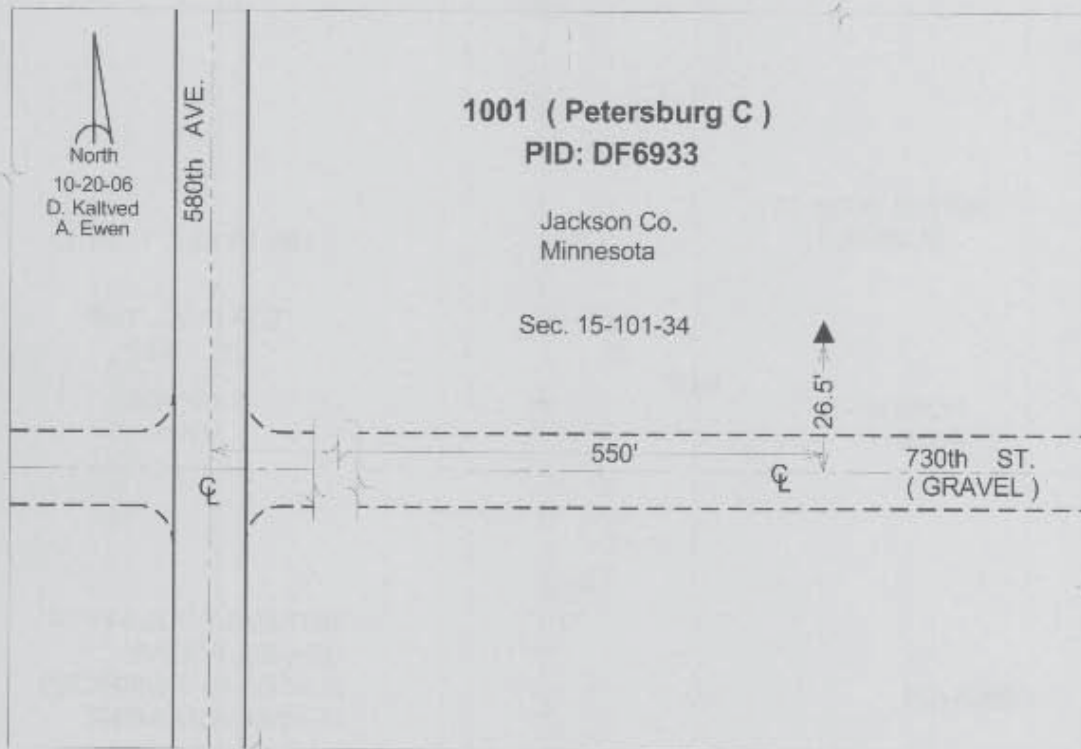
Latitude: **43°32'41.24508"N**

Longitude: **94°54'42.42172"W**

Mapping Angle: **-0°57'25"**

Combination Scale Factor: **0.99999992**

Monument Type: The station is a driven aluminum alloy rod with a survey disk stamped "PETERSBURG C 2001".



This document was prepared by DCI and GBC for use by Emmet County, Iowa.