

Emmet County, Iowa
Iowa North Zone (1401)
Horiz. Datum: NAD83(1996)
Vert. Datum: NAVD 1988
US Survey Feet
2006

Point Name: 1002

Designation: (A7) MN/DOT, NGS 1st horiz. PID: DH3946 Desig: PETERSBURG SE RESET

Northing: 4012969.99sft Easting: 4560764.29sft

Orthometric Height: 1387.40sft Ellipsoid Height: 1295.54sft **Geoid03**

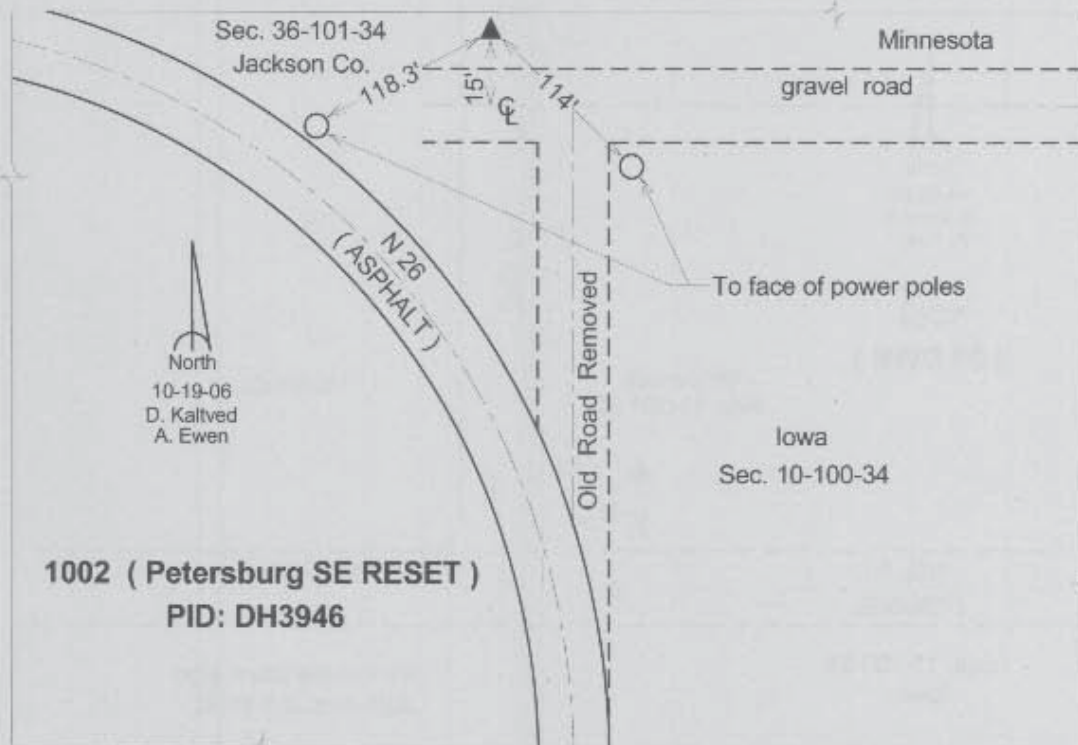
Latitude: 43°30'03.45908"N

Longitude: 94°51'30.87326"W

Mapping Angle: -0°55'15"

Combination Scale Factor: 0.99998942

Monument Type: The station is a driven aluminum alloy rod with a survey disk stamped "PETERSBURG SE 2001 RESET 2004".



This document was prepared by DCI and GBC for use by Emmet County, Iowa.