

Emmet County, Iowa
Iowa North Zone (1401)
Horiz. Datum: NAD83(1996)
Vert. Datum: NAVD 1988
US Survey Feet
2006

Point Name: **1005**

Designation: (A20) NGS 1st order horiz. control station. PID: DH3928 Designation: 31 DWB

Northing: **4012360.67sft** Easting: **4596052.48sft**

Orthometric Height: **1308.98sft** Ellipsoid Height: **1216.72sft** **Geoid03**

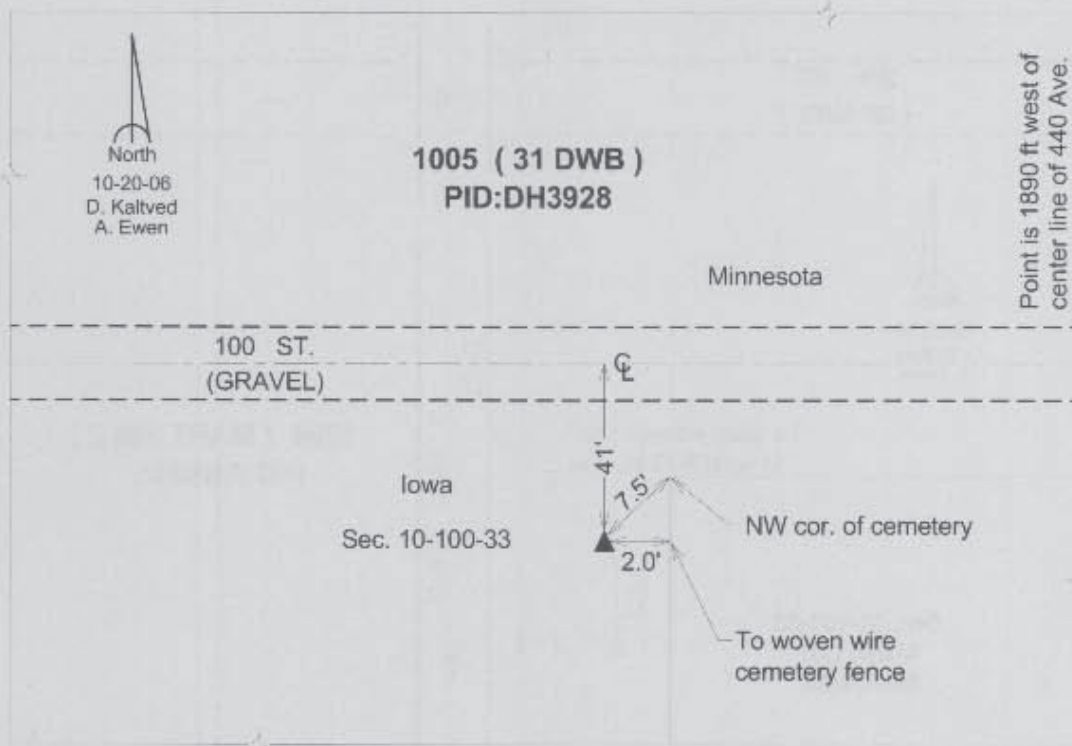
Latitude: **43°30'02.76839"N**

Longitude: **94°43'32.05324"W**

Mapping Angle: **-0°49'50"**

Combination Scale Factor: **0.99999313**

Monument Type: The station is a bench mark disk stamped "31 DWB 1967 1309" and set in the top a concrete monument.



This document was prepared by DCI and GBC for use by Emmet County, Iowa.