

Emmet County, Iowa
Iowa North Zone (1401)
Horiz. Datum: NAD83(1996)
Vert. Datum: NAVD 1988
US Survey Feet
2006

Point Name: 1006

Designation: (A26) MN/DOT, NGS 1st order horiz. PID: OP1088 Designation: CEYLON

Northing: 4012183.89sft Easting: 4611410.49sft

Orthometric Height: 1278.28sft Ellipsoid Height: 1185.94sft Geoid03

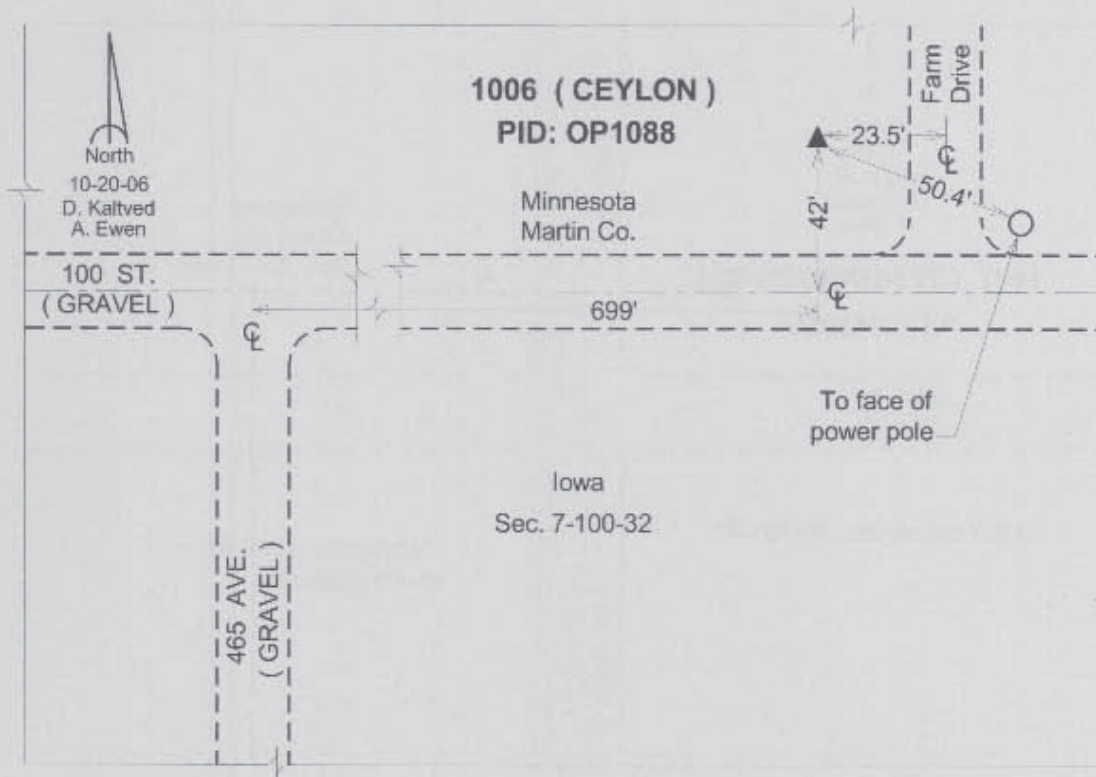
Latitude: 43°30'03.16958"N

Longitude: 94°40'03.68051"W

Mapping Angle: -0°47'29"

Combination Scale Factor: 0.99999463

Monument Type: The station is a triangulation station disk stamped "CEYLON 1934" and set in the top a concrete monument.



This document was prepared by DCI and GBC for use by Emmet County, Iowa.