

**Emmet County, Iowa**  
Iowa North Zone (1401)  
Horiz. Datum: NAD83(1996)  
Vert. Datum: NAVD 1988  
US Survey Feet  
**2006**

Point Name: **1007**

**Designation:** MN/DOT, NGS 1st order horiz. PID: DH3955 Designation: TENHASSEN 30

Northing: **4017227.40**sft Easting: **4625705.27**sft

Orthometric Height: **1244.91**sft Ellipsoid Height: **1152.62**sft **Geoid03**

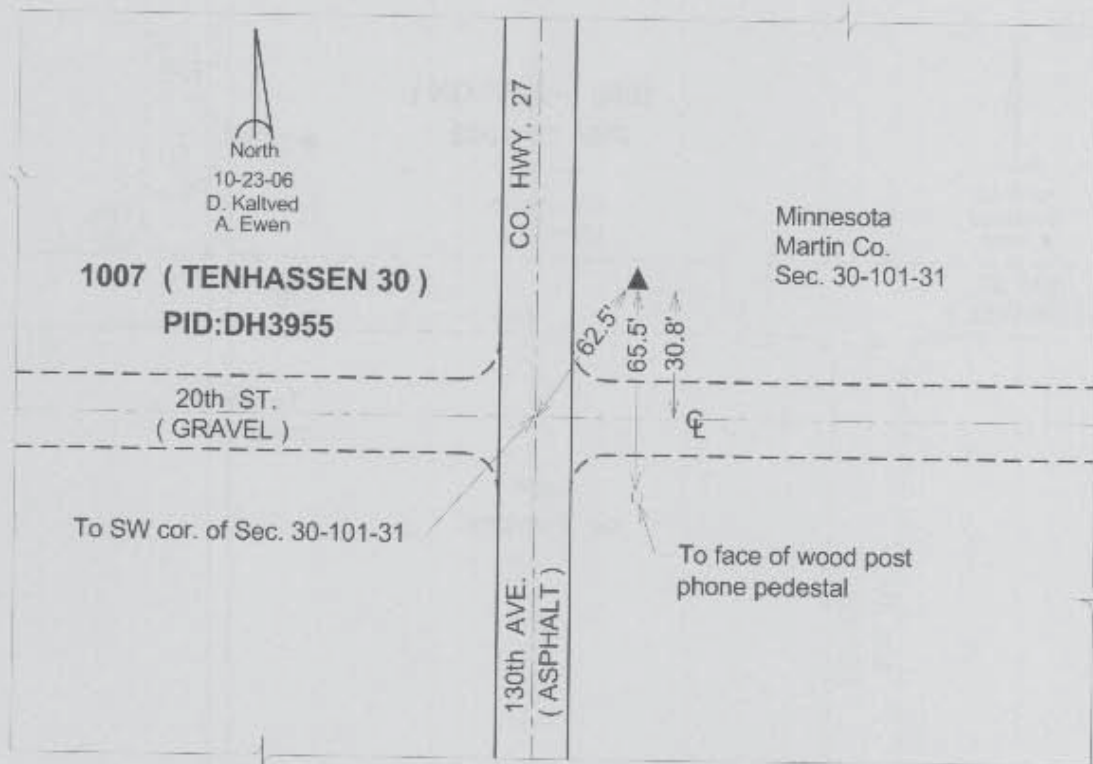
Latitude: **43°30'54.87868"N**

Longitude: **94°36'50.66386"W**

Mapping Angle: **-0°45'18"**

Combination Scale Factor: **0.99999991**

**Monument Type:** The station is a survey disk stamped "TENHASSEN 30 2004" and set in the top of a concrete post.



*This document was prepared by DCI and GBC for use by Emmet County, Iowa.*