

Emmet County, Iowa
Iowa North Zone (1401)
Horiz. Datum: NAD83(1996)
Vert. Datum: NAVD 1988
US Survey Feet
2006

Point Name: **1008**

Designation: MN/DOT, NGS CBN control station. PID: OP1351 Designation: 4603 M

Northing: **4014866.44**sft Easting: **4669803.07**sft

Orthometric Height: **1210.81**sft Ellipsoid Height: **1118.34**sft **Geoid03**

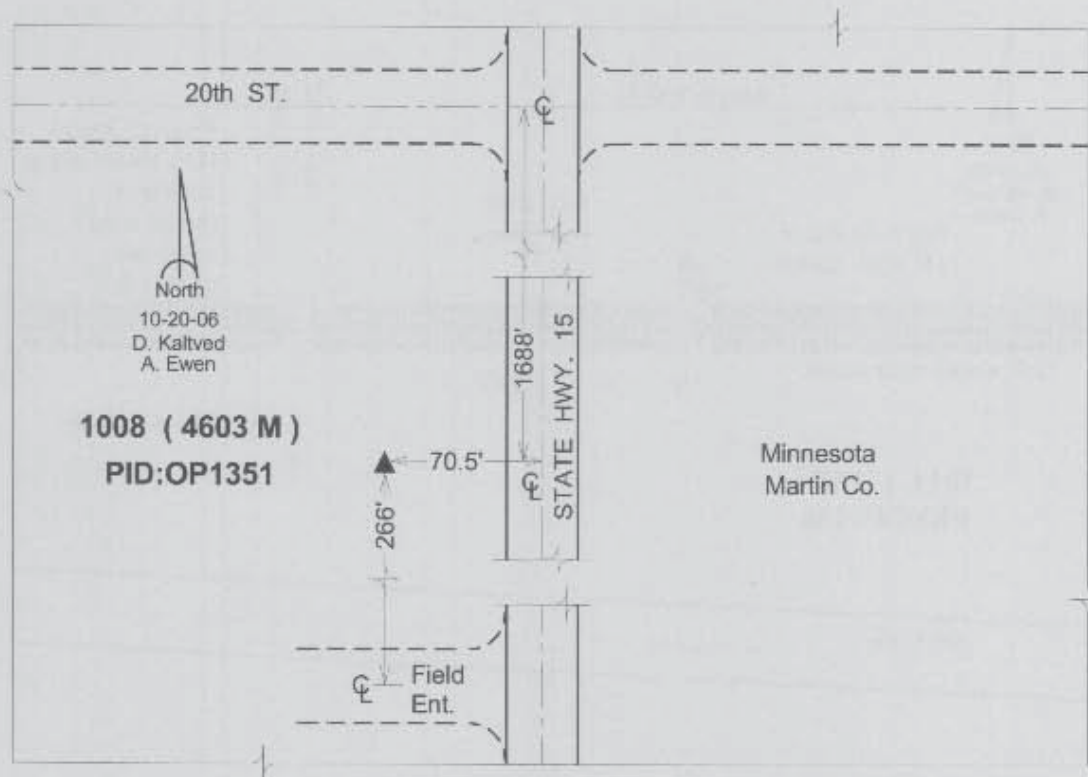
Latitude: **43°30'36.87476"N**

Longitude: **94°26'51.93390"W**

Mapping Angle: **-0°38'32"**

Combination Scale Factor: **1.00000025**

Monument Type: The station is a driven aluminum alloy rod with a survey disk stamped "4603 M 1986".



This document was prepared by DCI and GBC for use by Emmet County, Iowa.