

Emmet County, Iowa  
Iowa North Zone (1401)  
Horiz. Datum: NAD83(1996)  
Vert. Datum: NAVD 1988  
US Survey Feet  
2006

Point Name: 101

Designation: 06-101 (E7) Emmet Co GPS Control Point

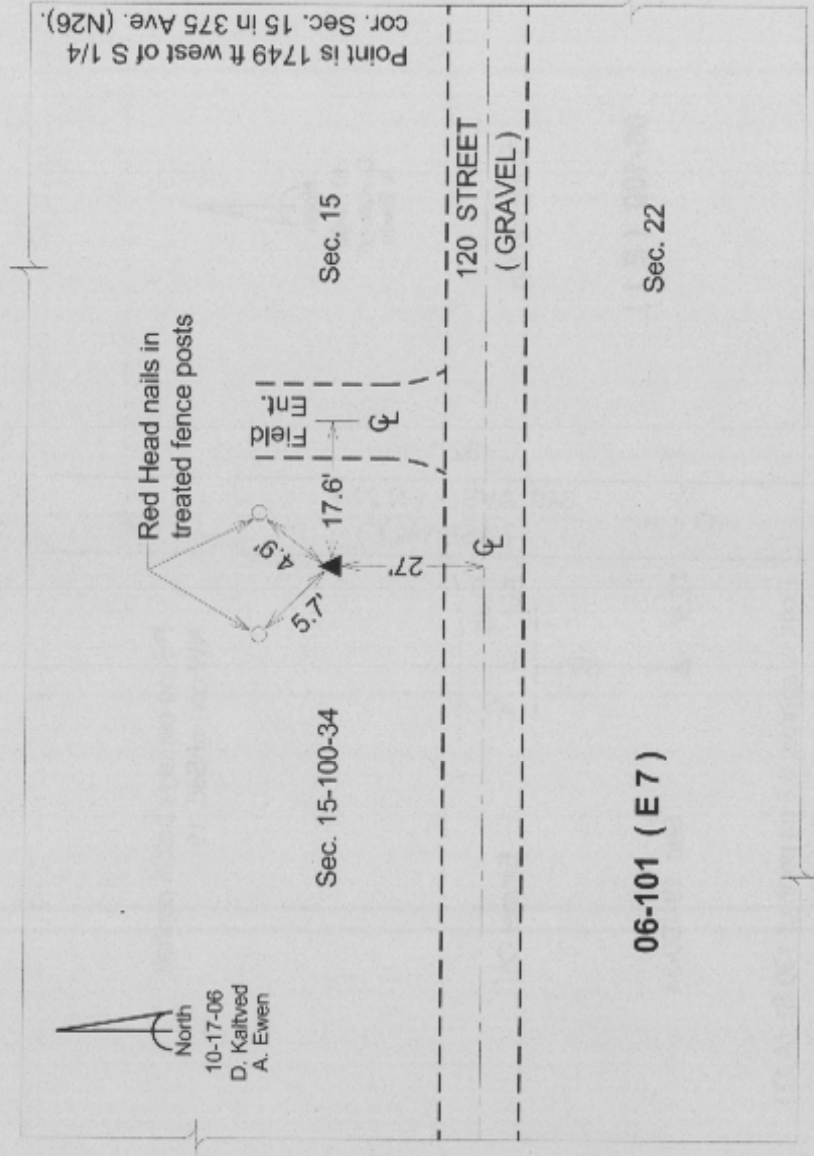
Northing: 4003199.73sft Easting: 4561773.61sft

Orthometric Height: 1364.16sft Ellipsoid Height: 1272.04sft Geoid03

Latitude: 43°28'27.14173"N Longitude: 94°51'15.05855"W

Mapping Angle: -0°55'04" Combination Scale Factor: 0.99998384

**Monument Type:** Berntsen Top Security Rod Monument with a 3-1/4" dia. domed survey cap and permanent magnet encased in a 5" dia. PVC pipe with a NGS style aluminum access cover.



*This document was prepared by DCI and GBC for use by Emmet County, Iowa.*