

Emmet County, Iowa
Iowa North Zone (1401)
Horiz. Datum: NAD83(1996)
Vert. Datum: NAVD 1988
US Survey Feet
2006

Point Name: 1011

Designation: NGS 2nd order vertical control station. PID: OP0160 Designation U 19

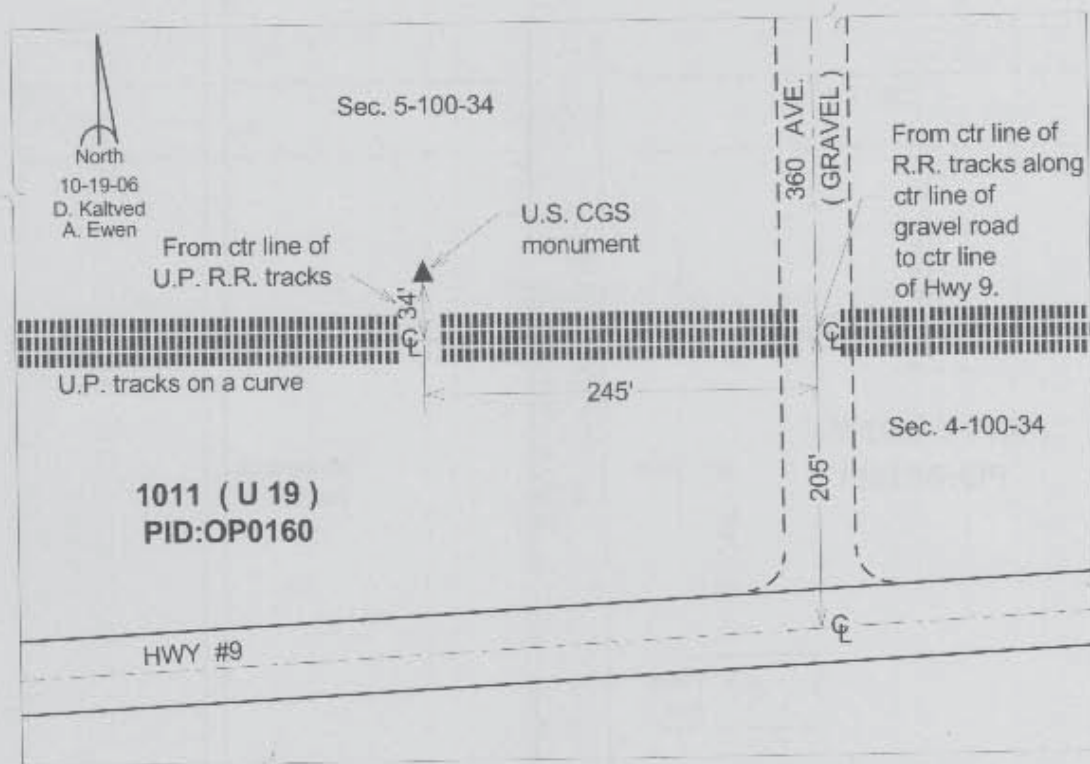
Northing: 3981986.43sft Easting: 4555247.49sft

Orthometric Height: 1443.03sft Ellipsoid Height: 1350.51sft Geoid03

Latitude: 43°24'56.62463"N Longitude: 94°52'38.86019"W

Mapping Angle: -0°56'01" Combination Scale Factor: 0.99996621

Monument Type: The station is a bench mark disk stamped "U 19 1934" and set in the top a concrete monument.



This document was prepared by DCI and GBC for use by Emmet County, Iowa.