

Emmet County, Iowa
Iowa North Zone (1401)
Horiz. Datum: NAD83(1996)
Vert. Datum: NAVD 1988
US Survey Feet
2006

Point Name: **1012**

Designation: NGS 2nd order vertical control station. PID: OP0154 Designation P 19

Northing: **3956836.46sft** Easting: **4576342.99sft**

Orthometric Height: **1271.36sft** Ellipsoid Height: **1178.13sft** **Geoid03**

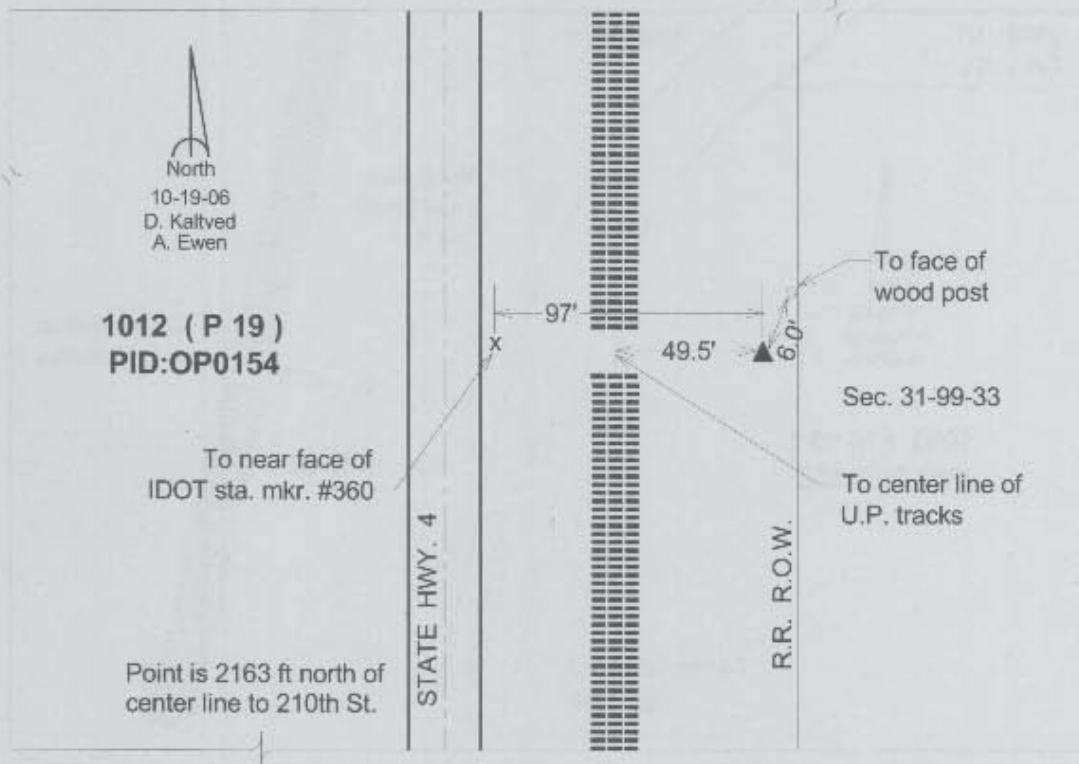
Latitude: **43°20'51.56244"N**

Longitude: **94°47'47.86386"W**

Mapping Angle: **-0°52'44"**

Combination Scale Factor: **0.99995959**

Monument Type: The station is a bench mark disk stamped "P 19 1934" and set in the top a concrete monument.



This document was prepared by DCI and GBC for use by Emmet County, Iowa.