

Emmet County, Iowa
Iowa North Zone (1401)
Horiz. Datum: NAD83(1996)
Vert. Datum: NAVD 1988
US Survey Feet
2006

Point Name: **1013**

Designation: NGS IAharn and 2nd order vertical. PID: OP0152 Designation: M 19

Northing: **3943308.67**sft Easting: **4577213.67**sft

Orthometric Height: **1272.27**sft Ellipsoid Height: **1178.80**sft **Geoid03**

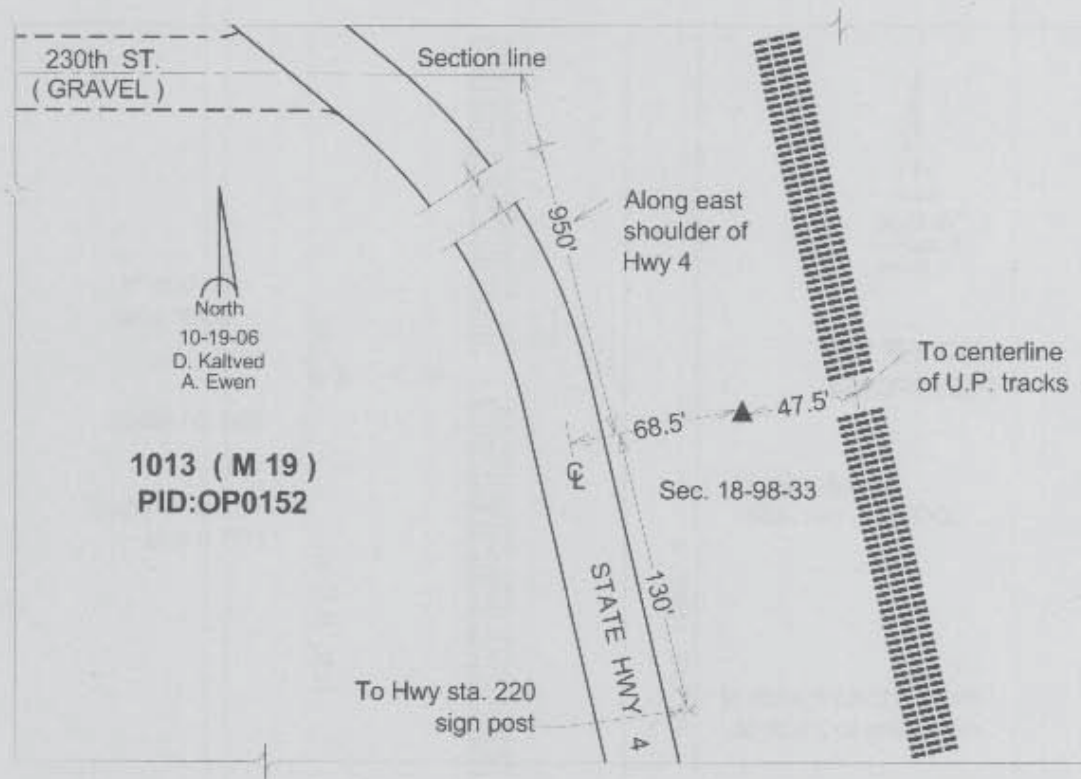
Latitude: **43°18'38.10275"N**

Longitude: **94°47'33.28316"W**

Mapping Angle: **-0°52'34"**

Combination Scale Factor: **0.99995208**

Monument Type: The station is a bench mark disk stamped "M 19 1934" and set in the top a concrete monument.



This document was prepared by DCI and GBC for use by Emmet County, Iowa.