

Emmet County, Iowa
Iowa North Zone (1401)
Horiz. Datum: NAD83(1996)
Vert. Datum: NAVD 1988
US Survey Feet
2006

Point Name: 103

Designation: 06-103 (R7) Emmet Co GPS Control Point

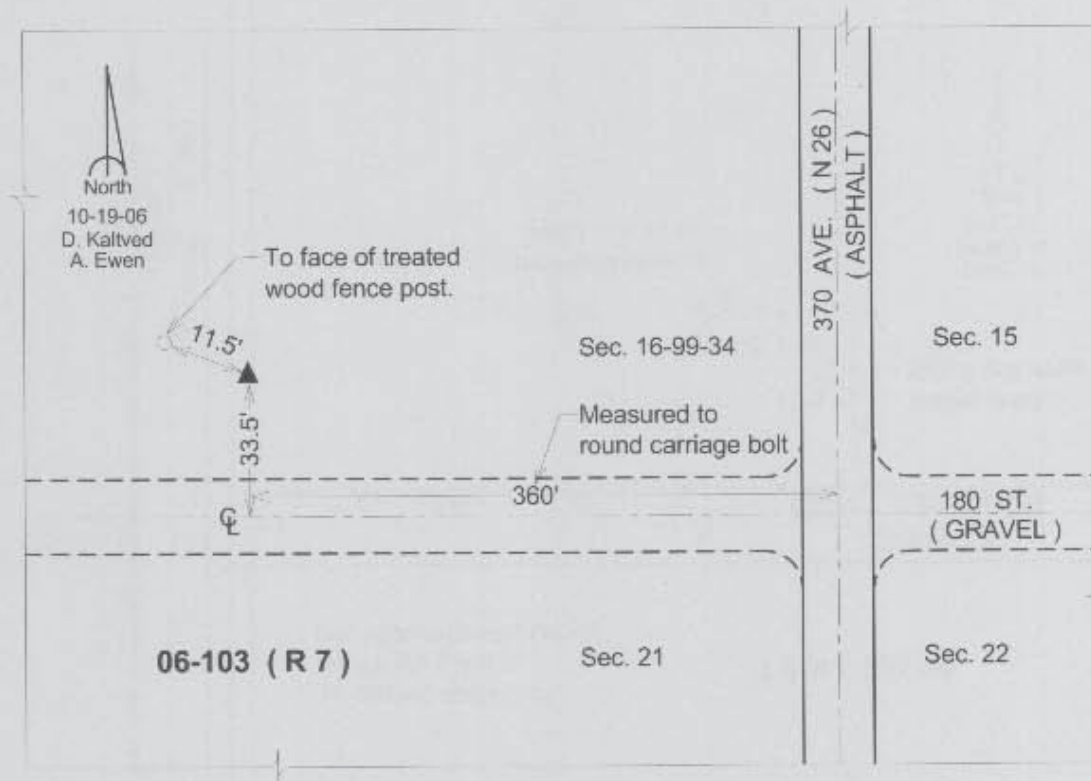
Northing: 3970831.92sft Easting: 4560231.03sft

Orthometric Height: 1446.95sft Ellipsoid Height: 1354.14sft Geoid03

Latitude: 43°23'07.27103"N Longitude: 94°51'28.92386"W

Mapping Angle: -0°55'13" Combination Scale Factor: 0.99995924

Monument Type: Berntsen Top Security Rod Monument with a 3-1/4" dia. domed survey cap and permanent magnet encased in a 5" dia. PVC pipe with a NGS style aluminum access cover.



This document was prepared by DCI and GBC for use by Emmet County, Iowa.