

**Emmet County, Iowa**  
Iowa North Zone (1401)  
Horiz. Datum: NAD83(1996)  
Vert. Datum: NAVD 1988  
US Survey Feet  
**2006**

Point Name: **104**

**Designation:** 06-104 (X7) Emmet Co GPS Control Point

Northing: **3955749.95**sft Easting: **4560480.88**sft

Orthometric Height: **1439.88**sft Ellipsoid Height: **1346.76**sft **Geoid03**

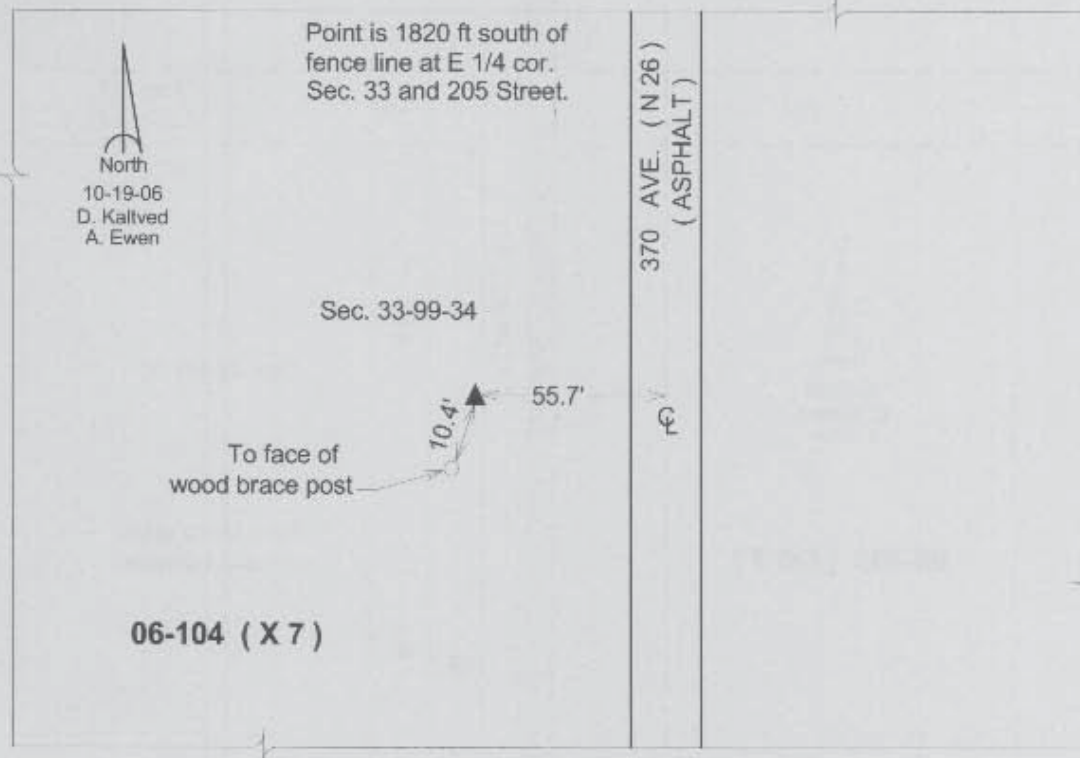
Latitude: **43°20'38.37502"N**

Longitude: **94°51'22.26487"W**

Mapping Angle: **-0°55'09"**

Combination Scale Factor: **0.99995079**

**Monument Type:** Berntsen Top Security Rod Monument with a 3-1/4" dia. domed survey cap and permanent magnet encased in a 5" dia. PVC pipe with a NGS style aluminum access cover.



*This document was prepared by DCI and GBC for use by Emmet County, Iowa.*