

Emmet County, Iowa  
Iowa North Zone (1401)  
Horiz. Datum: NAD83(1996)  
Vert. Datum: NAVD 1988  
US Survey Feet  
2006

Point Name: 105

Designation: 06-105 (DD7) Emmet Co GPS Control Point

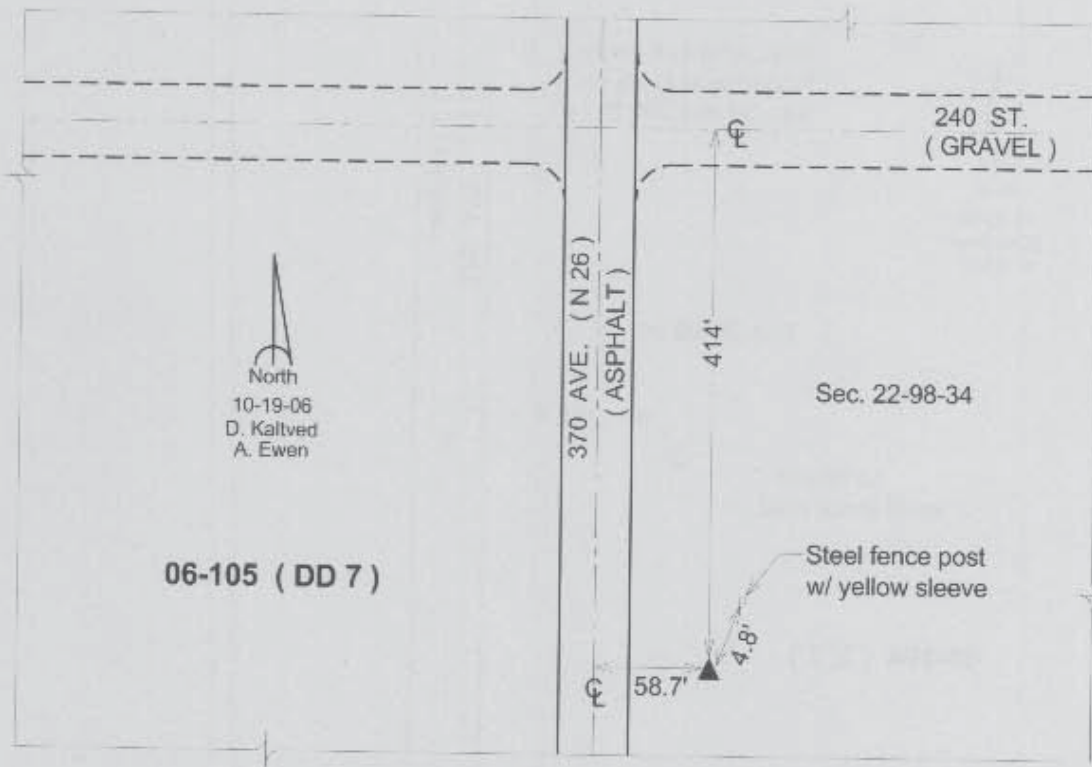
Northing: 3938909.01sft Easting: 4560208.52sft

Orthometric Height: 1478.84sft Ellipsoid Height: 1385.42sft Geoid03

Latitude: 43°17'52.02349"N Longitude: 94°51'22.29416"W

Mapping Angle: -0°55'09" Combination Scale Factor: 0.99993974

**Monument Type:** Berntsen Top Security Rod Monument with a 3-1/4" dia. domed survey cap and permanent magnet encased in a 5" dia. PVC pipe with a NGS style aluminum access cover.



*This document was prepared by DCI and GBC for use by Emmet County, Iowa.*