

Emmet County, Iowa
Iowa North Zone (1401)
Horiz. Datum: NAD83(1996)
Vert. Datum: NAVD 1988
US Survey Feet
2006

Point Name: **106**

Designation: 06-106 (A14) Emmet Co GPS Control Point

Northing: **4012647.92sft** Easting: **4579980.27sft**

Orthometric Height: **1348.81sft** Ellipsoid Height: **1256.68sft** **Geoid03**

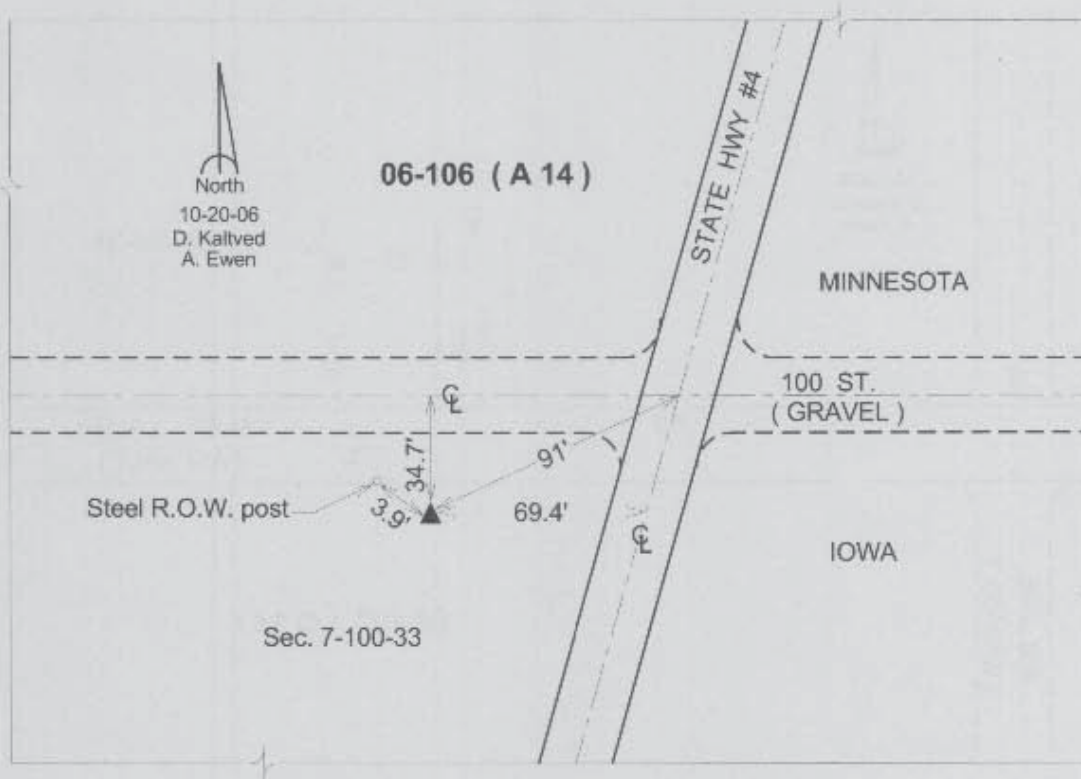
Latitude: **43°30'03.24704"N**

Longitude: **94°47'10.13629"W**

Mapping Angle: **-0°52'18"**

Combination Scale Factor: **0.99999126**

Monument Type: Berntsen Top Security Rod Monument with a 3-1/4" dia. domed survey cap and permanent magnet encased in a 5" dia. PVC pipe with a NGS style aluminum access cover.



This document was prepared by DCI and GBC for use by Emmet County, Iowa.