

Emmet County, Iowa
Iowa North Zone (1401)
Horiz. Datum: NAD83(1996)
Vert. Datum: NAVD 1988
US Survey Feet
2006

Point Name: **107**

Designation: 06-107 (G14) Emmet Co GPS Control Point

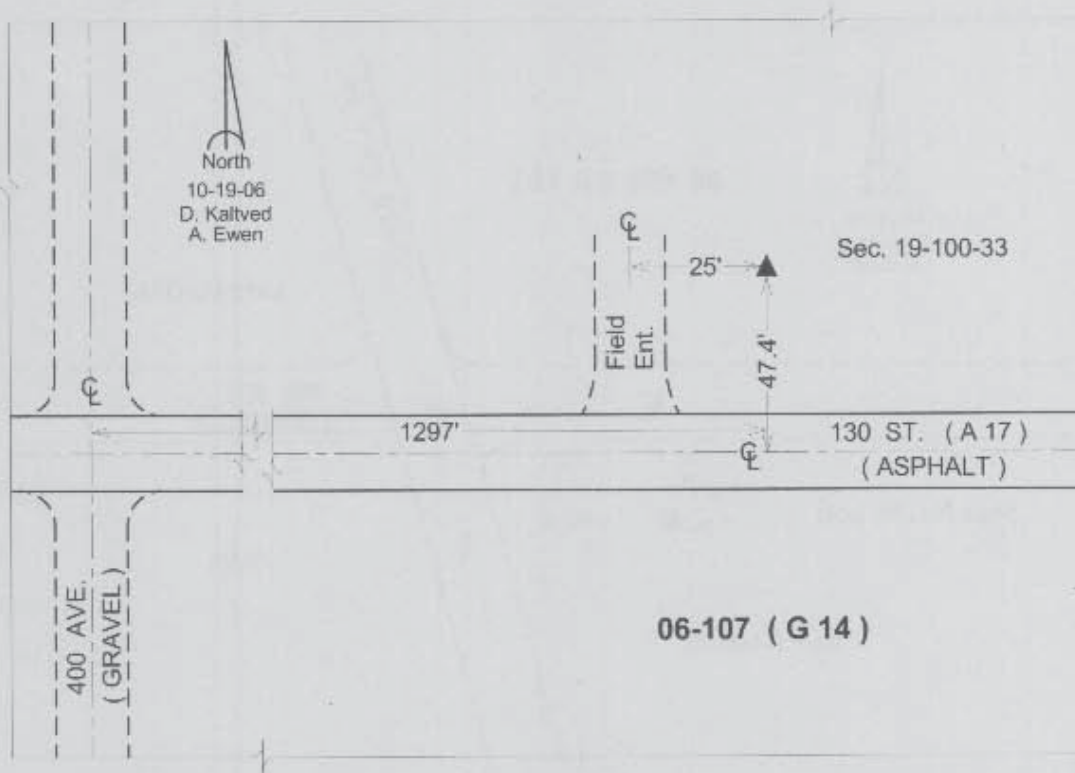
Northing: **3997696.28sft** Easting: **4577978.95sft**

Orthometric Height: **1355.50sft** Ellipsoid Height: **1263.08sft** **Geoid03**

Latitude: **43°27'35.30209"N** Longitude: **94°47'34.18268"W**

Mapping Angle: **-0°52'34"** Combination Scale Factor: **0.99998075**

Monument Type: Berntsen Top Security Rod Monument with a 3-1/4" dia. domed survey cap and permanent magnet encased in a 5" dia. PVC pipe with a NGS style aluminum access cover.



This document was prepared by DCI and GBC for use by Emmet County, Iowa.