

Emmet County, Iowa
Iowa North Zone (1401)
Horiz. Datum: NAD83(1996)
Vert. Datum: NAVD 1988
US Survey Feet
2006

Point Name: **108**

Designation: 06-108 (K15) Emmet Co GPS Control Point

Northing: **3986980.80sft** Easting: **4581110.25sft**

Orthometric Height: **1316.53sft** Ellipsoid Height: **1223.86sft** **Geoid03**

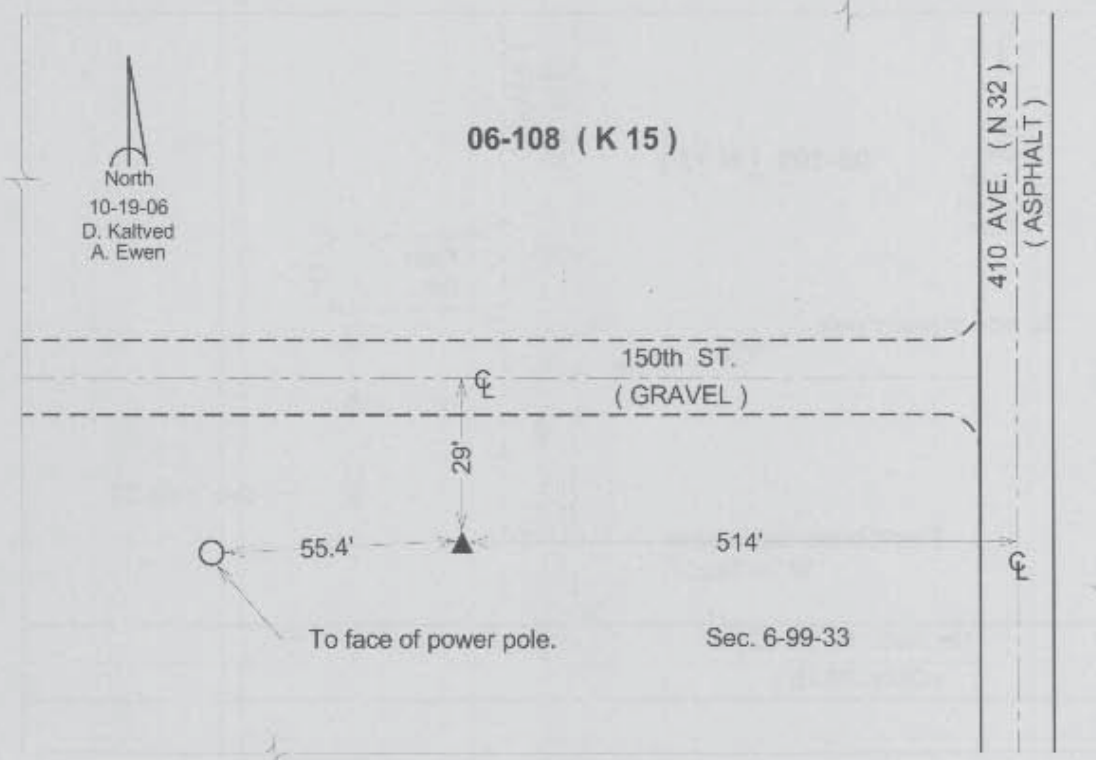
Latitude: **43°25'49.95857"N**

Longitude: **94°46'49.53368"W**

Mapping Angle: **-0°52'04"**

Combination Scale Factor: **0.99997567**

Monument Type: Berntsen Top Security Rod Monument with a 3-1/4" dia. domed survey cap and permanent magnet encased in a 5" dia. PVC pipe with a NGS style aluminum access cover.



This document was prepared by DCI and GBC for use by Emmet County, Iowa.