

Emmet County, Iowa
Iowa North Zone (1401)
Horiz. Datum: NAD83(1996)
Vert. Datum: NAVD 1988
US Survey Feet
2006

Point Name: **109**

Designation: 06-109 (N13) Emmet Co GPS Control Point

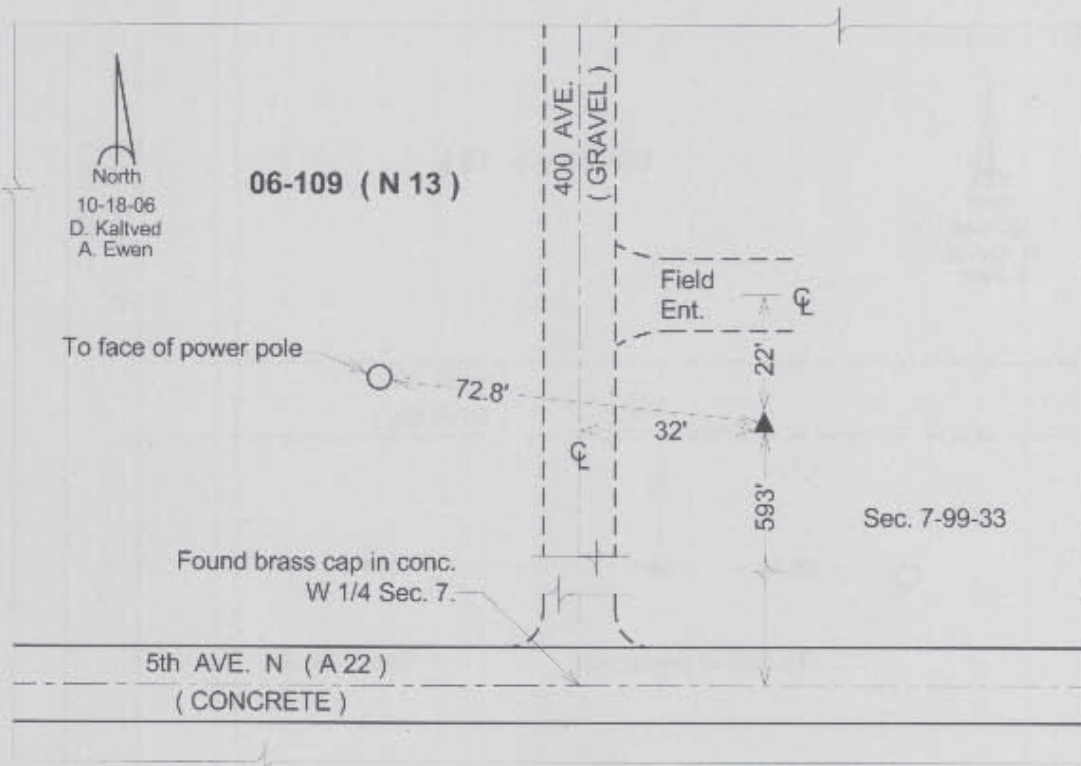
Northing: **3978884.84sft** Easting: **4576607.39sft**

Orthometric Height: **1328.86sft** Ellipsoid Height: **1236.05sft** **Geoid03**

Latitude: **43°24'29.33323"N** Longitude: **94°47'48.86351"W**

Mapping Angle: **-0°52'44"** Combination Scale Factor: **0.99996995**

Monument Type: Berntsen Top Security Rod Monument with a 3-1/4" dia. domed survey cap and permanent magnet encased in a 5" dia. PVC pipe with a NGS style aluminum access cover.



This document was prepared by DCI and GBC for use by Emmet County, Iowa.