

Emmet County, Iowa
Iowa North Zone (1401)
Horiz. Datum: NAD83(1996)
Vert. Datum: NAVD 1988
US Survey Feet
2006

Point Name: **110**

Designation: 06-110 (S15) Emmet Co GPS Control Point

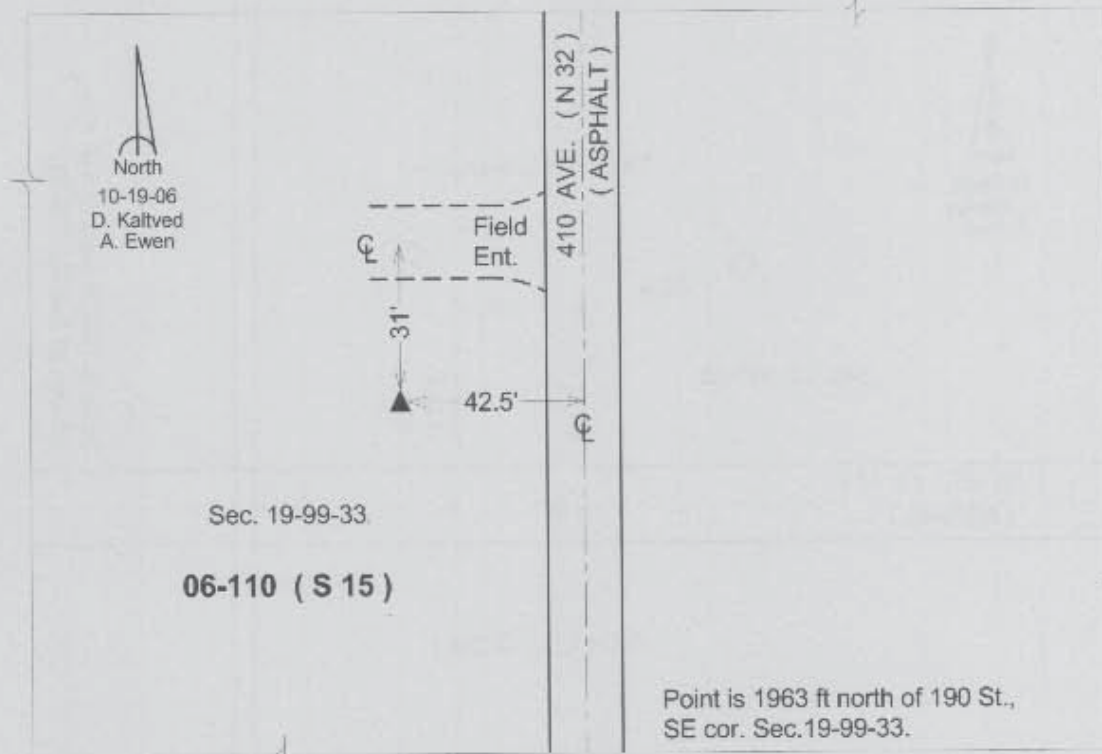
Northing: **3967044.95**sft Easting: **4581488.66**sft

Orthometric Height: **1311.27**sft Ellipsoid Height: **1218.21**sft **Geoid03**

Latitude: **43°22'33.14725"N** Longitude: **94°46'40.32293"W**

Mapping Angle: **-0°51'58"** Combination Scale Factor: **0.99996366**

Monument Type: Berntsen Top Security Rod Monument with a 3-1/4" dia. domed survey cap and permanent magnet encased in a 5" dia. PVC pipe with a NGS style aluminum access cover.



This document was prepared by DCI and GBC for use by Emmet County, Iowa.