

Emmet County, Iowa
Iowa North Zone (1401)
Horiz. Datum: NAD83(1996)
Vert. Datum: NAVD 1988
US Survey Feet
2006

Point Name: 111

Designation: 06-111 (G20) Emmet Co GPS Control Point

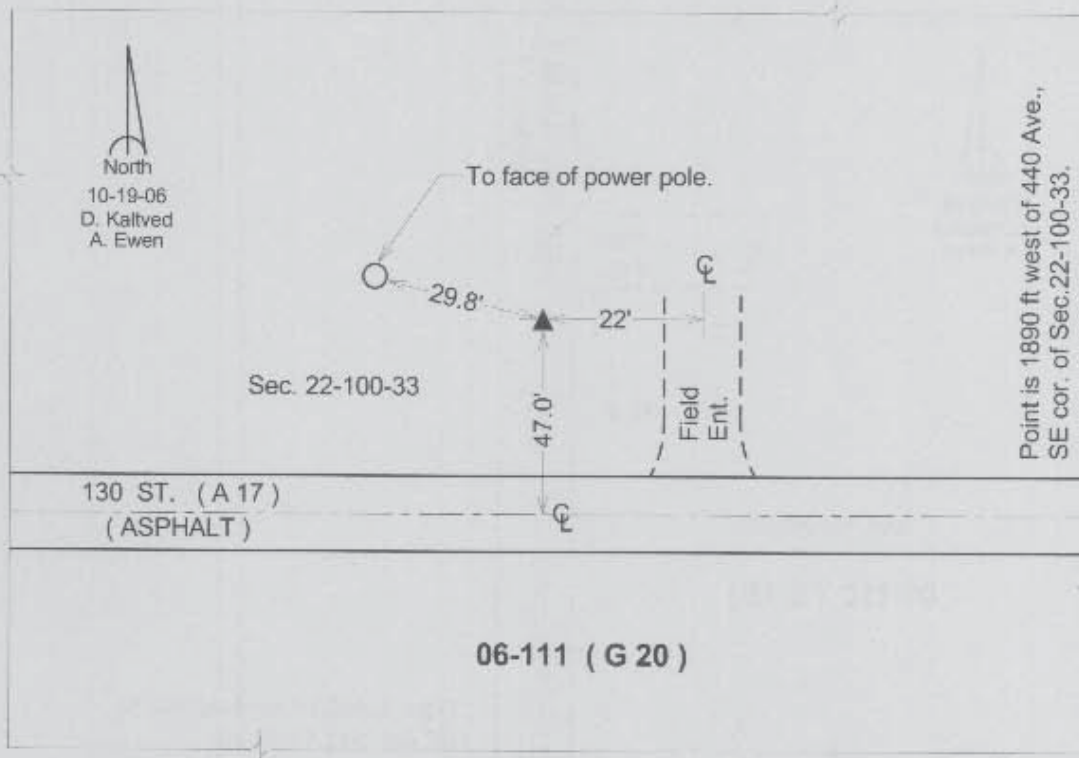
Northing: 3997369.00sft Easting: 4595865.01sft

Orthometric Height: 1326.39sft Ellipsoid Height: 1233.85sft Geoid03

Latitude: 43°27'34.70113"N Longitude: 94°43'31.64814"W

Mapping Angle: -0°49'50" Combination Scale Factor: 0.99998210

Monument Type: Berntsen Top Security Rod Monument with a 3-1/4" dia. domed survey cap and permanent magnet encased in a 5" dia. PVC pipe with a NGS style aluminum access cover.



This document was prepared by DCI and GBC for use by Emmet County, Iowa.