

Emmet County, Iowa  
Iowa North Zone (1401)  
Horiz. Datum: NAD83(1996)  
Vert. Datum: NAVD 1988  
US Survey Feet  
2006

Point Name: 112

**Designation:** 06-112 (R20) Emmet Co GPS Control Point

Northing: 3970122.07sft Easting: 4596786.39sft

Orthometric Height: 1317.11sft Ellipsoid Height: 1224.07sft **Geoid03**

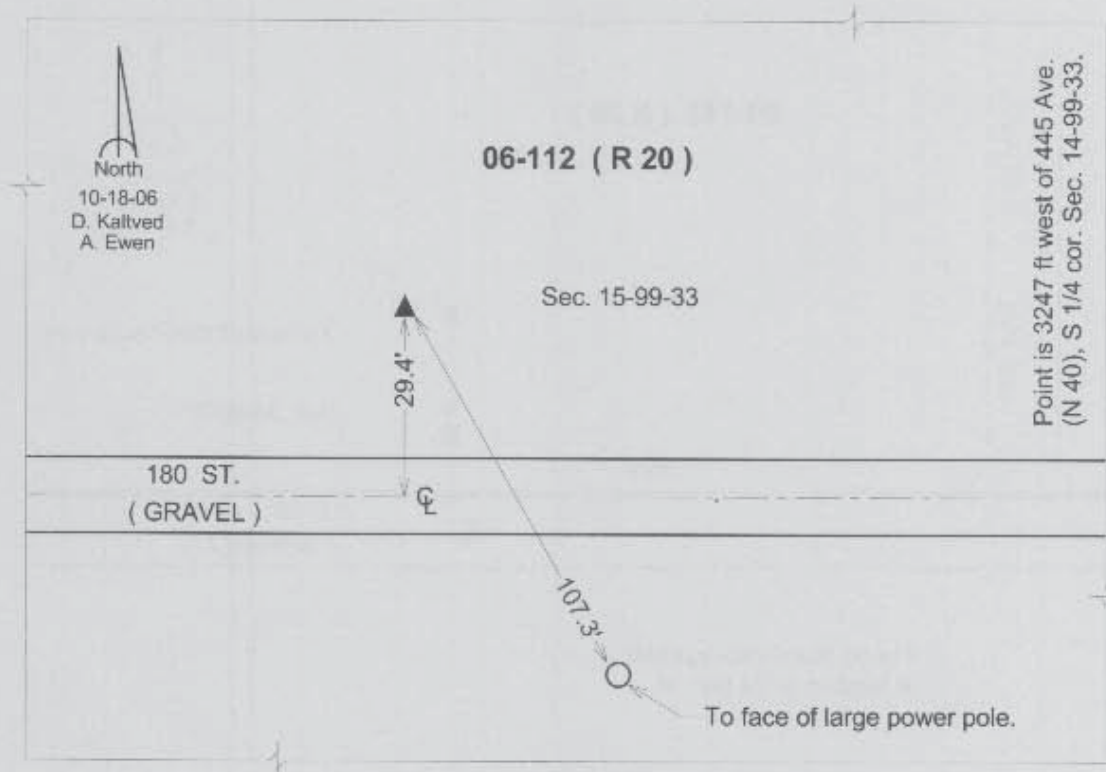
Latitude: 43°23'05.76688"N

Longitude: 94°43'13.82456"W

Mapping Angle: -0°49'38"

Combination Scale Factor: 0.99996535

**Monument Type:** Berntsen Top Security Rod Monument with a 3-1/4" dia. domed survey cap and permanent magnet encased in a 5" dia. PVC pipe with a NGS style aluminum access cover.



*This document was prepared by DCI and GBC for use by Emmet County, Iowa.*