

Emmet County, Iowa
Iowa North Zone (1401)
Horiz. Datum: NAD83(1996)
Vert. Datum: NAVD 1988
US Survey Feet
2006

Point Name: **114**

Designation: 06-114 (DD20) Emmet Co GPS Control Point

Northing: **3938792.37sft** Easting: **4592567.81sft**

Orthometric Height: **1308.59sft** Ellipsoid Height: **1215.04sft**

Geoid03

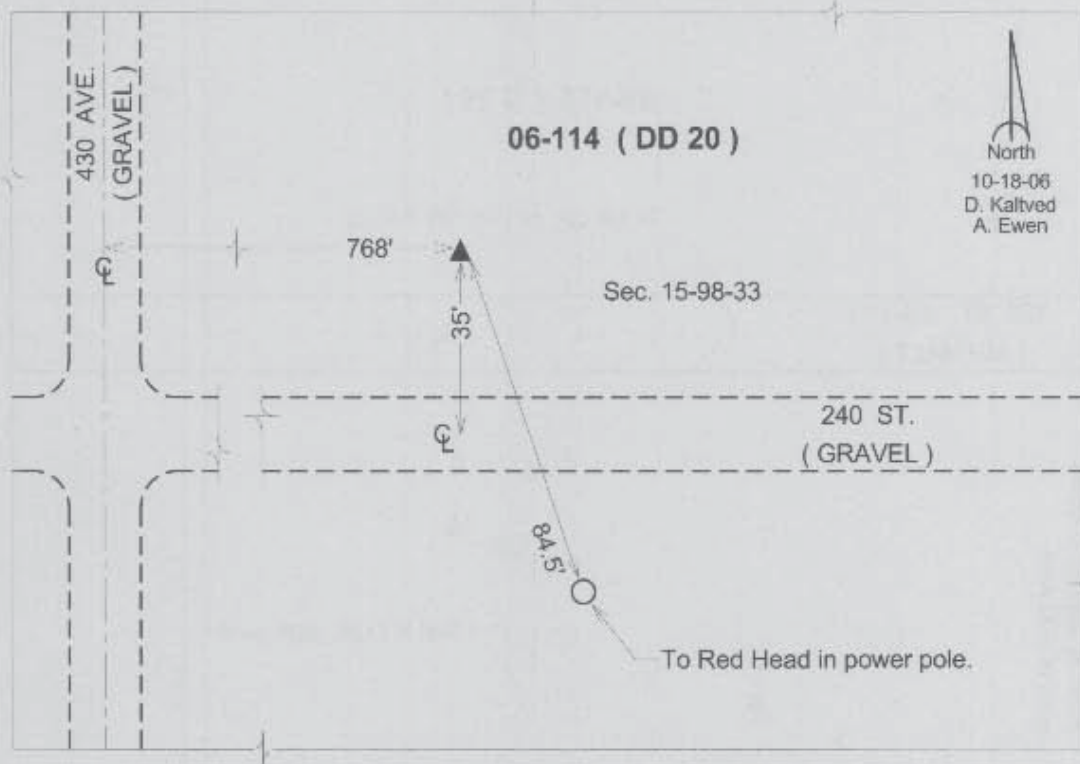
Latitude: **43°17'55.76878"N**

Longitude: **94°44'04.74806"W**

Mapping Angle: **-0°50'12"**

Combination Scale Factor: **0.99994806**

Monument Type: Berntsen Top Security Rod Monument with a 3-1/4" dia. domed survey cap and permanent magnet encased in a 5" dia. PVC pipe with a NGS style aluminum access cover.



This document was prepared by DCI and GBC for use by Emmet County, Iowa.