

Emmet County, Iowa
Iowa North Zone (1401)
Horiz. Datum: NAD83(1996)
Vert. Datum: NAVD 1988
US Survey Feet
2006

Point Name: 115

Designation: 06-115 (G26) Emmet Co GPS Control Point

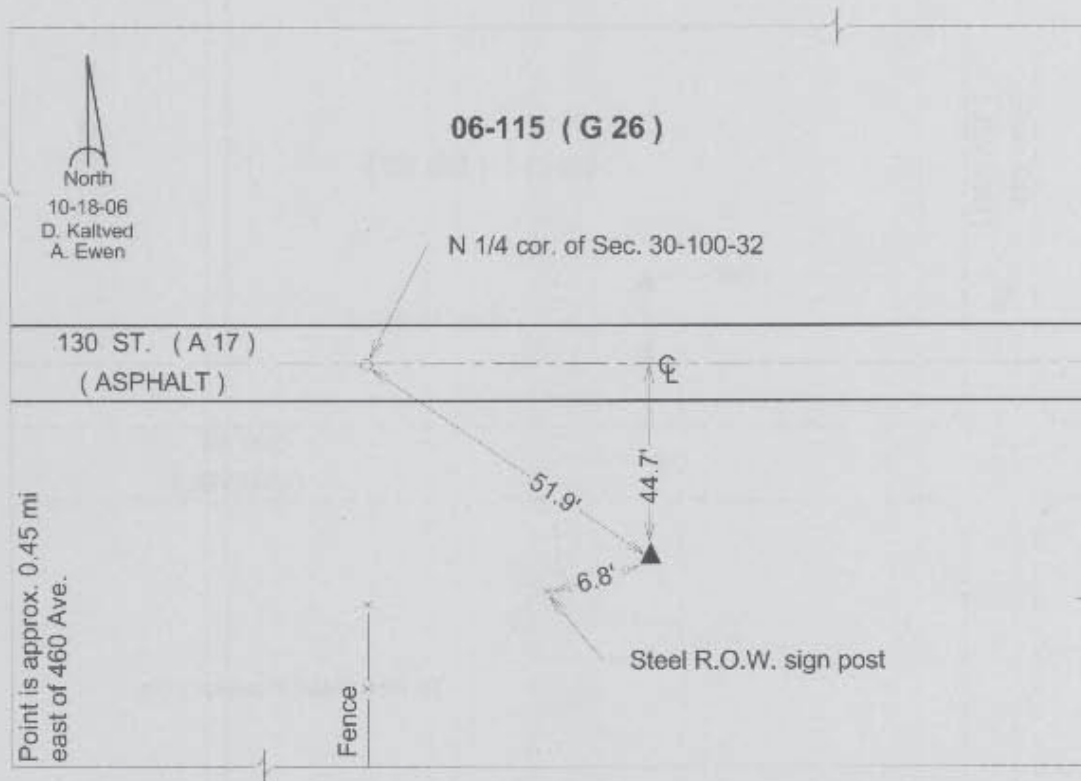
Northing: 3997006.28sft Easting: 4610665.65sft

Orthometric Height: 1291.17sft Ellipsoid Height: 1198.58sft **Geoid03**

Latitude: 43°27'33.18989"N Longitude: 94°40'10.93568"W

Mapping Angle: -0°47'34" Combination Scale Factor: 0.99998369

Monument Type: Berntsen Top Security Rod Monument with a 3-1/4" dia. domed survey cap and permanent magnet encased in a 5" dia. PVC pipe with a NGS style aluminum access cover.



This document was prepared by DCI and GBC for use by Emmet County, Iowa.