

**Emmet County, Iowa**  
Iowa North Zone (1401)  
Horiz. Datum: NAD83(1996)  
Vert. Datum: NAVD 1988  
US Survey Feet  
**2006**

Point Name: **116**

**Designation:** 06-116 (K23) Emmet Co GPS Control Point

Northing: **3986706.43**sft Easting: **4602518.88**sft

Orthometric Height: **1307.79**sft Ellipsoid Height: **1215.04**sft **Geoid03**

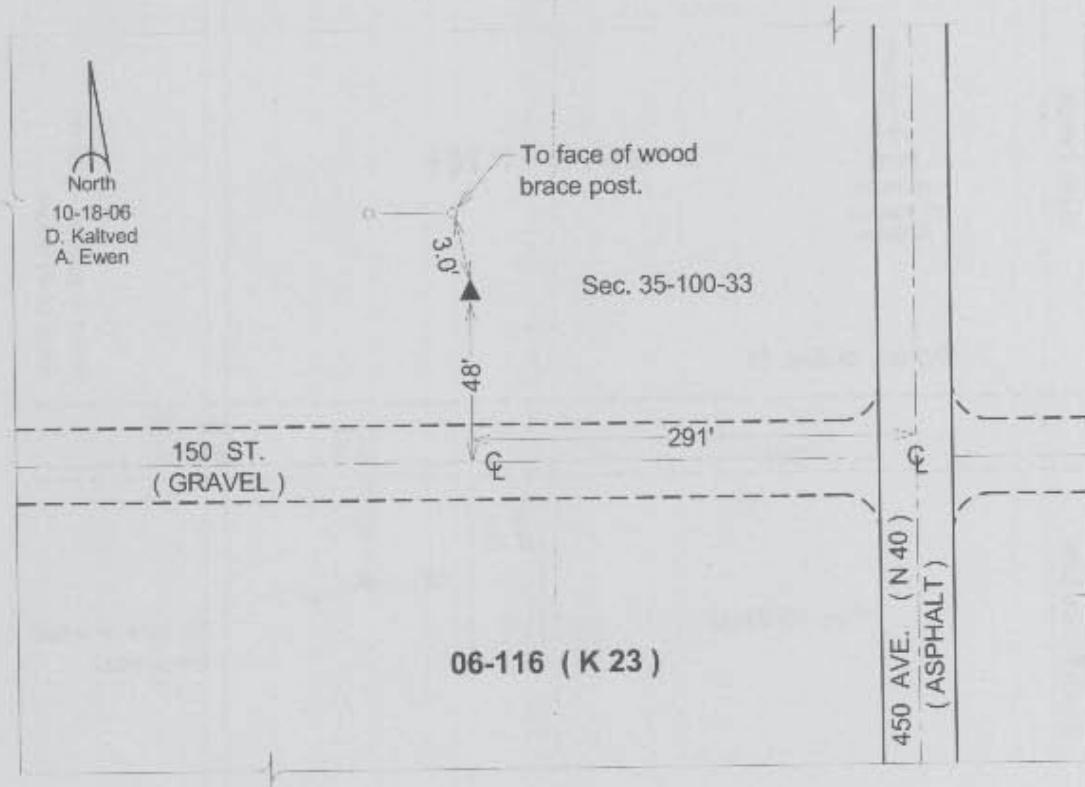
Latitude: **43°25'50.35068"N**

Longitude: **94°41'59.39405"W**

Mapping Angle: **-0°48'47"**

Combination Scale Factor: **0.99997612**

**Monument Type:** Berntsen Top Security Rod Monument with a 3-1/4" dia. domed survey cap and permanent magnet encased in a 5" dia. PVC pipe with a NGS style aluminum access cover.



*This document was prepared by DCI and GBC for use by Emmet County, Iowa.*