

**Emmet County, Iowa**  
 Iowa North Zone (1401)  
 Horiz. Datum: NAD83(1996)  
 Vert. Datum: NAVD 1988  
 US Survey Feet  
 2006

Point Name: **117**

**Designation:** 06-117 (R25) Emmet Co GPS Control Point

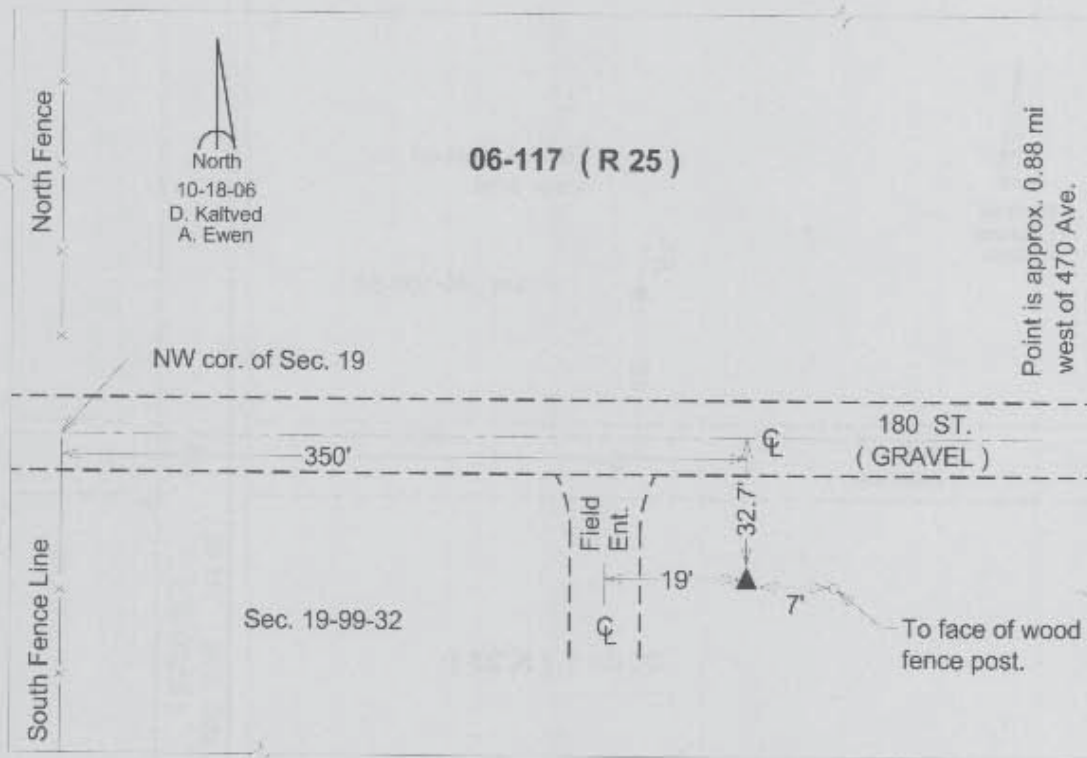
Northing: **3970015.26sft** Easting: **4608157.44sft**

Orthometric Height: **1289.79sft** Ellipsoid Height: **1196.76sft** **Geoid03**

Latitude: **43°23'06.30503"N** Longitude: **94°40'39.84017"W**

Mapping Angle: **-0°47'54"** Combination Scale Factor: **0.99996669**

**Monument Type:** Berntsen Top Security Rod Monument with a 3-1/4" dia. domed survey cap and permanent magnet encased in a 5" dia. PVC pipe with a NGS style aluminum access cover.



*This document was prepared by DCI and GBC for use by Emmet County, Iowa.*