

**Emmet County, Iowa**  
Iowa North Zone (1401)  
Horiz. Datum: NAD83(1996)  
Vert. Datum: NAVD 1988  
US Survey Feet  
2006

Point Name: 119

**Designation:** 06-119 (EE25) Emmet Co GPS Control Point

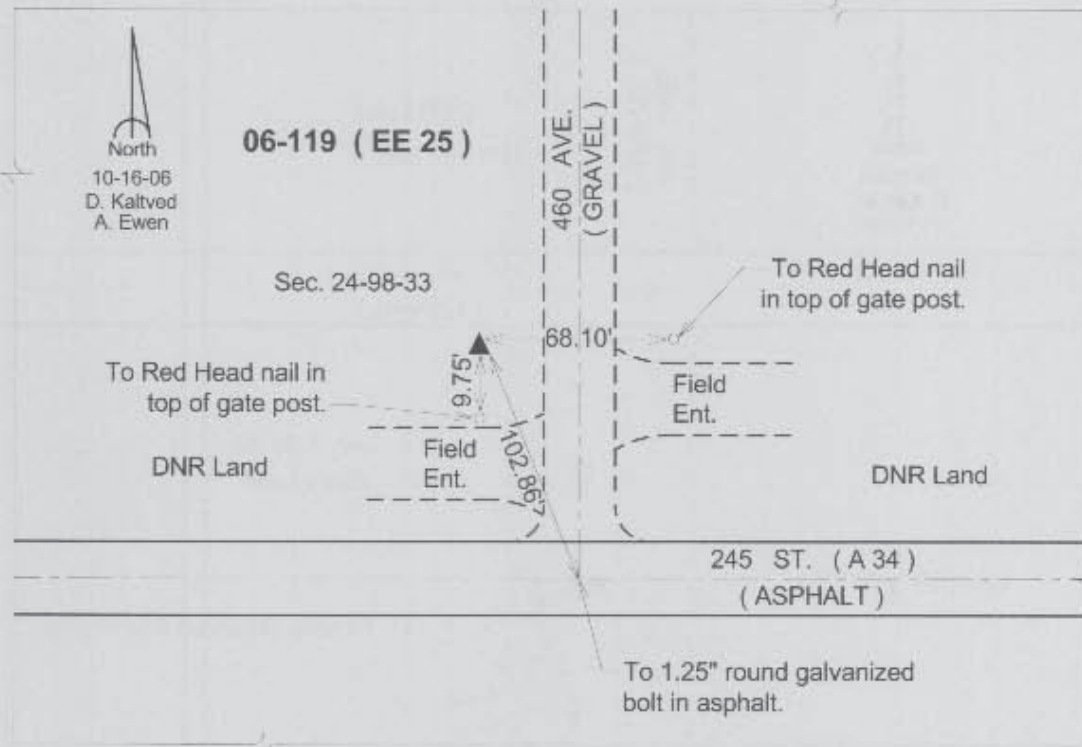
Northing: 3935971.09sft Easting: 4607436.57sft

Orthometric Height: 1288.98sft Ellipsoid Height: 1195.45sft **Geoid03**

Latitude: 43°17'30.00293"N Longitude: 94°40'43.17356"W

Mapping Angle: -0°47'56" Combination Scale Factor: 0.99994763

**Monument Type:** Berntsen Top Security Rod Monument with a 3-1/4" dia. domed survey cap and permanent magnet encased in a 5" dia. PVC pipe with a NGS style aluminum access cover.



*This document was prepared by DCI and GBC for use by Emmet County, Iowa.*