

Emmet County, Iowa  
Iowa North Zone (1401)  
Horiz. Datum: NAD83(1996)  
Vert. Datum: NAVD 1988  
US Survey Feet  
2006

Point Name: 120

Designation: 06-120 (A31) Emmet Co GPS Control Point

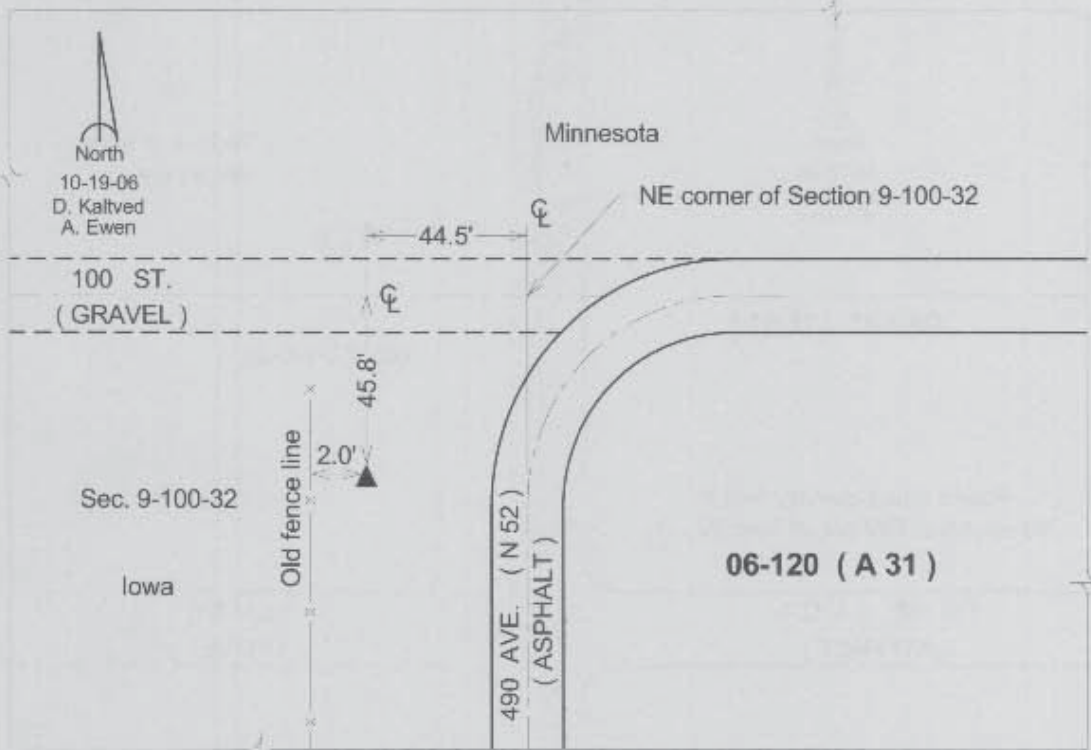
Northing: 4011888.36sft Easting: 4623851.03sft

Orthometric Height: 1244.71sft Ellipsoid Height: 1152.34sft Geoid03

Latitude: 43°30'01.91412"N Longitude: 94°37'14.86325"W

Mapping Angle: -0°45'35" Combination Scale Factor: 0.99999615

**Monument Type:** Berntsen Top Security Rod Monument with a 3-1/4" dia. domed survey cap and permanent magnet encased in a 5" dia. PVC pipe with a NGS style aluminum access cover.



This document was prepared by DCI and GBC for use by Emmet County, Iowa.