

Emmet County, Iowa
Iowa North Zone (1401)
Horiz. Datum: NAD83(1996)
Vert. Datum: NAVD 1988
US Survey Feet
2006

Point Name: 122

Designation: 06-122 (K31) Emmet Co GPS Control Point

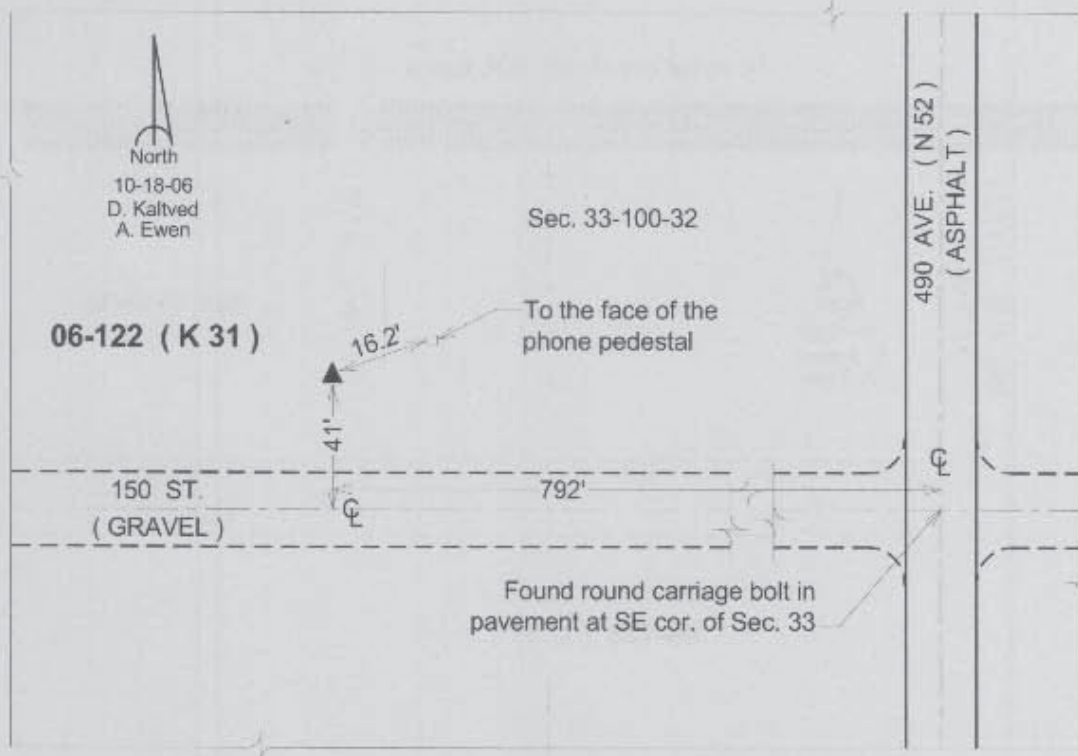
Northing: 3986424.81sft Easting: 4622854.73sft

Orthometric Height: 1272.89sft Ellipsoid Height: 1180.13sft Geoid03

Latitude: 43°25'50.32900"N Longitude: 94°37'23.78856"W

Mapping Angle: -0°45'41" Combination Scale Factor: 0.99997778

Monument Type: Berntsen Top Security Rod Monument with a 3-1/4" dia. domed survey cap and permanent magnet encased in a 5" dia. PVC pipe with a NGS style aluminum access cover.



This document was prepared by DCI and GBC for use by Emmet County, Iowa.