

Emmet County, Iowa
Iowa North Zone (1401)
Horiz. Datum: NAD83(1996)
Vert. Datum: NAVD 1988
US Survey Feet
2006

Point Name: 123

Designation: 06-123 (Q31) Emmet Co GPS Control Point

Northing: 3972471.44sft Easting: 4623614.68sft

Orthometric Height: 1272.52sft Ellipsoid Height: 1179.56sft Geoid03

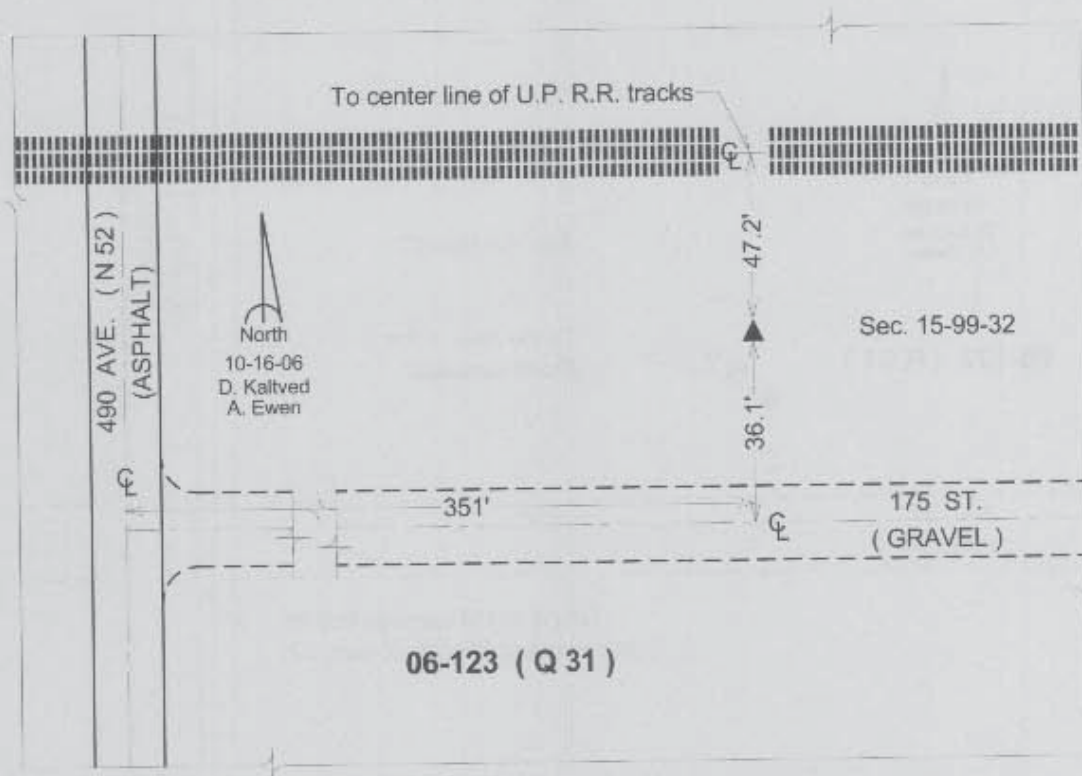
Latitude: 43°23'32.63489"N

Longitude: 94°37'10.98675"W

Mapping Angle: -0°45'32"

Combination Scale Factor: 0.99996912

Monument Type: Berntsen Top Security Rod Monument with a 3-1/4" dia. domed survey cap and permanent magnet encased in a 5" dia. PVC pipe with a NGS style aluminum access cover.



This document was prepared by DCI and GBC for use by Emmet County, Iowa.