

Emmet County, Iowa
 Iowa North Zone (1401)
 Horiz. Datum: NAD83(1996)
 Vert. Datum: NAVD 1988
 US Survey Feet
2006

Point Name: **125**

Designation: 06-125 (DD31) Emmet Co GPS Control Point

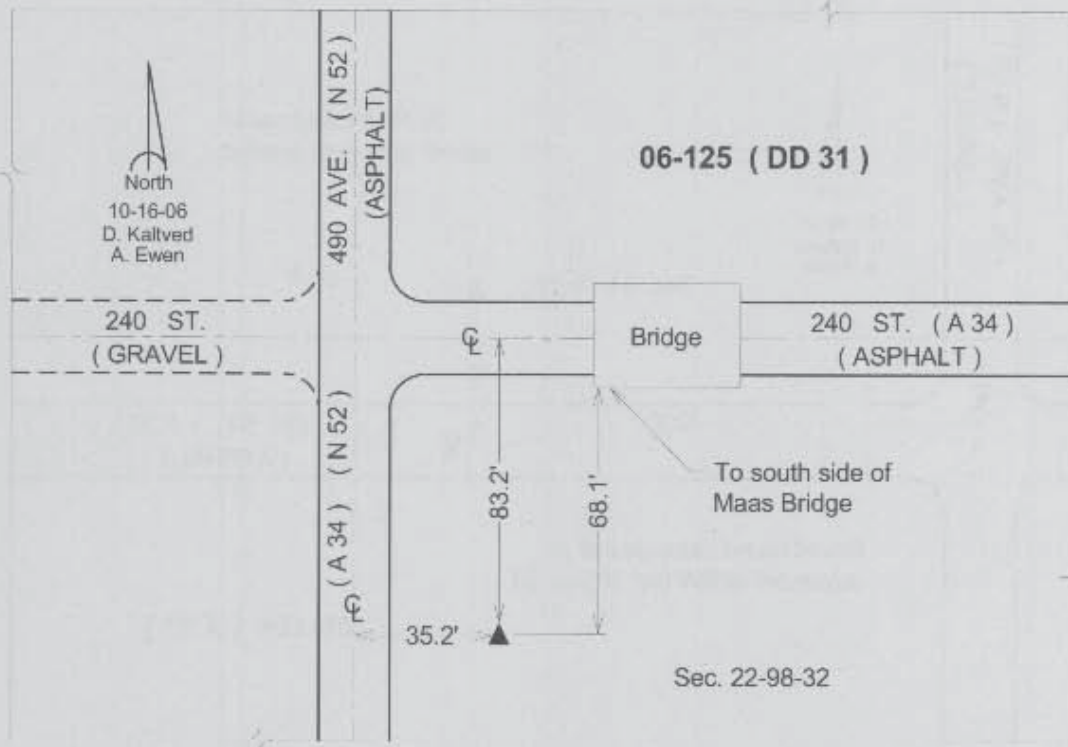
Northing: **3938206.90**sft Easting: **4623089.96**sft

Orthometric Height: **1258.24**sft Ellipsoid Height: **1164.82**sft **Geoid03**

Latitude: **43°17'54.18485"N** Longitude: **94°37'11.94483"W**

Mapping Angle: **-0°45'33"** Combination Scale Factor: **0.99995038**

Monument Type: Bernsten Top Security Rod Monument with a 3-1/4" dia. domed survey cap and permanent magnet encased in a 5" dia. PVC pipe with a NGS style aluminum access cover.



This document was prepared by DCI and GBC for use by Emmet County, Iowa.