

Emmet County, Iowa
Iowa North Zone (1401)
Horiz. Datum: NAD83(1996)
Vert. Datum: NAVD 1988
US Survey Feet
2006

Point Name: 126

Designation: 06-126 (A37) Emmet Co GPS Control Point

Northing: 4010903.26sft Easting: 4639694.80sft

Orthometric Height: 1250.83sft Ellipsoid Height: 1158.41sft Geoid03

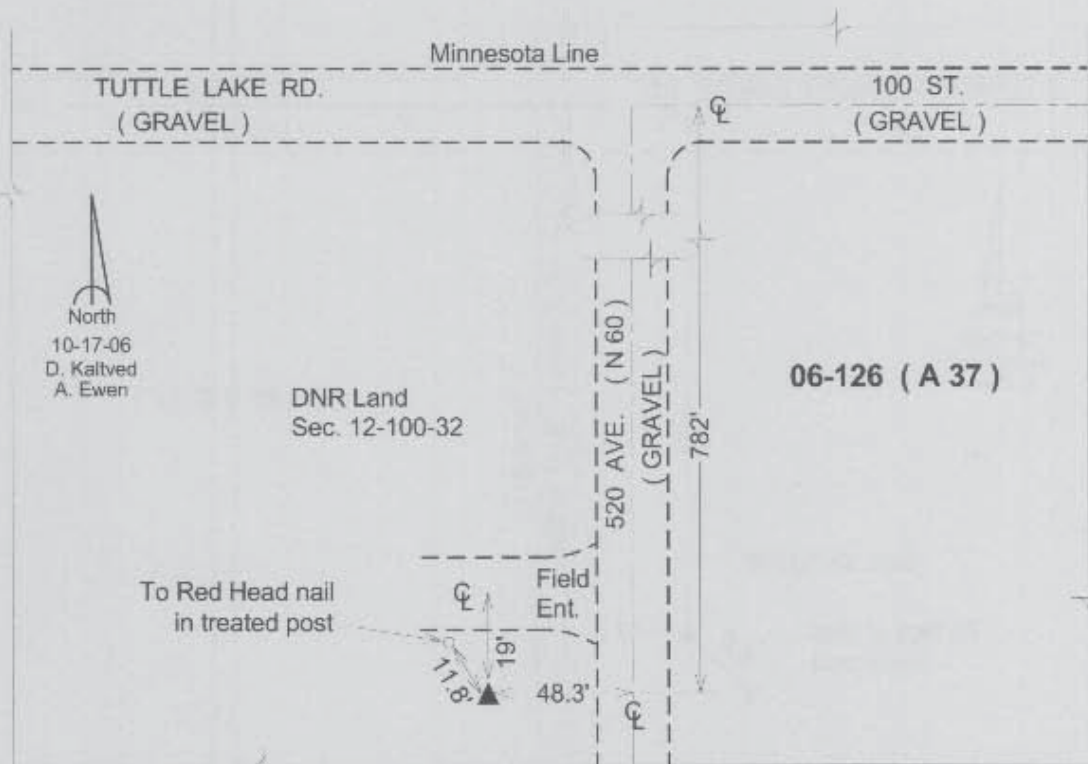
Latitude: 43°29'54.20539"N

Longitude: 94°33'39.76358"W

Mapping Angle: -0°43'09"

Combination Scale Factor: 0.99999531

Monument Type: Berntsen Top Security Rod Monument with a 3-1/4" dia. domed survey cap and permanent magnet encased in a 5" dia. PVC pipe with a NGS style aluminum access cover.



This document was prepared by DCI and GBC for use by Emmet County, Iowa.