

**Emmet County, Iowa**  
Iowa North Zone (1401)  
Horiz. Datum: NAD83(1996)  
Vert. Datum: NAVD 1988  
US Survey Feet  
**2006**

Point Name: **129**

**Designation:** 06-129 (R39) Emmet Co GPS Control Point

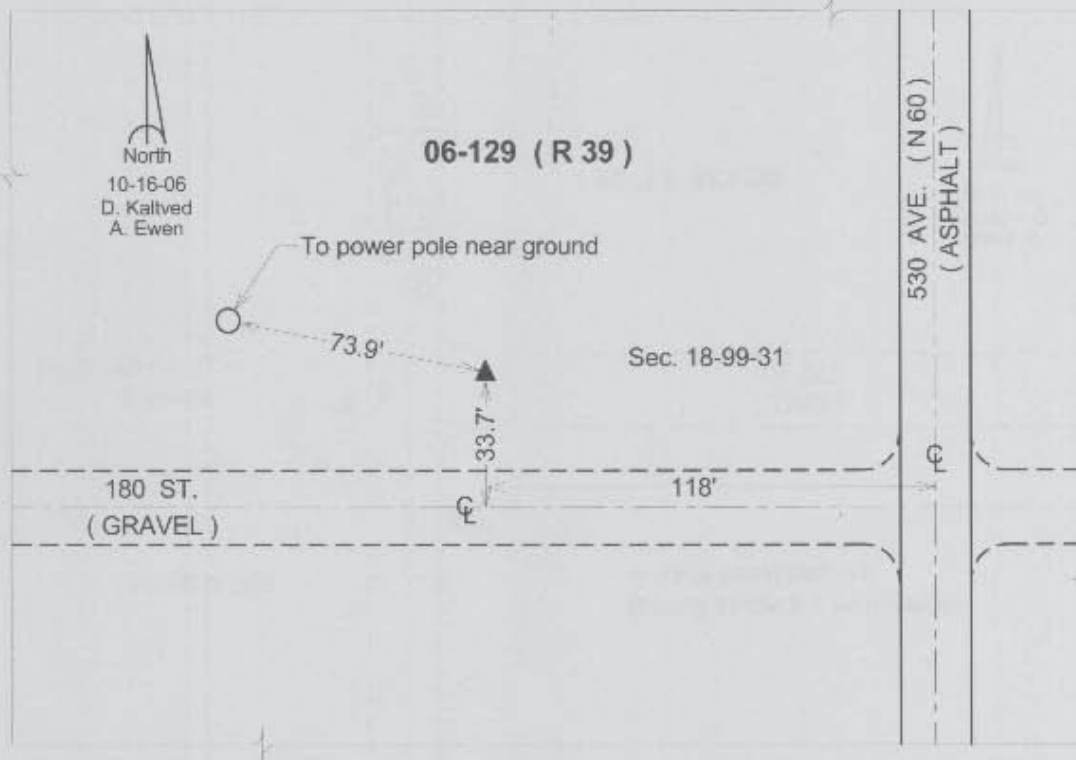
Northing: **3969740.71**sft Easting: **4644174.88**sft

Orthometric Height: **1273.23**sft Ellipsoid Height: **1180.23**sft **Geoid03**

Latitude: **43°23'08.26413"N** Longitude: **94°32'32.10553"W**

Mapping Angle: **-0°42'23"** Combination Scale Factor: **0.99996760**

**Monument Type:** Berntsen Top Security Rod Monument with a 3-1/4" dia. domed survey cap and permanent magnet encased in a 5" dia. PVC pipe with a NGS style aluminum access cover.



*This document was prepared by DCI and GBC for use by Emmet County, Iowa.*