

Emmet County, Iowa
 Iowa North Zone (1401)
 Horiz. Datum: NAD83(1996)
 Vert. Datum: NAVD 1988
 US Survey Feet
2006

Point Name: **130**

Designation: 06-130 (X37) Emmet Co GPS Control Point

Northing: **3953828.65sft** Easting: **4639609.13sft**

Orthometric Height: **1268.22sft** Ellipsoid Height: **1175.03sft** **Geoid03**

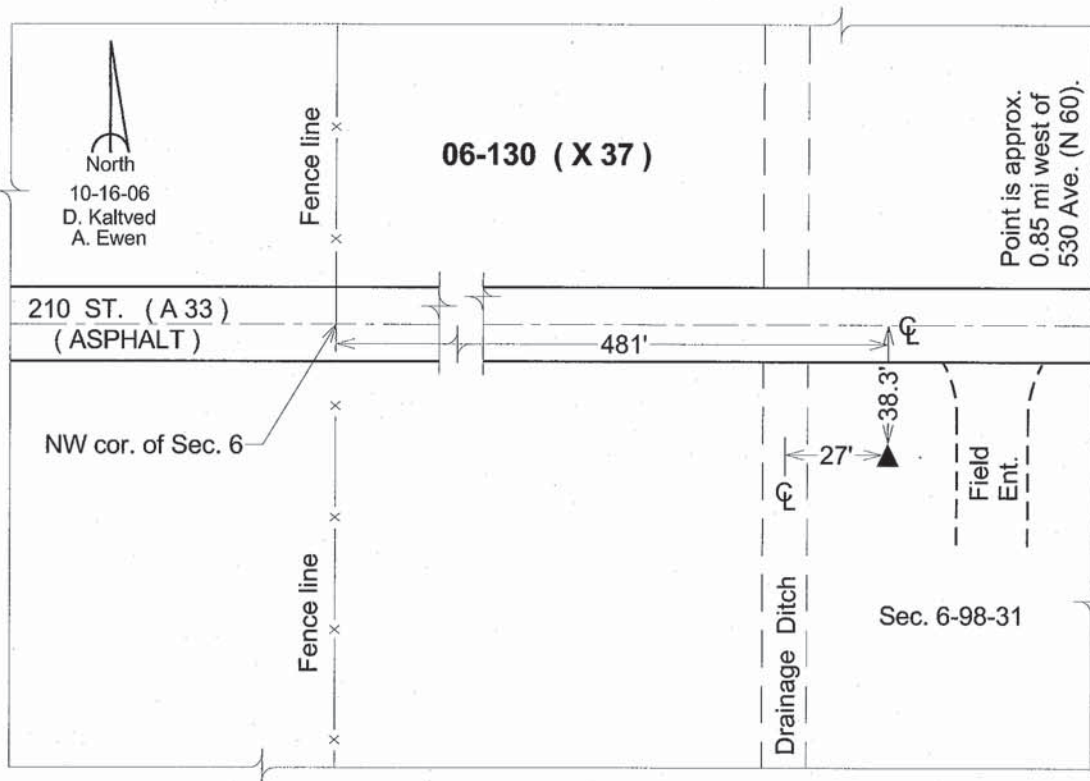
Latitude: **43°20'30.56283"N**

Longitude: **94°33'31.22952"W**

Mapping Angle: **-0°43'03"**

Combination Scale Factor: **0.99995854**

Monument Type: Berntsen Top Security Rod Monument with a 3-1/4" dia. domed survey cap and permanent magnet encased in a 5" dia. PVC pipe with a NGS style aluminum access cover.



This document was prepared by DCI and GBC for use by Emmet County, Iowa.