

Emmet County, Iowa
 Iowa North Zone (1401)
 Horiz. Datum: NAD83(1996)
 Vert. Datum: NAVD 1988
 US Survey Feet
2006

Point Name: **131**

Designation: 06-131 (DD37) Emmet Co GPS Control Point

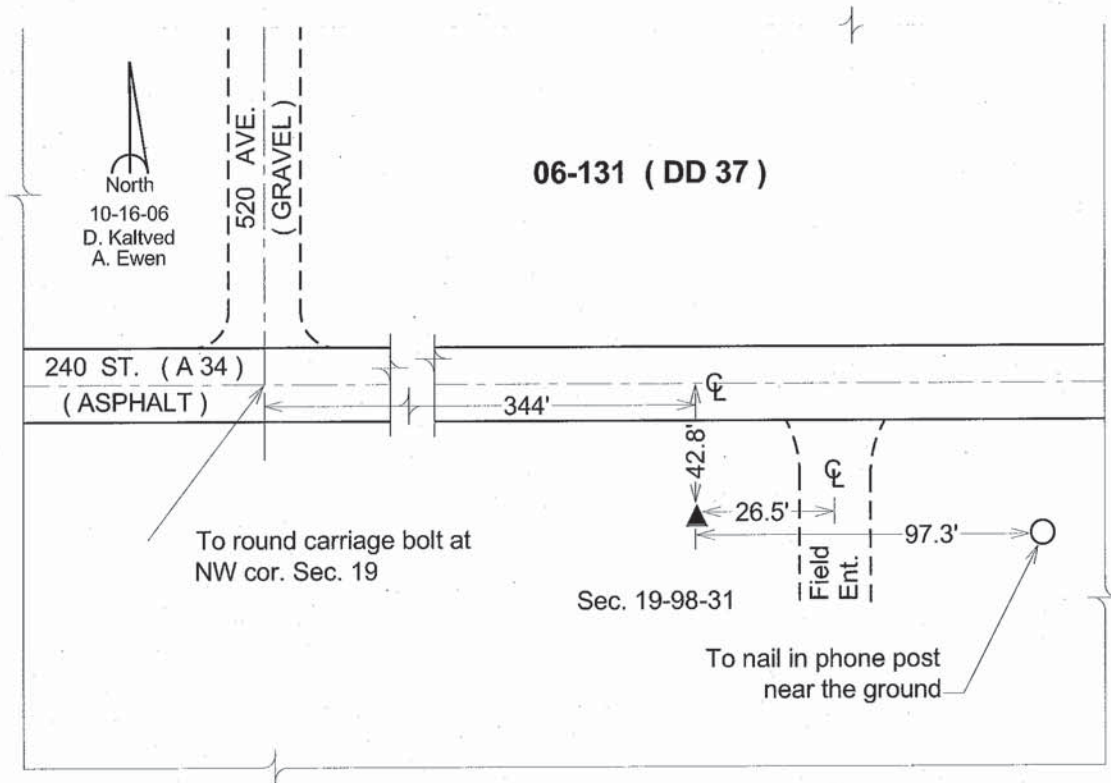
Northing: **3938060.66sft** Easting: **4639312.06sft**

Orthometric Height: **1279.86sft** Ellipsoid Height: **1186.51sft** **Geoid03**

Latitude: **43°17'54.80542"N** Longitude: **94°33'32.57628"W**

Mapping Angle: **-0°43'04"** Combination Scale Factor: **0.99994937**

Monument Type: Berntsen Top Security Rod Monument with a 3-1/4" dia. domed survey cap and permanent magnet encased in a 5" dia. PVC pipe with a NGS style aluminum access cover.



This document was prepared by DCI and GBC for use by Emmet County, Iowa.