

**Emmet County, Iowa**  
Iowa North Zone (1401)  
Horiz. Datum: NAD83(1996)  
Vert. Datum: NAVD 1988  
US Survey Feet  
**2006**

Point Name: **133**

**Designation:** 06-133 (E42) Emmet Co GPS Control Point

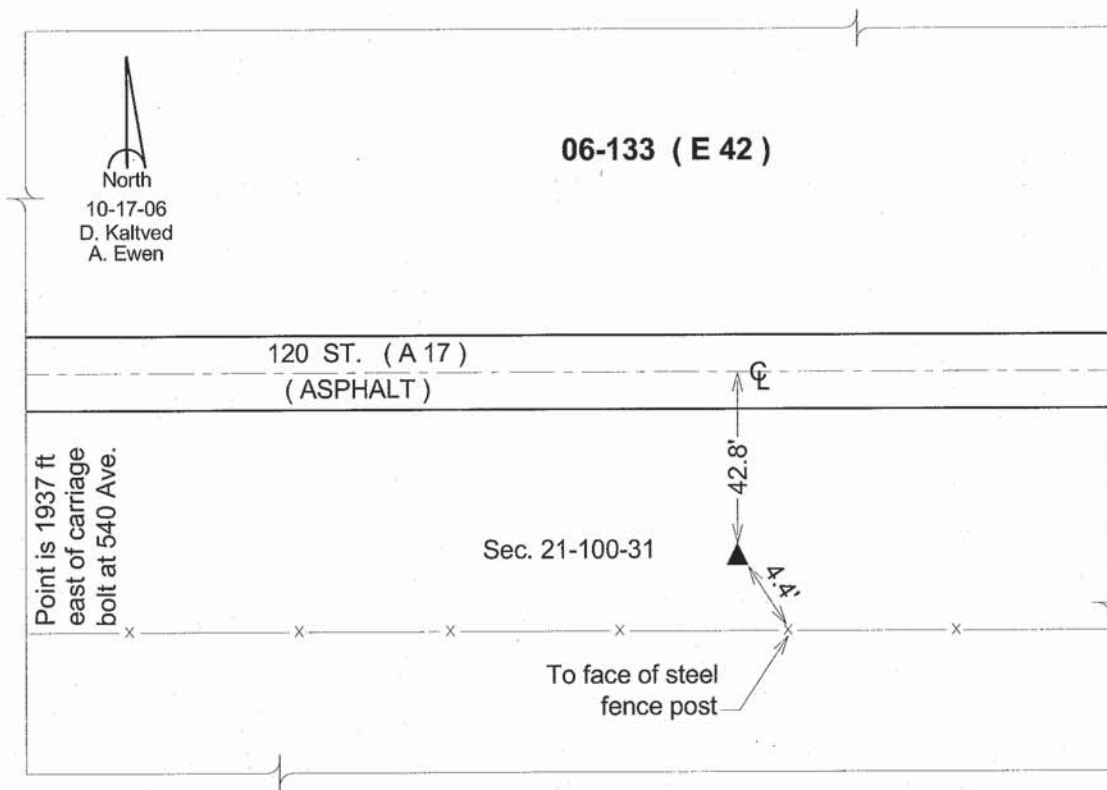
Northing: **4001865.28sft** Easting: **4651897.62sft**

Orthometric Height: **1260.72sft** Ellipsoid Height: **1168.13sft** **Geoid03**

Latitude: **43°28'26.43368"N** Longitude: **94°30'52.75670"W**

Mapping Angle: **-0°41'16"** Combination Scale Factor: **0.99998875**

**Monument Type:** Berntsen Top Security Rod Monument with a 3-1/4" dia. domed survey cap and permanent magnet encased in a 5" dia. PVC pipe with a NGS style aluminum access cover.



*This document was prepared by DCI and GBC for use by Emmet County, Iowa.*