

Emmet County, Iowa
 Iowa North Zone (1401)
 Horiz. Datum: NAD83(1996)
 Vert. Datum: NAVD 1988
 US Survey Feet
2006

Point Name: **136**

Designation: 06-136 (W43) Emmet Co GPS Control Point

Northing: **3956679.67sft** Easting: **4654632.63sft**

Orthometric Height: **1277.77sft** Ellipsoid Height: **1184.60sft** **Geoid03**

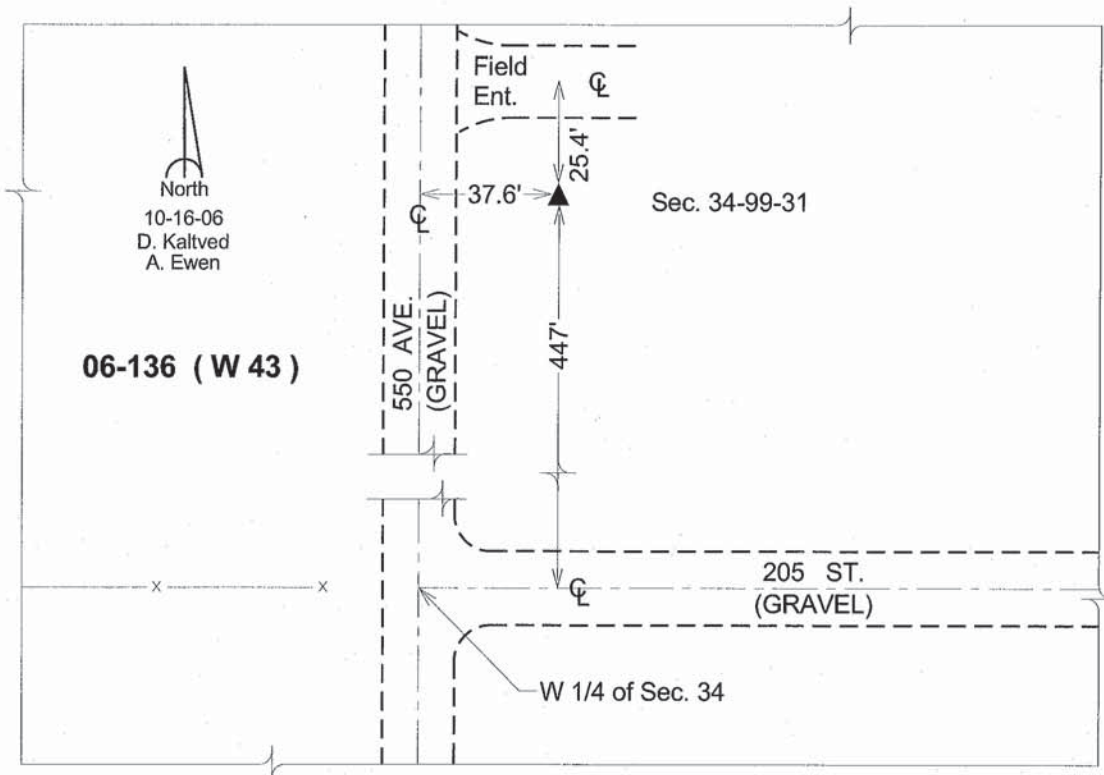
Latitude: **43°21'00.52720"N**

Longitude: **94°30'08.40501"W**

Mapping Angle: **-0°40'46"**

Combination Scale Factor: **0.99995980**

Monument Type: Berntsen Top Security Rod Monument with a 3-1/4" dia. domed survey cap and permanent magnet encased in a 5" dia. PVC pipe with a NGS style aluminum access cover.



This document was prepared by DCI and GBC for use by Emmet County, Iowa.